

"JEWELS, PRECIOUS JEWELS."

The Jewelry Establishment of H. Hansen.

One of the Largest Diamond, Gold and Jewel Depots in the Mountains.

Where is the man, woman or child in the savage, half-civilized or civilized state that is not fond of personal adornment? The savage belle who rules the hearts of her admirers with her graces and feminine charms, binds the lands of silver around her ankles and wrists to brighten her beauty, as well as the drawing room queen, who with diamond earrings and articles of gold around her fingers, are fully cognizant of the fact that beauty adorned in jewels and fine raiment, increases in splendor and loveliness the personal appearance of the happy possessor.

Poets and historians have written in vivid strains elaborate descriptions of jewels composing the diadems of queens, and who so unfamiliar with

Taking this business of Hansen's in its entirety, it is one of the largest and most complete jewelry establishments between Cheyenne and Ogden.

THE UNION PACIFIC.

The Great Continental Highway and Overland Route.

This great national highway is so well known, not only throughout the United States, but all over the world, that a mere reference to it would seem sufficient, yet for the benefit of those who have never had the pleasure of riding over its smooth track, and thus had an opportunity of gazing upon the fine scenery along its route, the following description is given, especially of that portion which passes through Wyoming.

CHEYENNE.

Cheyenne, 6,038 feet in altitude, with a population of about 10,000, is one of the sprightliest and most prosperous cities in the entire west. It is well and compactly built, and for many years has been the center of the cattle industry of the northwest. Cheyenne

1,074 miles distant from Kansas City and 847 miles distant from Council Bluffs. Green River is end of a division, and has a population of about 1,000.

There are many objects of interest in and around Green River, among which are the peculiar clay buttes, by which it is surrounded.

ACROSS THE CONTINENT TO SAN FRANCISCO.

From Green River, the trip across the continent to San Francisco is continued. Three miles from Green River is Fish Cut. Green River buttes are objects of interest, and are within sight for miles. After passing Granger, Evanston, the last town of importance in Wyoming territory, with a population of 2,000 is soon reached. At Wabash station, the summit of the Wahsatch range of mountains is reached. The elevation is 6,812 feet, and at this point the road enters Echo canon. Echo creek, which runs through the canon, is crossed thirty-one times in twenty-six miles. Three and a half miles west of Wabash, the train runs into a tunnel 900 feet long. One mile east of Castle Rock is a queer formation of rock resembling the ruins of an old castle. Hanging rock is what its name indicates. Two and a half miles west of Emory, on the top of the bluffs is a rock called Jack in the Pulpit, and further on can be seen the heights of Echo canon, on top of which are the old Mormon fortifications. Then comes Steamboat Rocks. Just before reaching Echo are seen the Amphitheatre, Pulpit Rocks and Bromley's Cathedral. At Echo station Weber canon is entered. One half mile west of Echo can be seen the Witch Rocks. Five miles farther on is the 1,000 mile tree, and a mile farther on is Devil's Slide. Echo and Weber canons compare favorably with the celebrated Colorado canons. Three and a half miles west of Croysden, the canon broadens out and to the left are noticed the first of the Mormon settlements. About half a mile away, between Peterson and Uintah station, Devil's Gate is to be seen, and shortly after the country widens into the Great Salt Lake valley when Ogden is reached.

WANT STATEHOOD.

Cheyenne Board of Trade Adopts the Following Resolutions:

WHEREAS, there has been before congress a bill entitled "a bill to provide for the formation and admission into the Union of the state of Wyoming and for other purposes;" and

WHEREAS, this measure is recognized and acknowledged as one of vital importance to the people of Wyoming; that it will have an important influence in the future and will materially affect the political, industrial and financial affairs of this commonwealth; and

WHEREAS, it is not only meet and proper, but it is the duty of every citizen to express his sentiments and opinions on all matters of public importance; and

WHEREAS, the present organization as a territory is but a temporary government provided by the congress of the United States, and intended only to endure until such time as the people could prepare for the erection of a state;

Therefore be it resolved, that it is the sense of the board of trade of the city of Cheyenne, that Wyoming is at the present time fully qualified to assume the duties and responsibilities of statehood; that her people are willing and abundantly able to assume all additional expense entailed thereby and will maintain the splendid financial reputation already established.

Resolved, that the people of the territory be urged to express their views on this question, and that mass meetings be called in every county of the territory for that purpose.

Resolved that a copy of these resolutions be forwarded to the governor of this territory and to the delegate to congress, and that copies be furnished to the press of the territory.

Magnetic Hill.

There is a magnetic hill on the mail road between Rawlins and Lander. It is known as Beaver Hill and those who have traveled over it have felt the effect of a strong electric current. It is the most noticeable when a storm is threatening and the clouds are hanging low and at such times the telegraph wire over the hill becomes grounded and it is impossible to use it for hours. Ordinarily, however, in spite of the strong current, the wire is not interfered with. The hill is believed to be highly magnetic. People traveling over it in cloudy weather notice that in rapidly brushing a horse or a buffalo robe when about three-fourths up the hill, every hair seems to emit a spark of electricity, while a short way over the hill the current does not seem to exist to any perceptible degree.—Boomerang.

The Denver Pipe Line Company.

Referring to the newly organized Wyoming and Denver Pipe Line company, the Journal of Oil and Gas says: Should they find a supply of natural gas, and this is probable, that will also be piped to Denver and other places.

The Wyoming oil line will be laid by way of Rock creek, Laramie and Fort Collins, with pumping stations at Casper and Fort Collins. It is understood that the Standard Oil company finds its Chicago line profitable, selling oil in that city for 53 cents which costs them but 25 cents per barrel. This Denver company will prepare to start in with a capacity for pumping 5,000 barrels per day. The capital stock of this company is \$800,000, and the limit \$5,000,000.

—Subscribe for the CARBON COUNTY JOURNAL and keep posted in regard to the progress of Wyoming. Terms \$3 per year.

—Rawlins is the end of a division on the Union Pacific. At this place are located large machine shops and round houses, also a car shop where disabled cars are repaired. These shops employ a force of over two hundred men.

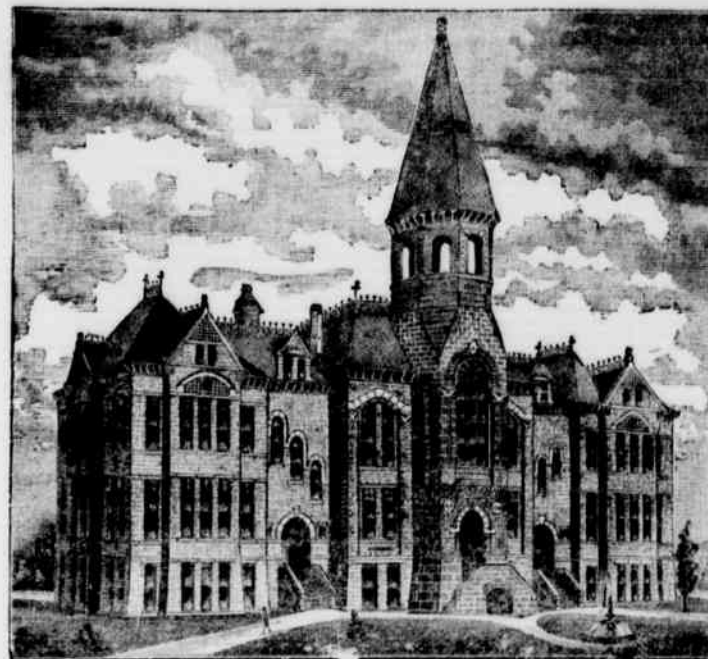
STONE QUARRIES

Of Murray & McPherson—The Finest Building Stone in the West.

Dimensions of the Quarry—The Size of Single Block Stone.

On the first day of September, A. D. 1887, Robert Murray and James McPherson opened the Murray & McPherson stone quarry, which is situated four miles southeast of Rawlins, and exposed one of the finest bodies of building stone to be found in any quarry west of the Mississippi river.

DIMENSIONS OF THE QUARRY. The amount of rock exposed, without on ounce of dirt covering it, is fifteen hundred feet in length, one hundred feet in width and twenty feet in height. Underneath this exposed ledge there is another strata from sixty to seventy five feet in depth and of the same length and of greater width than the top layer. Huge



TERRITORIAL UNIVERSITY AT LARAMIE.

seams running from twenty to one hundred feet in length split the immense masses of rock into blocks of varying dimensions, many of them being thirty to fifty feet square.

One of these gigantic blocks nearly square in shape contains 30,000 cubic feet and is as pretty hewn by the hand of nature as if done by a sculptor's chisel. This rock alone contains more cubic feet of stone than was used in constructing the Rawlins court house and district school house combined.

COLOR AND DURABILITY.

The stone in this quarry is a light grayish color, being sandstone in formation, and one remarkable quality it possesses over stone from other quarries, is that the ledge which has been exposed and beaten upon by the inclemencies of the weather and climate for hundreds of years, is as firm and hard and durable as if it had lain concealed in the bowels of the earth from creations dawn.

EMPLOYEES.

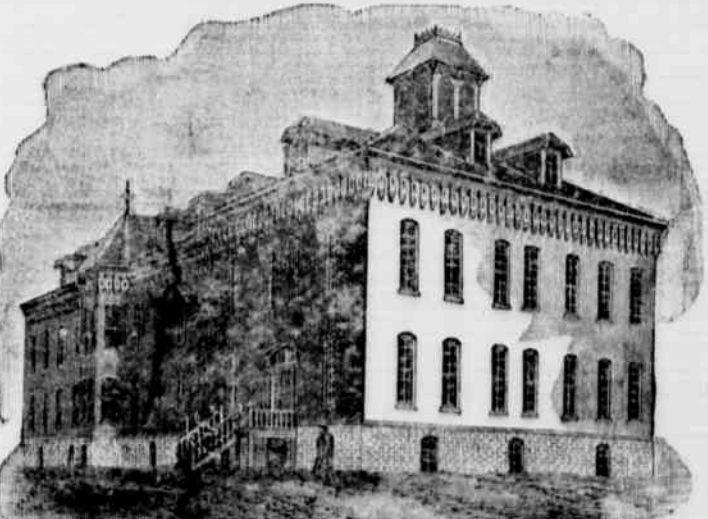
Eight men are constantly employed in the quarry and since its opening 120,000 cubic feet of stone or nearly 600 carloads have been shipped to various parts of the United States.

NUMBER OF ACRES.

The quarry comprises forty acres or two of the smallest subdivisions of government land. This has been regularly entered under the provisions of law enacted by congress and good title is vested in Mr. Murray & McPherson. On approaching the quarry from the north a mural escarpment 1500 feet in length stands out from the hills and a wagon trail leads directly to where the huge blocks are quarried and a gigantic derrick capable of lifting immense weight raises the quarried blocks from their long resting place and deposits them upon wagons standing ready to receive their loads.

EASILY PROCURED.

Owing to the ledge being so fully exposed,



TERRITORIAL INSANE ASYLUM AT EVANSTON.

posed, and free from any covering of soil, the usual labor required in many quarries of handling soil and small blocks of stone unutilized for commercial purposes, is entirely obviated here. The manner of getting out the rock is as follows:

THE BREAST OF STONE

is fully twenty feet high. A line of the required length is cut by picks along the front of the rock and on top of the depth of one or two inches of the required dimensions. Into this line iron wedges are gradually driven two or three inches, when the rock splits with remarkable precision into the required size. About twenty cubic feet per day are torn from the ledges and hauled to the Union Pacific railway.

WHERE USED.

This rock is used in the construction of the capitol building at Cheyenne, and Messrs. Murray & McPherson have a contract calling for 10,000 cubic feet to be used in the completion of that

structure. The university building at Laramie is trimmed with this stone, and its beauty and durability can be fully vouched for by any of the residents of that handsome city. The penitentiary at Rawlins is being constructed of this rock, and the part under process of construction attests its beauty and strength.

SUSTAINING CAPACITY.

An analysis of the strength and composition of this rock has been made, and it was found that it would readily sustain the enormous pressure of 16,000 pounds to the square inch.

Many carloads are shipped to Nebraska and Colorado and some of the finest buildings in Denver are made of this material.

ITS ONLY RIVAL.

The Berrea stone quarries of Ohio, are the only ones west of the Alleghenies that can compete in hardness, durability and fineness of color and grain with this quarry of Murray & McPherson's.

These quarries are the only ones that have been developed that are similar in the character of stone, while the Rawlins quarry can supply blocks

S. McMillen,

—WHOLESALE AND RETAIL—

GROECR

Postoffice Block, - - Rawlins, Wyo.

New Invoice Choice Fruits and Candies Just Received.

JOHN C. DYER,

—WHOLESALE AND RETAIL—

WINE, LIQUORS and CIGARS.

—AGENT FOR—

Phil. Best's Beer and Old Forrester Whisky.

North Front Street, Rawlins, Wyoming.

JUNQUIST & HOCKER,

Rawlins, Wyoming

AGENTS FOR THE

McCormick Mower, Cooper Wagon

GRAND DETOUR PLOW AND IOWA BARB WIRE.



AND DEALERS IN

Hardware, Stoves, Tinware,

GUNS AND AMMUNITION,

CUTLERY, IRON, HORSE SHOES AND NAILS.

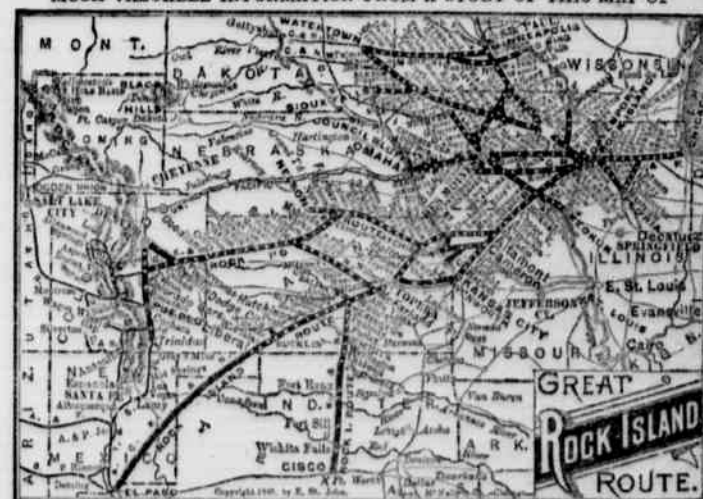
—ALSO A FULL LINE OF—

CROCKERY, GLASSWARE AND LAMPS.

Persons from the country needing anything in our line will find it to their advantage to write or call upon us before making purchases.

A MAN

UNACQUAINTED WITH THE GEOGRAPHY OF THE COUNTRY, WILL OBTAIN MUCH VALUABLE INFORMATION FROM A STUDY OF THIS MAP OF



THE GREAT ROCK ISLAND ROUTE.

(Chicago, Rock Island & Pacific and Chicago, Kansas & Nebraska Rys.)

Its main lines, branches and extensions west, northwest and southwest include Chicago, Joliet, Ottawa, Peoria, La Salle, Moline, Rock Island in ILLINOIS—Davenport, Muscatine, Ottumwa, Keokuk, West Liberty, Iowa City, Des Moines, Knoxville, Winterset, Atlantic, Audubon, Harlan, Guthrie Centre, and Council Bluffs in IOWA—Minneapolis and St. Paul in MINNESOTA—Watertown and Sioux Falls in S. DAKOTA—Gallatin, Tranton, Cameron, St. Joseph, and Kansas City in MISSOURI—Beatrice, Fairbury, and Nelso in NEBRASKA—Horton, Topeka, Hutchinson, Wichita, Belleville, Norton, Abilene, Caldwell, in KANSAS—Colorado Springs, Denver, Pueblo, in COLORADO. Traverses now and vast areas of rich farming and grazing lands, affording the best facilities of intercommunication to older States and to all towns and cities in Southern Nebraska, Kansas, Colorado, Utah, New Mexico, Indian Territory, Texas, Arizona, Idaho, California, and Pacific coast and trans-oceanic seaports.

SOLID FAST VESTIBULE EXPRESS TRAINS

Of Palace Coaches—leading all competitors in splendor of equipment and luxury of accommodations—run through daily between Chicago and Colorado Springs, Denver and Pueblo. Similar MAGNIFICENT VESTIBULE TRAIN SERVICE daily between Chicago and Council Bluffs (Omaha), and between Chicago and Kansas City. Elegant Day Coaches, Dining Cars, Reclining Chair Cars (FREE), and Palace Sleeping Cars. California Excursions daily. Choice of routes to and from Salt Lake City, Portland, Los Angeles, San Diego, San Francisco, and intervening localities. Quick time, prompt connections and transfers in Union Depots.

THE FAMOUS ALBERT LEA ROUTE

Runs superbly equipped Express Trains daily each way between Chicago, Rock Island, Atchison, St. Joseph, Leavenworth, Kansas City and Minneapolis and St. Paul. The favorite Tourist Line to the scenic resorts, and hunting and fishing grounds of the Northwest. Its Watertown Branch courses through the most productive lands of Northern Iowa, Southwestern Minnesota, and West Southern Dakota.

THE SHORT LINE VIA SENECA AND KANKAKEE offers facilities to travel between Cincinnati, Indianapolis, Lafayette, and Council Bluffs, St. Joseph, Atchison, Leavenworth, Kansas City, Minneapolis, and St. Paul.

For Tickets, Maps, Folders, or desired information, apply to any Coupon Ticket Office in the United States or Canada, or address:

E. ST. JOHN, General Manager. CHICAGO, ILL. E. A. HOLBROOK, Gen'l Ticket & Pass Agent.

FINE JOB PRINTING.

The - Journal - Job - Department

Is the Largest and Most Complete

in the Territory

Do You Want First-Class Work

At Reasonable Rates? If so, give us a call.

We Guarantee Satisfaction.