

Appendix F : Historic Photographs

INTRODUCTION

In April 2013, the Project Design Team led by **HDR Architecture**, in association with **Preservation Design Partnership, LLC** and **Plan One / Architects**, began exploring the evolution of the Wyoming State Capitol from 1888 to present.

With the help of the **State of Wyoming Department of Administration and Information Division of Construction Management [AICM]** and the **Wyoming State Archives**, the Design Team was able to obtain a number of archival photographs illustrating that evolving state of the Capitol exterior and interior throughout the building’s lifetime. The historic photographs, included as part of *Appendix F*, are organized in approximate chronological order and by collection.

The chronological organization of the historic photographs illustrates the building evolution over time, including the major building campaigns and more subtle changes to the building. These changes include:

- The presence of a wrought iron fence along the perimeter of the Capitol site
- The configuration of the historic wood windows
- The historic extent of gilding at the Capitol dome

Performed in conjunction with parallel research of historic drawings, this information begins to tell the story of the building’s appearance and organization. How the Capitol changed over time, both architecturally and programmatically, is also evident. Analysis of the drawings and photographs contributed to our understanding of the building today, and how it has changed over time.



Figure F0-1. Wyoming State Capitol from the West, Ca. 1900.





THIS PAGE INTENTIONALLY LEFT BLANK



- Figure F1-1** Unknown. “Wyoming Capitol.” Photograph. Ca. 1888. Wyoming State Archives. 18 Dec. 2012.
- Figure F1-2** Unknown. “Phase I Postcard.” Postcard. Ca. 1888. Wyoming State Archives. 12 Dec 2012.
- Figure F1-3** Unknown. “Wyoming Capitol Phase II Construction.” Photograph. Ca. 1889. Wyoming State Archives. 18 Dec 2012.



Figure F1-1



Figure F1-2



Figure F1-3

- Figure F1-4** Unknown. “Phase II Construction Photograph.” Photograph. Ca. 1889. Wyoming State Archives. 12 Dec 2012.
- Figure F1-5** Unknown. “Wyoming Capitol Phase II Construction.” Photograph. Ca. 1889. Wyoming State Archives. 18 Dec 2012.
- Figure F1-6** Unknown. “Phase II Postcard.” Postcard. Ca. 1896. Wyoming State Archives. 12 Dec 2012.



Figure F1-4



Figure F1-5



Figure F1-6

- Figure F1-7** Unknown. “Wyoming Capitol.” Photograph. Ca. 1896. Wyoming State Archives. 18 Dec 2012.
- Figure F1-8** Unknown. “Wyoming Capitol from West.” Photograph. Ca. 1900. Wyoming State Archives. 20 Nov 2012.
- Figure F1-9** Unknown. “Capitol Building.” Photograph. Ca. 1900. Wyoming State Archives. 12 Dec 2012.



Figure F1-7



Figure F1-8



Figure F1-9

Wyoming State Archives, Exterior



Figure F1-10



Figure F1-11



Figure F1-12

Figure F1-10 Unknown. “Capitol Building.” Photograph. Ca. 1900. Wyoming State Archives. 12 Dec 2012.

Figure F1-11 Unknown. “Wyoming Capitol from South.” Photograph. Ca. 1903. Wyoming State Archives. 18 Dec 2012.

Figure F1-12 Unknown. “Nebraska State House, Lincoln, Nebraska.” Photograph. Ca. 1905. Wyoming State Archives. 20 Nov 2012.



Figure F1-13



Figure F1-14



Figure F1-15

Figure F1-13 Stimson, J.L. “United States Capitol.” Photograph. Ca. 1906. Wyoming State Archives. 20 Nov 2012.

Figure F1-14 Unknown. “Wyoming Capitol Cheyenne.” Photograph. Ca. 1908. Wyoming State Archives. 20 Nov 2012.

Figure F1-15 Unknown. “Capitol Building.” Photograph. Ca. 1908. Wyoming State Archives. 12 Dec 2012.



Figure F1-16



Figure F1-17



Figure F1-18

Figure F1-16 Unknown. “Capitol Building in Snow.” Photograph. Ca. 1908. Wyoming State Archives. 9 May 2013.

Figure F1-17 Unknown. “Sherman Company Painting Capitol Building.” Photograph. Ca. 1915-1916. Wyoming State Archives. 9 May 2013.

Figure F1-18 Unknown. “Wyoming Capitol from Southeast.” Photograph. Ca. 1918. Wyoming State Archives. 20 Nov 2012.



Figure F1-19 Unknown. “Wyoming Capitol from Southeast.” Photograph. Ca. 1918. Wyoming State Archives. 20 Nov 2012.

Figure F1-20 Unknown. “Wyoming Capitol.” Photograph. Ca. 1918. Wyoming State Archives. 20 Nov 2012.

Figure F1-21 Unknown. “Phase III Postcard.” Postcard. Ca. 1920. Wyoming State Archives. 12 Dec 2012.



Figure F1-19



Figure F1-20



Figure F1-21

Figure F1-22 Unknown. “Wyoming Capitol from Southwest.” Photograph. Ca. 1930. Wyoming State Archives. 20 Nov 2012.

Figure F1-23 Unknown. “Wyoming Capitol.” Postcard. Ca. 1930. Wyoming State Archives. 20 Nov 2012.

Figure F1-24 Unknown. “Wyoming Capitol.” Photograph. Ca. 1930. Wyoming State Archives. 12 Dec 2012.



Figure F1-22



Figure F1-23



Figure F1-24

Figure F1-25 Unknown. “State Capitol Cheyenne, Wyoming.” Photograph. Ca. 1930. Wyoming State Archives. 12 Dec 2012.

Figure F1-26 Unknown. “Wyoming Capitol from Southeast.” Photograph. Ca. 1930. Wyoming State Archives. 15 Oct 2013.

Figure F1-27 Unknown. “Wyoming Capitol from South.” Photograph. Ca. 1932. Wyoming State Archives. 20 Nov 2012.



Figure F1-25



Figure F1-26



Figure F1-27

Wyoming State Archives, Exterior



Figure F1-28



Figure F1-29



Figure F1-30

Figure F1-28

Unknown. “Capitol Complex.” Photograph. Ca. 1937. Wyoming State Archives. 20 Nov 2012.

Figure F1-29

Unknown. “Wyoming Capitol from West.” Photograph. Ca. 1938. Wyoming State Archives. 20 Nov 2012.

Figure F1-30

Unknown. “Wyoming Capitol from Southeast.” Photograph. Ca. 1948. Wyoming State Archives. 20 Nov 2012.

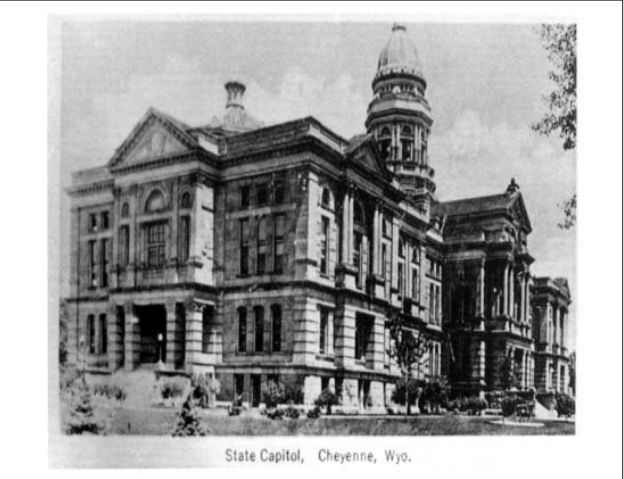


Figure F1-31



Figure F1-32



Figure F1-33

Figure F1-31

Unknown. “Wyoming Capitol Building.” Photograph. Ca. 1950. Wyoming State Archives. 12 Dec 2012.

Figure F1-32

Unknown. “Capitol from Southeast.” Photograph. Ca. 1960. Wyoming State Archives. 20 Nov 2012.

Figure F1-33

Unknown. “Wyoming Capitol Building.” Photograph. Ca. 1976. Wyoming State Archives. 12 Dec 2012.



Figure F1-34



Figure F1-35

Figure F1-34

Unknown. “Capitol at Night.” Photograph. Ca. 1976. Wyoming State Archives. 12 Dec 2012.

Figure F1-35

Unknown. “Wyoming Capitol.” Photograph. Ca. 1985. Wyoming State Archives. 20 Nov 2012.



Figure F2-1 Brammar. “Gov Warren Funeral.” Photograph. Ca. 1929. Wyoming State Archives. 9 May 2013.

Figure F2-2 Brammar. “Gov Warren Funeral Rotunda.” Photograph. Ca. 1929. Wyoming State Archives. 9 May 2013.

Figure F2-3 Brammar. “Governor Simpson with Gun.” Photograph. Ca. 1955-1959. Wyoming State Archives. 9 May 2013.



Figure F2-1

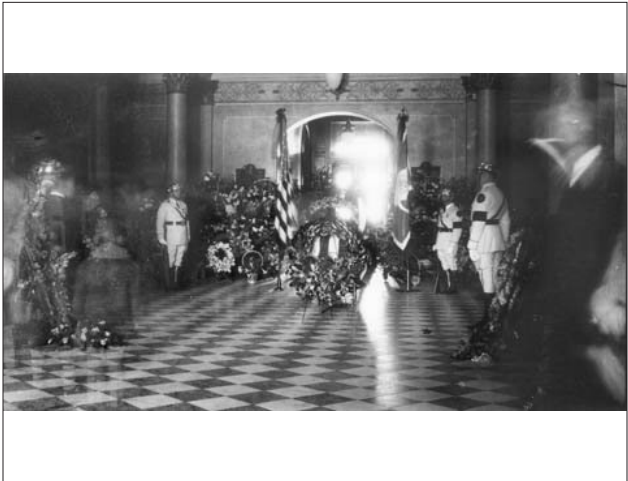


Figure F2-2



Figure F2-3

Figure F2-4 Brammar. “Very Long Document in House Chamber.” Photograph. Ca. 1961. Wyoming State Archives. 11 Sept 2013.

Figure F2-5 Brammar. “Very Long Document in House Chamber, 2.” Photograph. Ca. 1961. Wyoming State Archives. 11 Sept 2013.

Figure F2-6 Brammar. “Governor Gage in Leg Chamber.” Photograph. Ca. 1961-1963. Wyoming State Archives. 11 Sept 2013.



Figure F2-4



Figure F2-5



Figure F2-6

Figure F2-7 Brammar. “Governor Gage in Leg Chamber, 2.” Photograph. Ca. 1961-1963. Wyoming State Archives. 11 Sept 2013.

Figure F2-8 Brammar. “Governor Gage in Leg Chamber, 3.” Photograph. Ca. 1961-1963. Wyoming State Archives. 11 Sept 2013.

Figure F2-9 Brammar. “Legislators on Stairs.” Photograph. Ca. 1961-1963. Wyoming State Archives. 11 Sept 2013.



Figure F2-7



Figure F2-8



Figure F2-9



Figure F2-10



Figure F2-11



Figure F2-12

Figure F2-10 Brammar. “Choir and Piano in Capitol Rotunda” Photograph. Ca. 1962. Wyoming State Archives. 11 Sept 2013.

Figure F2-11 Brammar. “Legislator and Harry C. Barker Jr. Seated at Desks in Chamber.” Photograph. Ca. 1962. Wyoming State Archives. 11 Sept 2013.

Figure F2-12 Brammar. “Choir and Piano in Capitol Rotunda from Above.” Photograph. Ca. 1962. Wyoming State Archives. 11 Sept 2013.



Figure F2-13



Figure F2-14



Figure F2-15

Figure F2-13 Brammar. “Governor Hickey and Family Riding in Cheyenne Fire Department Parade, Behind Capitol Building.” Photograph. Ca. 1962. Wyoming State Archives. 11 Sept 2013.

Figure F2-14 Brammar. “Legislator Jack Van Mark at Desk in Chambers.” Photograph. Ca. 1962. Wyoming State Archives. 11 Sept 2013.

Figure F2-15 Unknown. “Senate President at Desk with Clerks During Session.” Photograph. Ca. 1962. Wyoming State Archives. 11 Sept 2013.



Figure F2-16



Figure F2-17



Figure F2-18

Figure F2-16 Brammar. “Thyra Thompson Opening Legislative Session.” Photograph. Ca. 1963. Wyoming State Archives. 11 Sept 2013.

Figure F2-17 Brammar. “Thyra Thompson Shaking Hands with Representative Harrison at Secretary of State Door in Capitol.” Photograph. Ca. 1963. Wyoming State Archives. 11 Sept 2013.

Figure F2-18 Brammar. “Thyra Thompson and Girl's State Participants in Legislative Chambers.” Photograph. Ca. 1963. Wyoming State Archives. 11 Sept 2013.



Figure F2-19 Brammar. "Legislators at Desks in Chambers During Session." Photograph. Ca. 1963. Wyoming State Archives. 11 Sept 2013.

Figure F2-20 Brammar. "Jack Gage Walking Down Isle in House Chamber." Photograph. Ca. 1963. Wyoming State Archives. 11 Sept 2013.

Figure F2-21 Brammar. "Man and 3 Women Seated at Desk in Front of Legislative Chamber." Photograph. Ca. 1963. Wyoming State Archives. 11 Sept 2013.



Figure F2-19



Figure F2-20



Figure F2-21

Figure F2-22 Brammar. "Two Men Standing at President's Desk in House Chamber." Photograph. Ca. 1963. Wyoming State Archives. 11 Sept 2013.

Figure F2-23 Brammar. "Opening Legislative Session, Speakers Desk in House Chamber." Photograph. Ca. 1963. Wyoming State Archives. 11 Sept 2013.

Figure F2-24 Brammar. "Legislator and Clerks in Chambers." Photograph. Ca. 1963. Wyoming State Archives. 11 Sept 2013.



Figure F2-22



Figure F2-23



Figure F2-24

Figure F2-25 Brammar. "Shaking Hands After Opening of Legislative Session in House Chamber." Photograph. Ca. 1963. Wyoming State Archives. 11 Sept 2013.

Figure F2-26 Brammar. "Man with Spanish American War Memorial on Capitol Grounds." Photograph. Ca. 1963. Wyoming State Archives. 11 Sept 2013.

Figure F2-27 Brammar. "Man with Spanish American War Memorial on Capitol Grounds 2." Photograph. Ca. 1963. Wyoming State Archives. 11 Sept 2013.



Figure F2-25



Figure F2-26



Figure F2-27





Figure F2-28



Figure F2-29



Figure F2-30

Figure F2-28 Brammar. “Two Unidentified Women Sitting in Hall, Possibly in Capitol Building.” Photograph. Ca. 1963. Wyoming State Archives. 11 Sept 2013.

Figure F2-29 Brammar. “Senate President’s Desk and Clerks During Session.” Photograph. Ca. 1963. Wyoming State Archives. 11 Sept 2013.

Figure F2-30 Brammar. “Unidentified Men in front of Senate President’s Desk in Chamber.” Photograph. Ca. 1963. Wyoming State Archives. 11 Sept 2013.



Figure F2-31



Figure F2-32



Figure F2-33

Figure F2-31 Brammar. “Jack Gage at Podium in House Chambers.” Photograph. Ca. 1963. Wyoming State Archives. 11 Sept 2013.

Figure F2-32 Brammar. “House Chambers from Gallery During Session.” Photograph. Ca. 1963. Wyoming State Archives. 11 Sept 2013.

Figure F2-33 Brammar. “Legislative Session Opening in House Chambers.” Photograph. Ca. 1963. Wyoming State Archives. 11 Sept 2013.



Figure F2-34



Figure F2-35

Figure F2-34 Brammar. “Jack Gage at Podium in House Chambers 2.” Photograph. Ca. 1963. Wyoming State Archives. 11 Sept 2013.

Figure F2-35 Brammar. “President’s Desk and Clerks During Session, Senate Chambers.” Photograph. Ca. 1963. Wyoming State Archives. 11 Sept 2013.



Figure F3-1 Stimson. “Wyoming State Museum in Capitol.” Photograph. Ca. 1902. Wyoming State Archives. 9 May 2013.

Figure F3-2 Stimson. “Wyoming Mineral Display in Capitol.” Photograph. Ca. 1902. Wyoming State Archives. 9 May 2013.

Figure F3-3 Stimson. “Wyoming Fossils and Minerals Display in Capitol.” Photograph. Ca. 1902. Wyoming State Archives. 9 May 2013.



Figure F3-1



Figure F3-2



Figure F3-3

Figure F3-4 Stimson. “Wyoming Fossil and Mineral Display at Capitol.” Photograph. Ca. 1902. Wyoming State Archives. 9 May 2013.

Figure F3-5 Stimson. “Wyoming Historical Gallery in Capitol.” Photograph. Ca. 1902. Wyoming State Archives. 9 May 2013.

Figure F3-6 Stimson. “State Library in Capitol.” Photograph. Ca. 1902. Wyoming State Archives. 9 May 2013.



Figure F3-4



Figure F3-5



Figure F3-6

Figure F3-7 Stimson. “Capitol Building Dome Looking Up in Rotunda.” Photograph. Ca. 1902. Wyoming State Archives. 9 May 2013.

Figure F3-8 Stimson. “Wyoming State Capitol Building Exterior.” Photograph. Ca. 1902. Wyoming State Archives. 9 May 2013.

Figure F3-9 Stimson. “Aerial View of Capitol Site from the North.” Photograph. Ca. 1930. Wyoming State Archives. 9 May 2013.



Figure F3-7



Figure F3-8



Figure F3-9



Figure F3-10

Figure F3-10 Stimson. “Capitol Building East Entrance.” Photograph. Ca. 1938. Wyoming State Archives. 9 May 2013.



Figure F4-1 Unknown. “Wyoming Capitol Building from Seale’s Temples of Democracy.” Photograph. Ca. 1886. Wyoming State Archives. 9 May 2013.

Figure F4-2 Unknown. “Wyoming State Capitol Exterior.” Photograph. Ca. 1888. Wyoming State Archives. 9 May 2013.

Figure F4-3 Unknown. “Post-Construction Photograph - Rotunda East Stair.” Photograph. Ca. 1888. Wyoming State Archives. 9 May 2013.

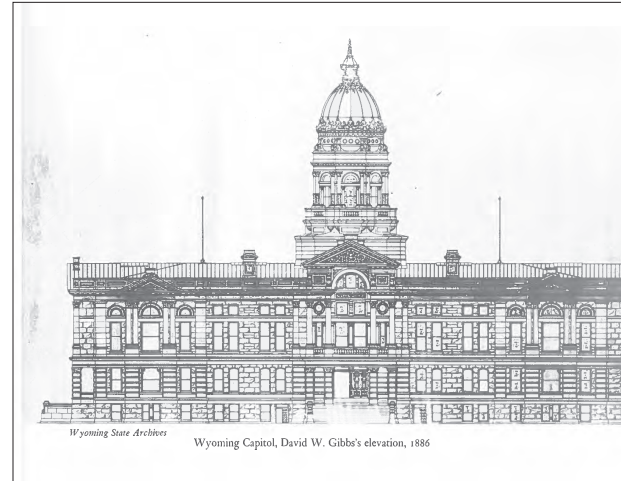


Figure F4-1



Figure F4-2



Figure F4-3

Figure F4-4 Unknown. “Wyoming State Capitol Building Exterior.” Photograph. Ca. 1890. Wyoming State Archives. 9 May 2013.

Figure F4-5 Unknown. “Elwood Mead in the State Engineer’s Office.” Photograph. Ca. 1895. Wyoming State Archives. 9 May 2013.

Figure F4-6 Unknown. “Governor WA Richards, daughters Edna, Ruth, and Alice, Stitzer, Captain O’Brien, Coburn and Foote.” Photograph. Ca. 1898. Wyoming State Archives. 9 May 2013.



Figure F4-4



Figure F4-5



Figure F4-6

Figure F4-7 Unknown. “Enrolling and Engrossing Clerks for Wyoming State Legislature, House of Representative.” Photograph. Ca. 1899. Wyoming State Archives. 9 May 2013.

Figure F4-8 Unknown. “Wyoming State Legislators in the House Chambers.” Photograph. Ca. 1900. Wyoming State Archives. 9 May 2013.

Figure F4-9 Unknown. “Wyoming State Legislators in the Senate Chambers.” Photograph. Ca. 1900. Wyoming State Archives. 9 May 2013.



Figure F4-7



Figure F4-8



Figure F4-9

Wyoming State Archives, Miscellaneous



Figure F4-10



Figure F4-11



Figure F4-12

- Figure F4-10** Unknown. “Man at Desk, Possibly Clarence D. Clark.” Photograph. Ca. 1900. Wyoming State Archives. 9 May 2013.
- Figure F4-11** Unknown. “House Chamber.” Photograph. Ca. 1901. Wyoming State Archives. 9 May 2013.
- Figure F4-12** Unknown. “Senate Chamber.” Photograph. Ca. 1901. Wyoming State Archives. 9 May 2013.



Figure F4-13



Figure F4-14



Figure F4-15

- Figure F4-13** Unknown. “Rotunda Ceiling.” Photograph. Ca. 1902. Wyoming State Archives. 12 Dec 2012.
- Figure F4-14** Unknown. “7th Legislature of the State of Wyoming.” Photograph. Ca. 1903. Wyoming State Archives. 9 May 2013.
- Figure F4-15** Unknown. “Legislators Standing on the Steps of the Capitol.” Photograph. Ca. 1909. Wyoming State Archives. 9 May 2013.



Figure F4-16



Figure F4-17



Figure F4-18

- Figure F4-16** Unknown. “Governor Kendrick Inauguration Speech in front of Capitol Building.” Photograph. Ca. 1915. Wyoming State Archives. 9 May 2013.
- Figure F4-17** Unknown. “Governor Kendrick and Governor JM Carey Walking to Capitol for Inauguration.” Photograph. Ca. 1915. Wyoming State Archives. 9 May 2013.
- Figure F4-18** Unknown. “Front View of Capitol from Street.” Photograph. Ca. 1920. Wyoming State Archives. 9 May 2013.



Figure F4-19 Unknown. "Possible Inaguration of Nellie Tayloe Ross 2." Photograph. Ca. 1925. Wyoming State Archives. 9 May 2013.

Figure F4-20 Unknown. "Nellie Tayloe Ross seated with three men, two boyscouts and Collier Trophy." Photograph. Ca. 1925. Wyoming State Archives. 9 May 2013.

Figure F4-21 Unknown. "Nellie Tayloe Ross at Desk." Photograph. Ca. 1925. Wyoming State Archives. 9 May 2013.

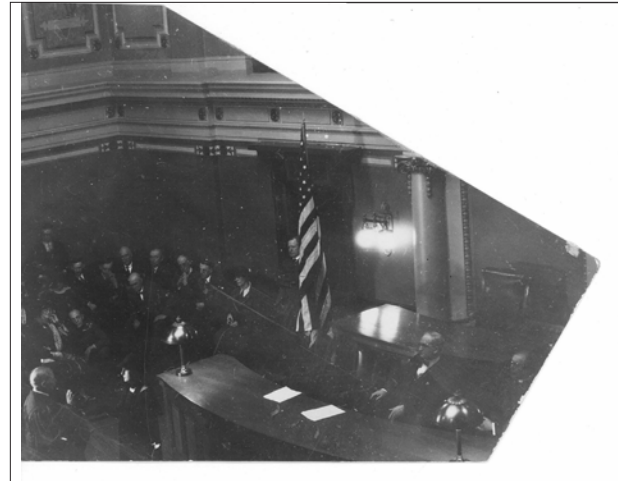


Figure F4-19



Figure F4-20



Figure F4-21

Figure F4-22 Unknown. "Citizenship Trophy in front of Capitol Building with Governor Nellie Tayloe Ross (foreground)." Photograph. Ca. 1925. Wyoming State Archives. 9 May 2013.

Figure F4-23 Unknown. "Wyoming Capitol Building Chambers possibly for Nellie Tayloe Ross Inaguration." Photograph. Ca. 1925. Wyoming State Archives. 9 May 2013.

Figure F4-24 Unknown. "Collage with Nellie Tayloe Ross and Capitol Building." Photograph. Ca. 1926. Wyoming State Archives. 9 May 2013.



Figure F4-22



Figure F4-23



Figure F4-24

Figure F4-25 Unknown. "Inauguration of Frank Emerson." Photograph. Ca. 03 Jan 1927. Wyoming State Archives. 9 May 2013.

Figure F4-26 Unknown. "Wyoming Governors Conference of 1927 Including Nellie Tayloe Ross." Photograph. Ca. 1927. Wyoming State Archives. 9 May 2013.

Figure F4-27 Unknown. "Looking at Capitol from Street." Photograph. Ca. 1930. Wyoming State Archives. 9 May 2013.



Figure F4-25



Figure F4-26



Figure F4-27



Figure F4-28



Figure F4-29



Figure F4-30

Figure F4-28 Unknown. “Governor Leslie Miller and Wyoming Politicians Cutting Cheese, National Cheese Week.” Photograph. Ca. 1935. *Wyoming State Archives*. 9 May 2013.

Figure F4-29 Unknown. “Governor Miller, Margaret Burke, Ruth Kingham, Scotty Jack, Lester Hunt at Pacific International Flag Expo.” Photograph. Ca. 1935. *Wyoming State Archives*. 9 May 2013.

Figure F4-30 Unknown. “Governor Joe and Mrs. Hickey and Sons on Horseback in Front of Capitol.” Photograph. Ca. 1960. *Wyoming State Archives*. 9 May 2013.



Figure F4-31



Figure F4-32



Figure F4-33

Figure F4-31 Unknown. “Wyoming Senate in Session.” Photograph. Ca. 1960-1961. *Wyoming State Archives*. 9 May 2013.

Figure F4-32 Unknown. “Standing Vote Budget Session.” Photograph. Ca. 1975. *Wyoming State Archives*. 9 May 2013.

Figure F4-33 Unknown. “Legislative Chamber, Wyoming Capitol Building.” Photograph. Ca. 1980. *Wyoming State Archives*. 9 May 2013.

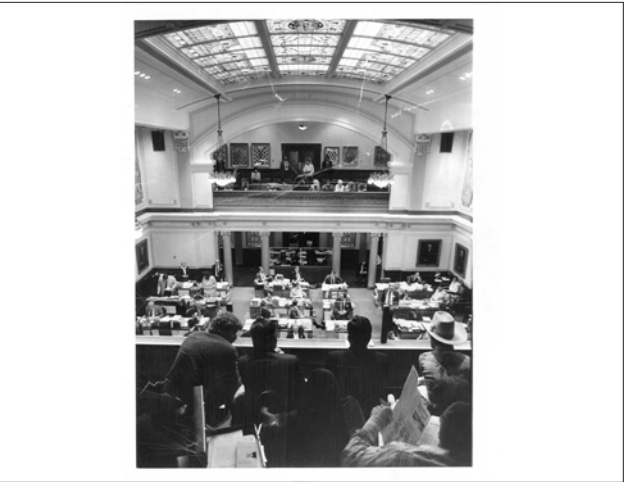


Figure F4-34



Figure F4-35

Figure F4-34 Unknown. “Legislators.” Photograph. Ca. 1980. *Wyoming State Archives*. 9 May 2013.

Figure F4-35 Unknown. “Wyoming State Legislature Senate Chambers.” Photograph. Ca. 1980. *Wyoming State Archives*. 9 May 2013.



Figure F4-36 Unknown. “Statehood Celebration.” Photograph. Ca. 1990. Wyoming State Archives. 9 May 2013.

Figure F4-37 Unknown. “Statehood Celebration 2.” Photograph. Ca. 1990. Wyoming State Archives. 9 May 2013.

Figure F4-38 Unknown. “Statehood Celebration 3.” Photograph. Ca. 1990. Wyoming State Archives. 9 May 2013.



Figure F4-36



Figure F4-37



Figure F4-38



THIS PAGE INTENTIONALLY LEFT BLANK



Figure F5-1 Unknown. “Wyoming State Capitol Building Exterior.” Photograph. Ca. 1979. *Historical American Building Survey*. 20 Nov 2012.

Figure F5-2 Unknown. “Wyoming State Capitol Building Exterior.” Photograph. Ca. 1979. *Historical American Building Survey*. 20 Nov 2012.

Figure F5-3 Unknown. “Wyoming State Capitol Building Exterior.” Photograph. Ca. 1979. *Historical American Building Survey*. 20 Nov 2012.



Figure F5-1



Figure F5-2



Figure F5-3

Figure F5-4 Unknown. “Wyoming State Capitol Building Entry.” Photograph. Ca. 1979. *Historical American Building Survey*. 20 Nov 2012.

Figure F5-5 Unknown. “Wyoming State Capitol Building Entry 2.” Photograph. Ca. 1979. *Historical American Building Survey*. 20 Nov 2012.

Figure F5-6 Unknown. “Wyoming State Capitol Building Dome.” Photograph. Ca. 1979. *Historical American Building Survey*. 20 Nov 2012.



Figure F5-4



Figure F5-5



Figure F5-6

Figure F5-7 Unknown. “Wyoming State Capitol Building Main Entry Doors.” Photograph. Ca. 1979. *Historical American Building Survey*. 20 Nov 2012.

Figure F5-8 Unknown. “Wyoming State Capitol Building Door Open to Exterior.” Photograph. Ca. 1979. *Historical American Building Survey*. 20 Nov 2012.

Figure F5-9 Unknown. “Wyoming State Capitol Building Interior Stair.” Photograph. Ca. 1979. *Historical American Building Survey*. 20 Nov 2012.



Figure F5-7



Figure F5-8

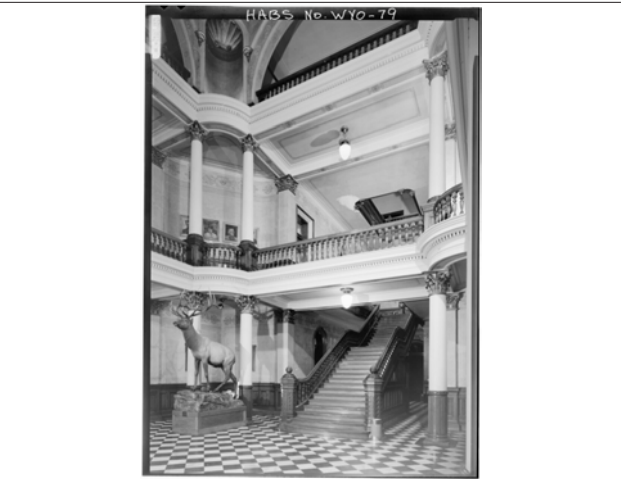


Figure F5-9



Figure F5-10



Figure F5-11



Figure F5-12

- Figure F5-10** Unknown. “Wyoming State Capitol Building: Entry to Governor’s Office.” Photograph. Ca. 1979. *Historical American Building Survey*. 20 Nov 2012.
- Figure F5-11** Unknown. “Wyoming State Capitol Building Stair Detail.” Photograph. Ca. 1979. *Historical American Building Survey*. 20 Nov 2012.
- Figure F5-12** Unknown. “Wyoming State Capitol Building Skylight Detail.” Photograph. Ca. 1979. *Historical American Building Survey*. 20 Nov 2012.



Figure F5-13

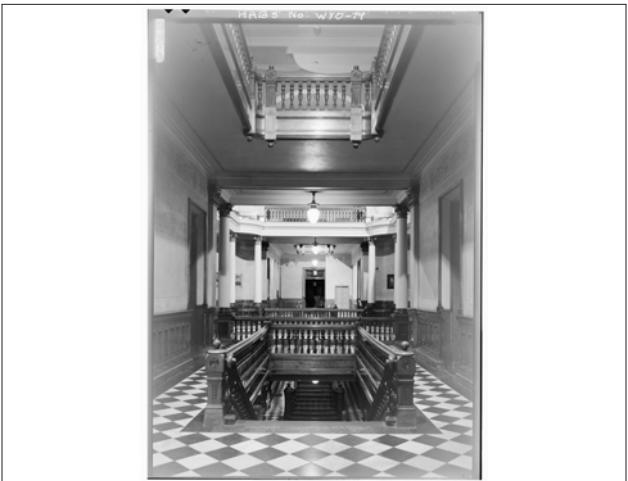


Figure F5-14



Figure F5-15

- Figure F5-13** Unknown. “Wyoming State Capitol Building Dome Interior.” Photograph. Ca. 1979. *Historical American Building Survey*. 20 Nov 2012.
- Figure F5-14** Unknown. “Wyoming State Capitol Building Stairwell from Upper Level.” Photograph. Ca. 1979. *Historical American Building Survey*. 20 Nov 2012.
- Figure F5-15** Unknown. “Wyoming State Capitol Building Cornice Detail.” Photograph. Ca. 1979. *Historical American Building Survey*. 20 Nov 2012.



Figure F5-16



Figure F5-17



Figure F5-18

- Figure F5-16** Unknown. “Wyoming State Capitol Building Cornice Detail with Painting.” Photograph. Ca. 1979. *Historical American Building Survey*. 20 Nov 2012.
- Figure F5-17** Unknown. “Wyoming State Capitol Building, Exterior, Color.” Photograph. Ca. 1979. *Historical American Building Survey*. 20 Nov 2012.
- Figure F5-18** Unknown. “Wyoming State Capitol Building, Exterior, Color 2.” Photograph. Ca. 1979. *Historical American Building Survey*. 20 Nov 2012.



Figure F6-1 Unknown. “Chambers During Session from Upper Level.” Photograph. Ca. 2013. Wyoming State Archives. 12 Sept 2013.

Figure F6-2 Unknown. “Chambers During Session from Upper Level 2.” Photograph. Ca. 2013. Wyoming State Archives. 12 Sept 2013.

Figure F6-3 Unknown. “Chambers During Session.” Photograph. Ca. 2013. Wyoming State Archives. 12 Sept 2013.



Figure F6-1



Figure F6-2



Figure F6-3

Figure F6-4 Unknown. “Chambers During Session.” Photograph. Ca. 2013. Wyoming State Archives. 12 Sept 2013.



Figure F6-4



THIS PAGE INTENTIONALLY LEFT BLANK



Figure F7-1 Unknown. “Wyoming Capitol Building During State of the State, 1.” Photograph. Ca. 2013. Wyoming State Archives. 12 Sept 2013.

Figure F7-2 Unknown. “Wyoming Capitol Building During State of the State, 2.” Photograph. Ca. 2013. Wyoming State Archives. 12 Sept 2013.

Figure F7-3 Unknown. “Wyoming Capitol Building During State of the State, 3.” Photograph. Ca. 2013. Wyoming State Archives. 12 Sept 2013.



Figure F7-1



Figure F7-2



Figure F7-3



THIS PAGE INTENTIONALLY LEFT BLANK



- Figure F8-1 Unknown. “Wyoming State Capitol Building During Inaguration 1.” Photograph. Ca. 2011. Wyoming State Archives. 12 Sept 2013.
- Figure F8-2 Unknown. “Wyoming State Capitol Building During Inaguration 2.” Photograph. Ca. 2011. Wyoming State Archives. 12 Sept 2013.
- Figure F8-3 Unknown. “Wyoming State Capitol Building During Inaguration 3.” Photograph. Ca. 2011. Wyoming State Archives. 12 Sept 2013.



Figure F8-1



Figure F8-2



Figure F8-3

- Figure F8-4 Unknown. “Wyoming State Capitol Building During Inaguration 4.” Photograph. Ca. 2011. Wyoming State Archives. 12 Sept 2013.



Figure F8-4

