

Appendix L : Exterior Masonry Survey Field Notes

Exterior Masonry Survey Field Notes

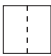




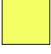





INTRODUCTION

As part of the **Level I / Level II Study**, the Design Team of HDR/PDP performed a visual assessment of the existing exterior masonry and sheet metal parapet conditions of the Wyoming State Capitol. The team was responsible for performing a comprehensive survey of the masonry and sheet metal parapet, photographing and documenting the existing conditions on survey sheets.

The Design Team conducted the masonry and sheet metal parapet survey during the week of May 13, 2013. An 80-foot portable lift was used to perform the close-up visual assessment. The building elevations from grade to the top of the first floor windows were observed from the ground for the full perimeter of the building. The HDR/PDP Team mapped the types and locations of masonry distress evident with the goal to provide an overview of the condition of the masonry and identify the general extent and types of deterioration present in the masonry envelope.

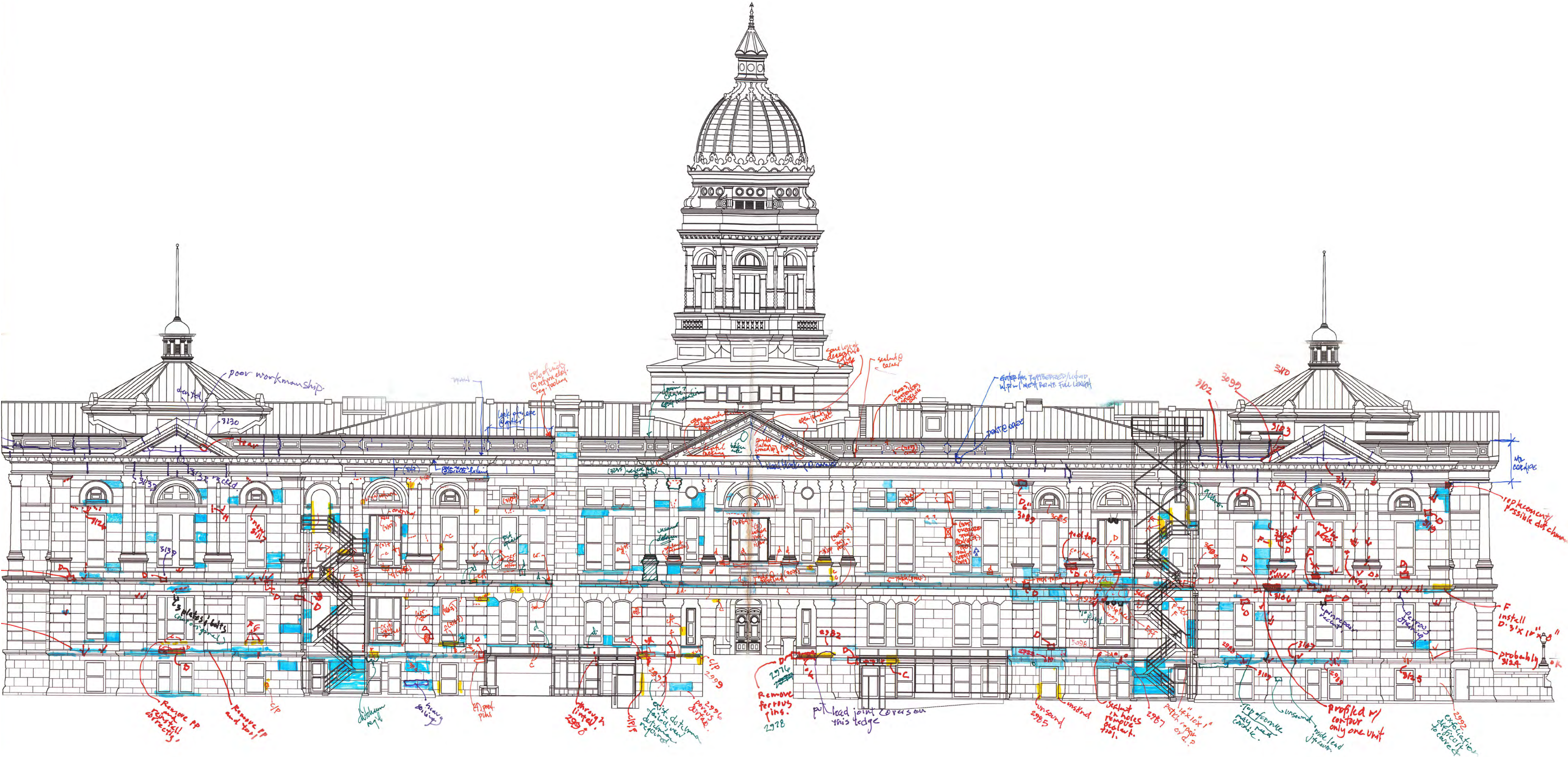
In order to exhibit the depth and level of detail of the work performed, the survey information is included here as part of **Appendix L – Exterior Masonry Survey Field Notes**. A detailed discussion of the observed exterior envelope conditions are included as part of *Volume I Section 5, “Site & Building Assessment.”*

DRAWING KEY

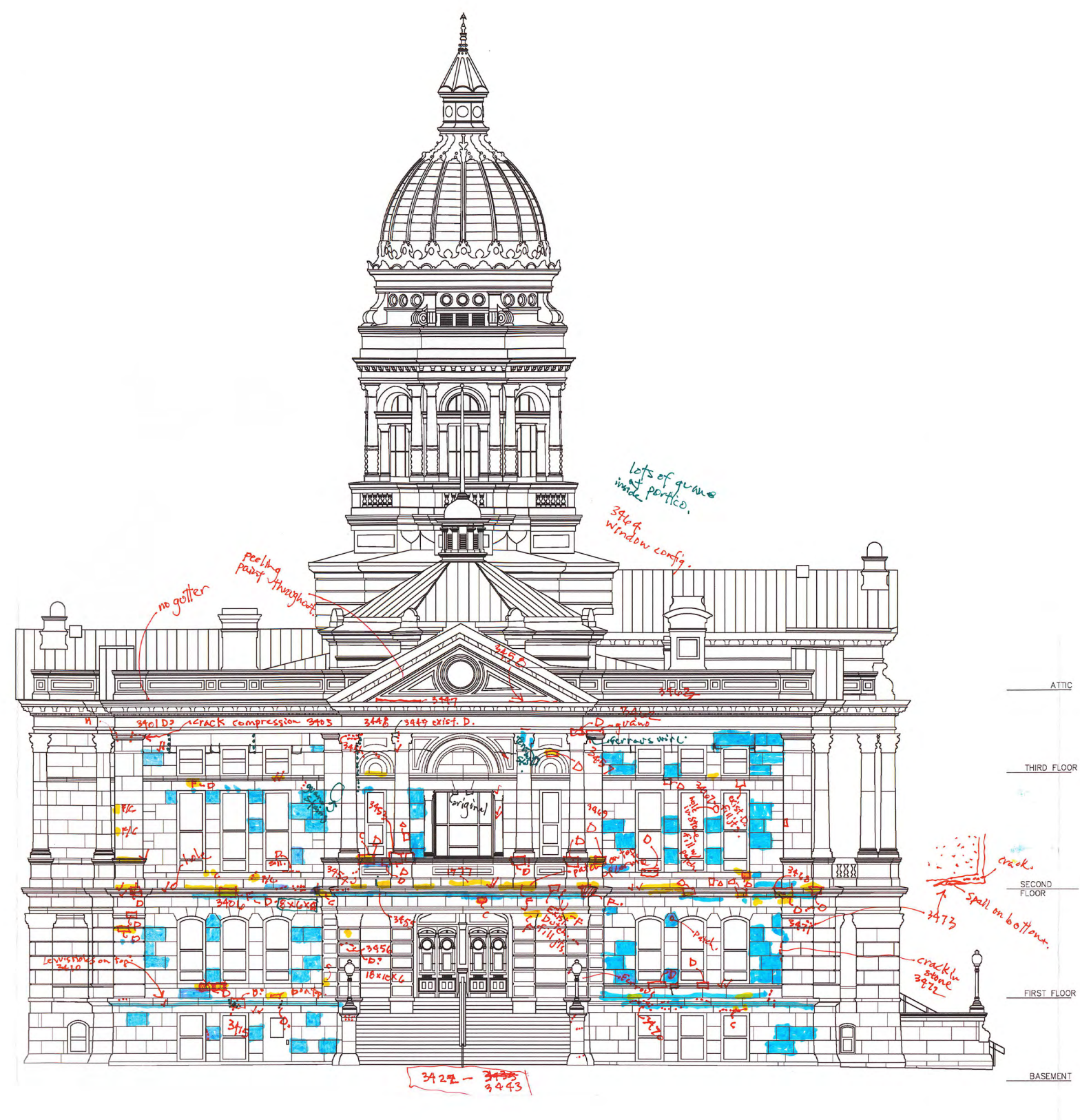
	CRACK
	DUTCHMAN: FLAT, PROFILED, CARVED
	REPLACE
 or 	RETOOL
	EXISTING PATCH REPAIR
	FAILED PATCH
	PATCH WITH POOR COLOR MATCH
	POORLY IMPLEMENTED PATCH
	UNSOUND AREA OF STONE
	GUANO
	<ul style="list-style-type: none">• lintel repairs• remove anchor and patch hole

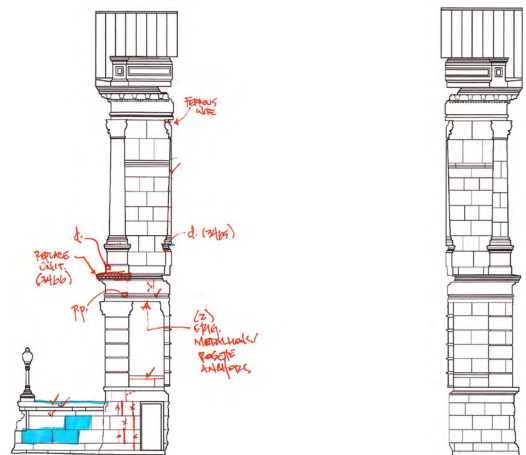


North Elevation

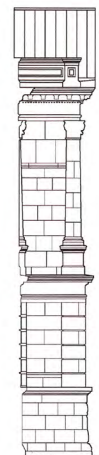


West Elevation

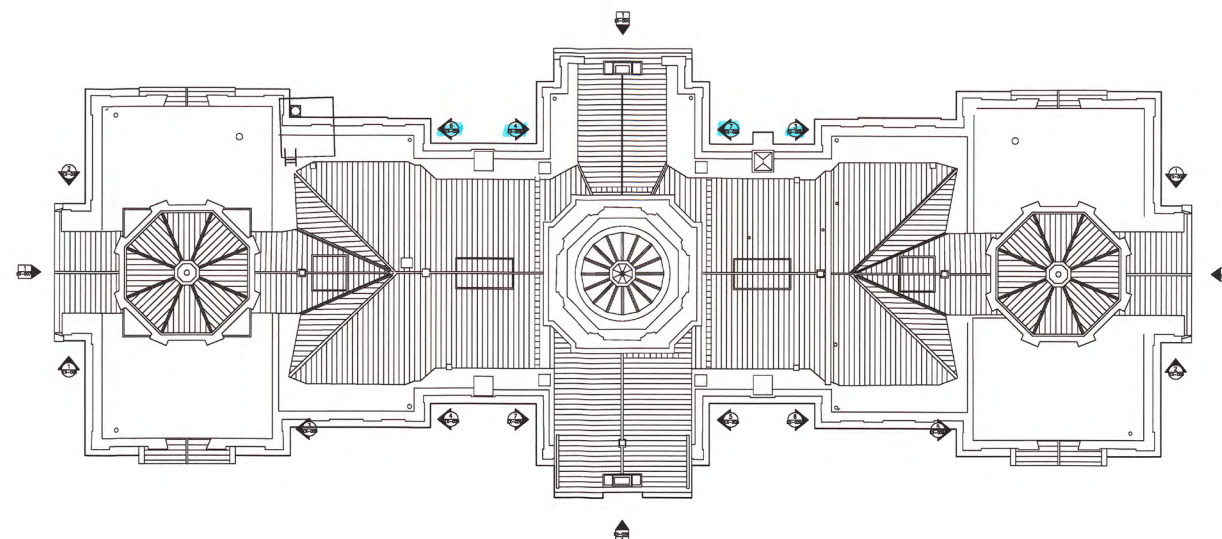




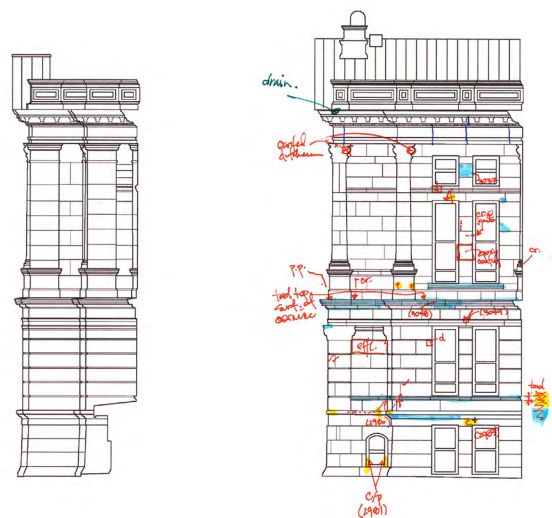
① R-8 SOUTH ELEVATION
SCALE: 3/32"=1'-0"



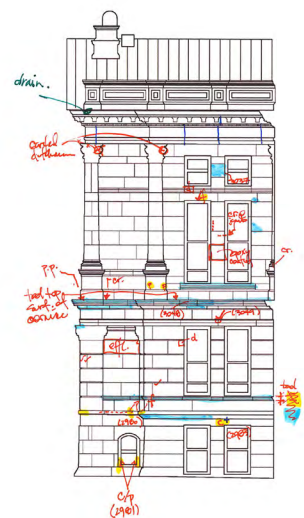
② R-9 SOUTH ELEVATION
SCALE: 3/32"=1'-0"



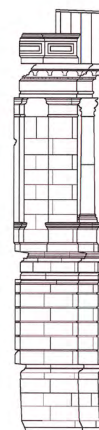
LOCATION PLAN
SCALE: 3/64"=1'-0"



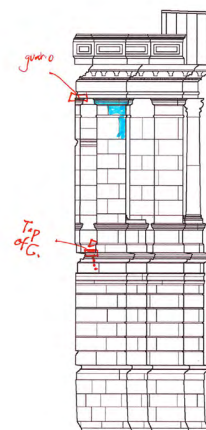
③ R-10 WEST ELEVATION
SCALE: $3/32" = 1'-0"$



4 R-11 WEST ELEVATION
SCALE: 3/32"=1'-0"



⑤ R-12 WEST ELEVATION
SCALE: $3/32" = 1'-0"$

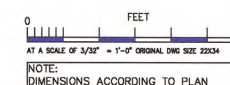


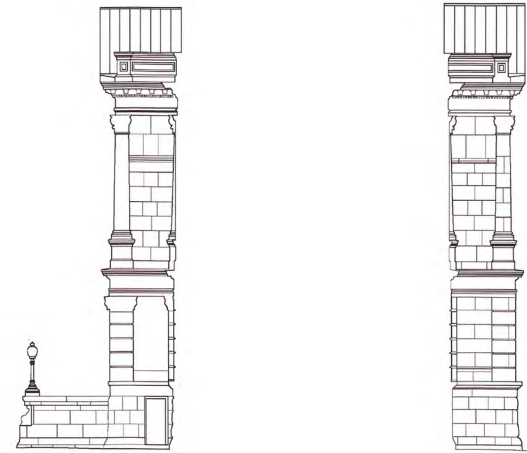
⑥ R-13 WEST ELEVATION
SCALE: $\frac{3}{32}'' = 1'-0''$



7 R-14 WEST ELEVATION
SCALE: 3/32"=1'-0"

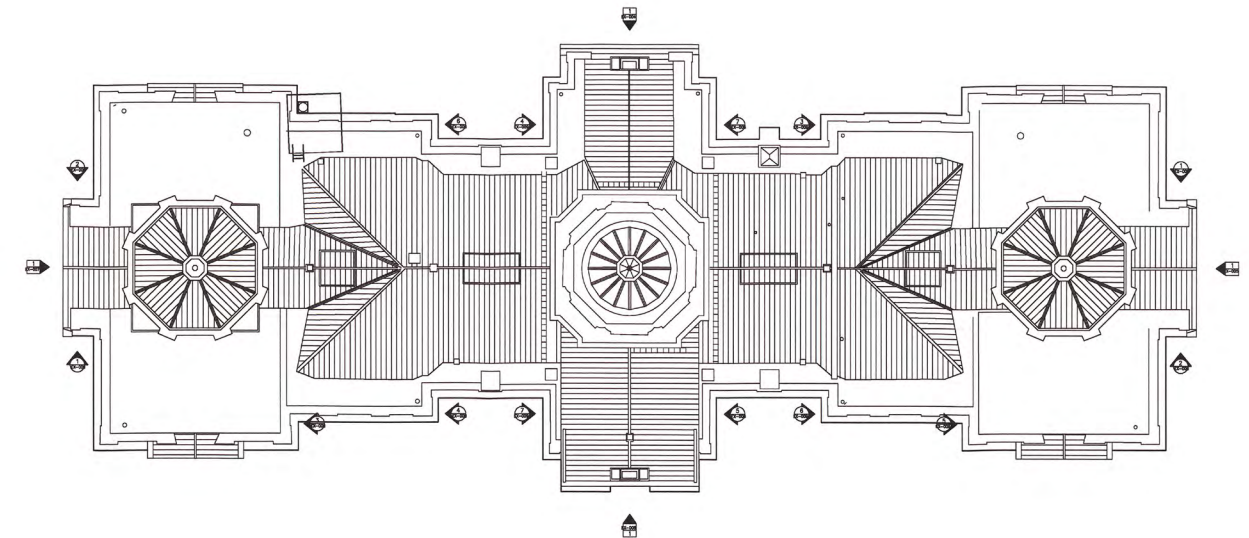
NOT FOR CONSTRUCTION USE. FOR DESIGN PURPOSES ONLY.



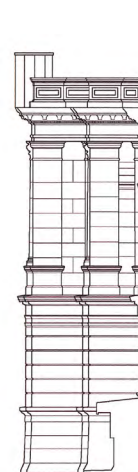


① R-8 SOUTH ELEVATION
SCALE: 3/32"=1'-0"

② R-9 SOUTH ELEVATION
SCALE: 3/32"=1'-0"



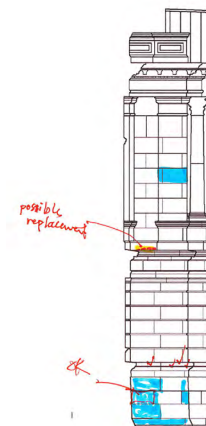
LOCATION PLAN
SCALE: 3/64"=1'-0"



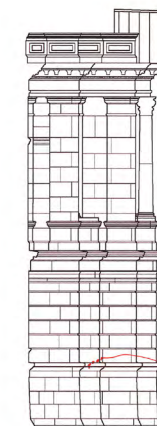
③ R-10 WEST ELEVATION
SCALE: 3/32"=1'-0"



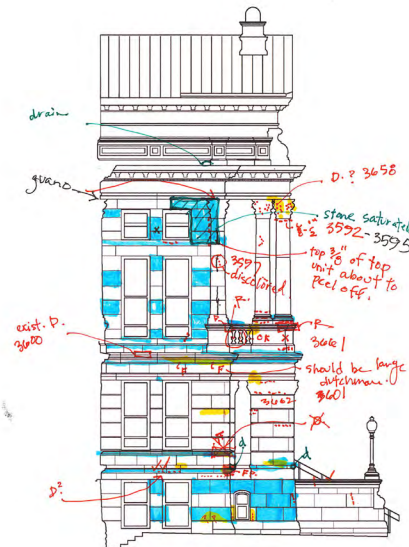
④ R-11 WEST ELEVATION
SCALE: 3/32"=1'-0"



⑤ R-12 WEST ELEVATION
SCALE: 3/32"=1'-0"

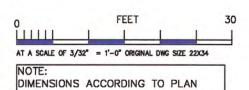


⑥ R-13 WEST ELEVATION
SCALE: 3/32"=1'-0"

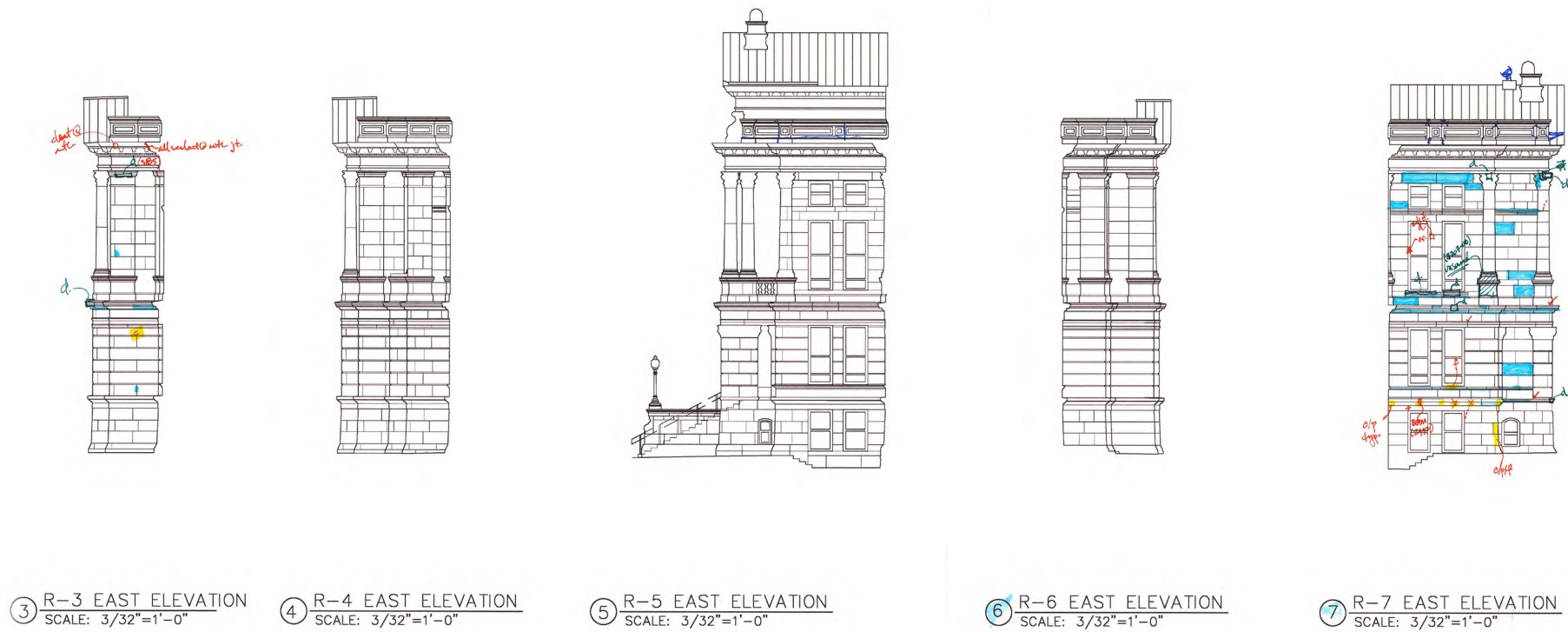
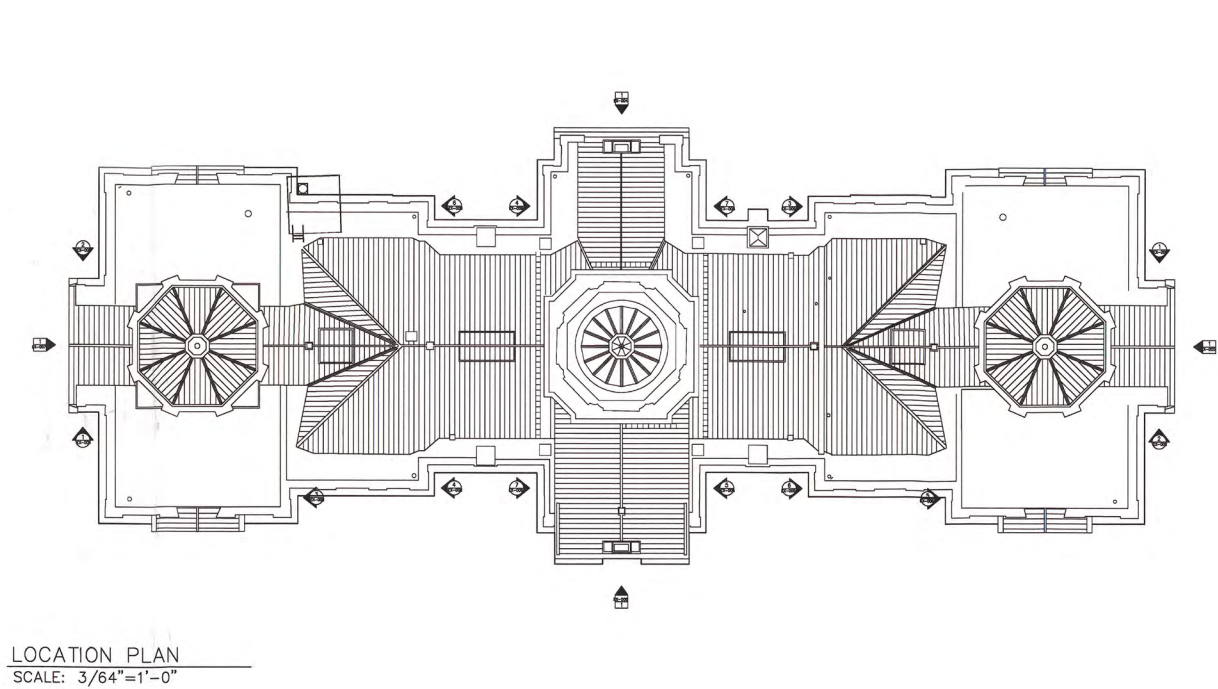
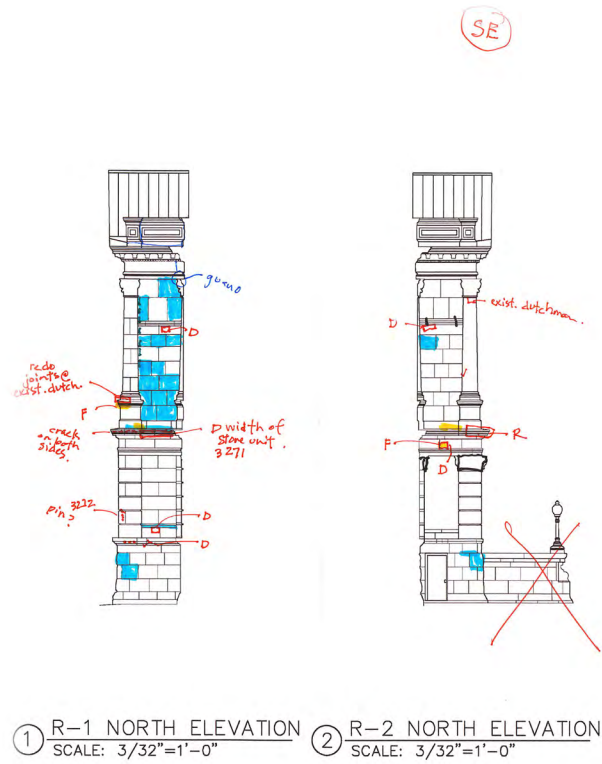


⑦ R-14 WEST ELEVATION
SCALE: 3/32"=1'-0"

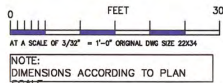
NOT FOR CONSTRUCTION USE. FOR DESIGN PURPOSES ONLY.

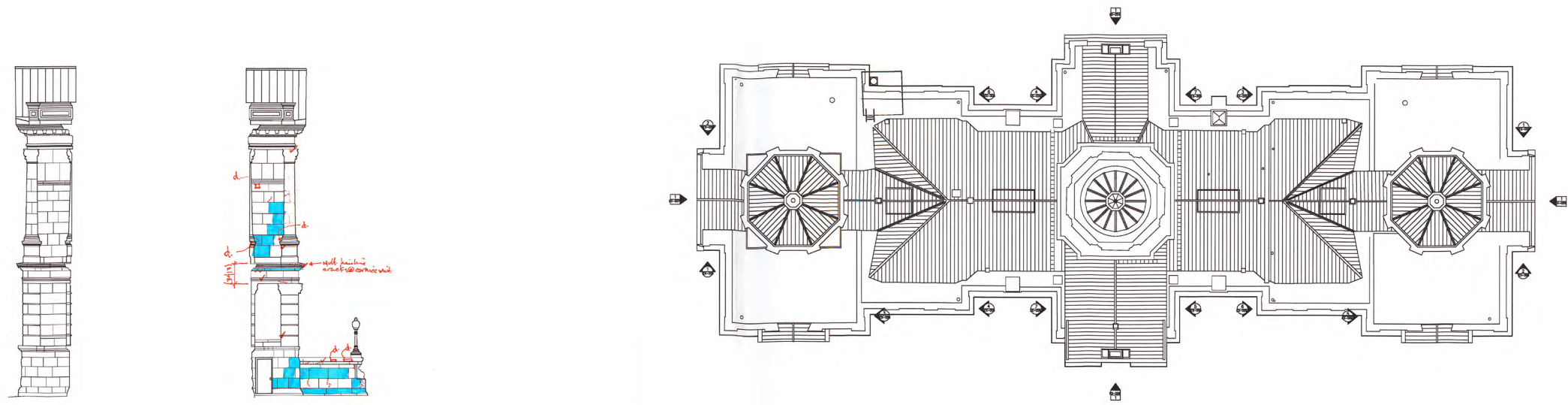


Returns



NOT FOR CONSTRUCTION USE. FOR DESIGN PURPOSES ONLY

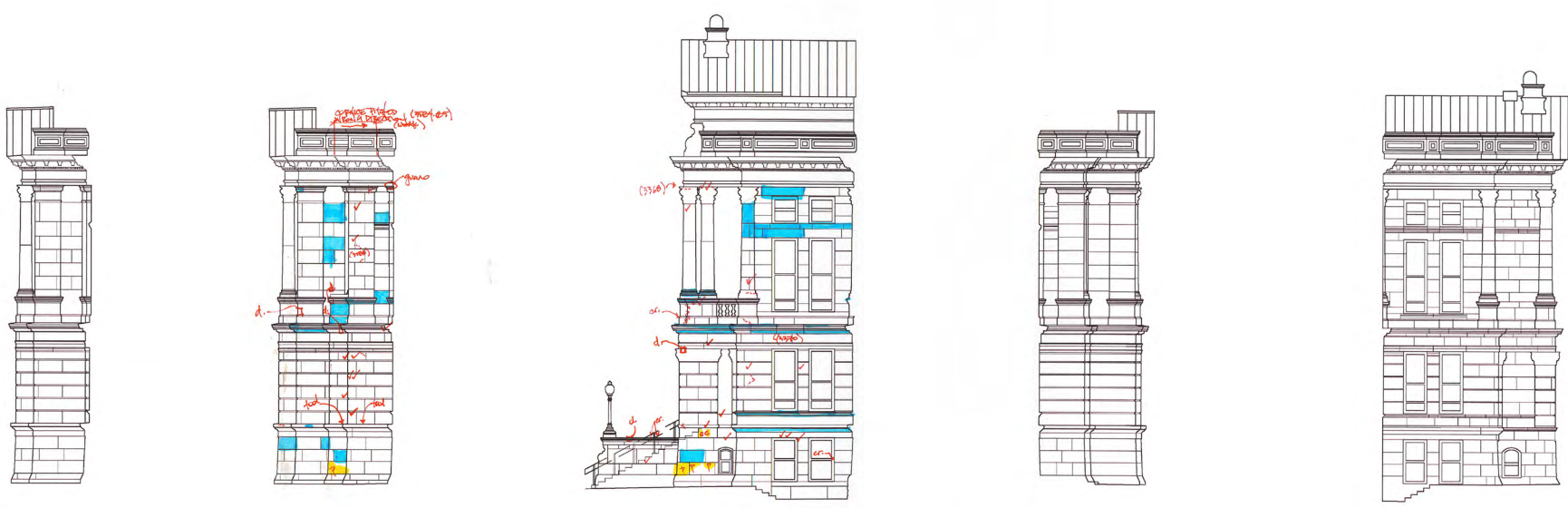




① R-1 NORTH ELEVATION
SCALE: 3/32"=1'-0"

② R-2 NORTH ELEVATION
SCALE: 3/32"=1'-0"

LOCATION PLAN
SCALE: 3/64"=1'-0"



③ R-3 EAST ELEVATION
SCALE: 3/32"=1'-0"

④ R-4 EAST ELEVATION
SCALE: 3/32"=1'-0"

⑤ R-5 EAST ELEVATION
SCALE: 3/32"=1'-0"

⑥ R-6 EAST ELEVATION
SCALE: 3/32"=1'-0"

⑦ R-7 EAST ELEVATION
SCALE: 3/32"=1'-0"

NOT FOR CONSTRUCTION USE. FOR DESIGN PURPOSES ONLY.

