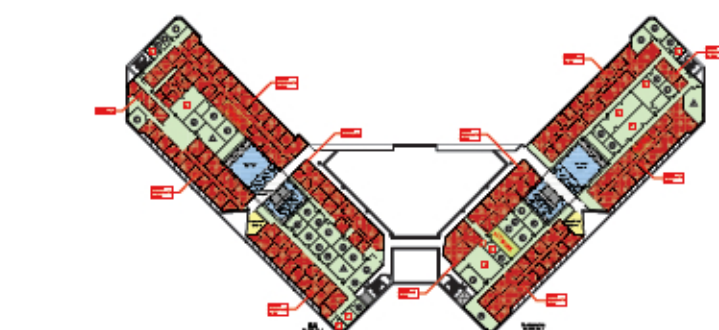
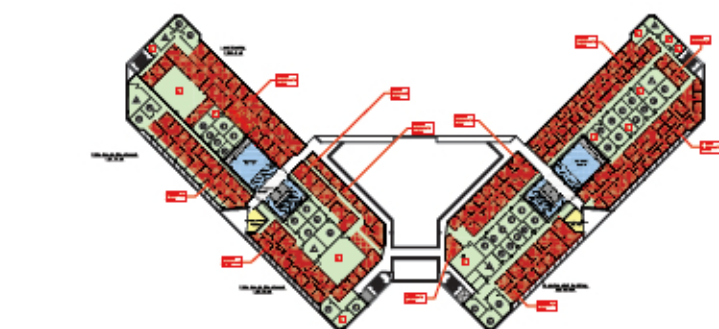
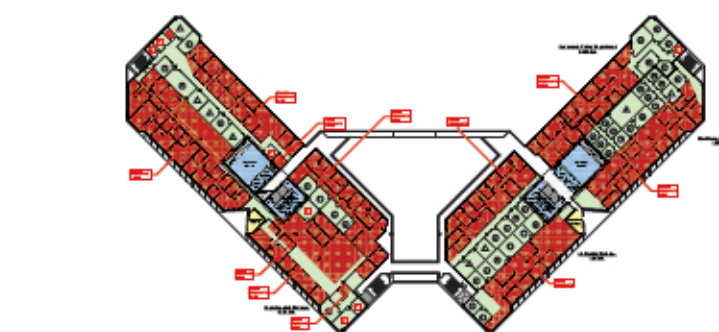


Appendix B : Detailed Programming Data

SPACE LIST WORKSHEET - GENERAL SUMMARY - HERSHLER

Room Name/Functional Area	LOCATION	OBSERVED ASSIGNMENTS		PROGRAM SUGGESTION		
		# Occupants	Area [SF]	Area [SF]	Difference	% Change
51.00 Abandoned Mine Lands & IT Division	1W	9	2,959	1,882	-1,077	36%
52.00 Air Quality Division	2E	44	9,572	7,373	-2,199	23%
53.00 Board of Equalization	1W	6	2,193	1,730	-463	21%
54.00 Department of Auditing	3E	101	21,169	15,406	-5,763	27%
55.00 Department of Environmental Quality	4W	92	21,147	13,750	-7,397	35%
56.00 Department of Revenue	2W	73	22,312	12,518	-9,794	44%
57.00 Development Disability	1W	15	4,558	2,786	-1,772	39%
58.00 Employment & Training	1E	17	4,206	2,998	-1,208	29%
59.00 Engineering	4E	69	21,339	10,841	-10,498	49%
60.00 Enterprise Tech Services	1E	13	2,506	1,798	-708	28%
61.00 Fire Prevention and Elec. Safety	1W	16	5,431	3,151	-2,279	42%
62.00 Governor's Policy Department	2E	15	3,754	2,928	-826	22%
63.00 Land Quality	3W	28	8,228	5,064	-3,164	38%
64.00 School of Finance Lit.	1E	3	973	660	-313	32%
65.00 Site Lands Department	3W	41	13,420	7,226	-6,194	46%
66.00 Victim Services	1W	8	4,048	2,071	-1,977	49%
67.00 Vocational Rehab Office	1E	20	5,341	3,718	-1,623	30%
68.00 Workforce Development	2E	33	8,087	6,029	-2,058	25%
69.00 Vacant	1E	14	2,624	0	-2,624	100%
70.00 Common Spaces	1E	2	5,555	8,730	-3,175	-57%
70.00 Common Spaces	1W	0	2,547	1,600	947	37%
70.00 Common Spaces	2E	0	192	125	67	35%
70.00 Common Spaces	2W	0	194	125	69	36%
70.00 Common Spaces	3E	0	224	125	99	44%
70.00 Common Spaces	3W	0	222	125	97	44%
70.00 Common Spaces	4E	0	222	125	97	44%
70.00 Common Spaces	4W	0	224	125	99	44%
70.00 Common Spaces subtotal		2	9,380	10,995	-1,575	-17%
TOTAL ASSIGNABLE		619	173,247	112,883	-60,364	35%

280 sf/occ 182 sf/occ



Appendix B Detailed Programming Data

SPACE LIST WORKSHEET - DETAIL: ABANDONED MINE LANDS & IT DIVISION

		OBSERVED ASSIGNMENTS				PROGRAM SUGGESTION	
Room Name/ Functional Area		1FL - West	Staff Count	Room #	Herschler [NASF]	Herschler [NASF]	Comments
51.00	Abandoned Mine Lands & IT						
Administration							
51.01	Private Office		1	1	128	Office 200	
51.02	Private Office		1	2	207	Office 150	
51.03	Private Office		1	3	208	Office 150	
51.04	Private Office		1	4	264	Office 150	
51.05	Private Office		1	5	282	Office 150	
51.06	Private Office		1	6	218	Office 150	
Open Workstations 3 Occupants			3		397		Pro-Rated
51.21						Workstation 80	
51.22						Workstation 80	
						Workstation 80	
Circulation					250	48	Pro-Rated
Support							
51.91	Print/Copy/etc. 2 Workstations				353	250	Pro-Rated
51.98	Storage			1	98	80	
Department Circulation							
Circulation					554	314	Remaining in Department
Subtotal			9		2,959	1,882	

64% of Existing SF



SPACE LIST WORKSHEET - DETAIL: AIR QUALITY DIVISION

Room Name/Functional Area	OBSERVED ASSIGNMENTS				PROGRAM SUGGESTION	
	2FL - East	Staff Count	Room #	Herschler [NASF]	Herschler [NASF]	Comments
52.00 Air Quality Division						
Admin.						
52.01 Private Office	1	1	138	Office	200	
52.02 Private Office	1	2	136	Office	200	
52.03 Private Office	1	3	170	Office	150	
52.04 Private Office	1	4	171	Office	150	
52.05 Private Office	1	5	213	Office	150	
52.06 Private Office	1	6	260	Office	150	
52.07 Private Office	1	7	167	Office	150	
52.08 Private Office	1	8	236	Office	150	
52.09 Private Office	1	9	152	Office	150	
52.10 Private Office	1	10	152	Office	150	
52.11 Private Office	1	11	189	Office	150	
52.12 Private Office	1	12	189	Office	150	
Open Workstations 15 Occupants	Quadrant I	15	2,167			Pro-Rated
Circulation			722			25% Circulation
Open Workstations 19 Occupants	Quadrant II	19	2,205			Pro-Rated
Circulation			735			25% Circulation
52.21				Workstation	80	
52.22				Workstation	80	
52.23				Workstation	80	
52.24				Workstation	80	
52.25				Workstation	80	
52.26				Workstation	80	
52.27				Workstation	80	
52.28				Workstation	80	
52.29				Workstation	80	
52.30				Workstation	80	
52.31				Workstation	80	
52.32				Workstation	80	
52.33				Workstation	80	
52.34				Workstation	80	
52.35				Workstation	80	

SPACE LIST WORKSHEET - DETAIL: AIR QUALITY DIVISION

Room Name/Functional Area	OBSERVED ASSIGNMENTS				PROGRAM SUGGESTION	
	2FL - East	Staff Count	Room #	Herschler [NASF]	Herschler [NASF]	Comments
52.00 Air Quality Division						
52.36				Workstation	80	
52.37				Workstation	80	
52.38				Workstation	80	
52.39				Workstation	80	
52.40				Workstation	80	
52.41				Workstation	80	
52.42				Workstation	80	
52.43				Workstation	80	
52.44				Workstation	80	
52.45				Workstation	80	
52.46				Workstation	80	
52.47				Workstation	80	
52.48				Workstation	80	
52.49				Workstation	80	
52.50				Workstation	80	
52.51				Workstation	80	
52.52				Workstation	80	
52.53				Workstation	80	
52.54				Workstation	80	
Circulation					544	Pro-Rated
Support						
52.81 Conference Room		1	351		400	
52.82 Conference Room		2	190		250	
52.91 Print/Copy/etc. Workstation					250	Pro-rated
52.98 Storage		1	98		80	
Department Circulation						
Circulation				931		Remaining in Department
					1,229	



Appendix B Detailed Programming Data

SPACE LIST WORKSHEET - DETAIL: AIR QUALITY DIVISION

Room Name/Functional Area	OBSERVED ASSIGNMENTS				PROGRAM SUGGESTION	Comments
	2FL - East	Staff Count	Room #	Herschler [NASF]	Herschler [NASF]	
52.00 Air Quality Division						
Subtotal		44		9,572	7,373	

77% of Existing SF

SPACE LIST WORKSHEET - DETAIL: BOARD OF EQUALIZATION

Room Name/Functional Area	OBSERVED ASSIGNMENTS				PROGRAM SUGGESTION	Comments
	1FL - West	Staff Count	Room #	Herschler [NASF]	Herschler [NASF]	
53.00 Board of Equalization						
Administration						
53.01 Private Office		1	19	181	Office 200	
53.02 Private Office		1	20	201	Office 150	
53.03 Private Office		1	21	198	Office 150	
53.04 Private Office		1	22	191	Office 150	
Open Workstations 2 Occupants		2		281		Pro-Rated
53.21					Workstation 80	
53.22					Workstation 80	
Circulation				511	32	
Support						
53.81 Conference Room			6	500	500	
53.91 Print/Copy/etc. 1 Workstation				130	100	Pro-Rated
Department Circulation						
Circulation						Remaining in 288 Department
Subtotal		6		2,193	1,730	

79% of Existing SF



SPACE LIST WORKSHEET - DETAIL: DEPARTMENT OF AUDITING

Room Name/Functional Area	OBSERVED ASSIGNMENTS				PROGRAM SUGGESTION	
	3FL - East	Staff Count	Room #	Herschler [NASF]	Herschler [NASF]	Comments
54.00 Department of Auditing						
Administration						
54.01 Private Office		1	1	197	Office 250	
54.02 Private Office		1	2	236	Office 200	
54.03 Private Office		1	3	296	Office 200	
54.04 Private Office		1	4	182	Office 200	
54.05 Private Office		1	5	144	Office 150	
54.06 Private Office		1	6	145	Office 150	
54.07 Private Office		1	7	144	Office 150	
54.08 Private Office		1	8	243	Office 150	
54.09 Private Office		1	9	212	Office 150	
54.10 Private Office		1	10	129	Office 150	
54.11 Private Office		1	11	141	Office 150	
54.12 Private Office		1	12	145	Office 150	
54.13 Private Office		1	13	133	Office 150	
54.14 Private Office		1	14	203	Office 150	
54.15 Private Office		1	15	203	Office 150	
54.16 Private Office		1	16	146	Office 150	
54.17 Private Office		1	17	124	Office 150	
54.18 Private Office		1	18	208	Office 150	
54.19 Private Office		1	19	208	Office 150	
54.20 Private Office		1	20	174	Office 150	
54.21 Private Office		1	21	167	Office 150	
54.22 Private Office		1	22	214	Office 150	
54.23 Private Office		1	23	123	Office 150	
Open Workstations15 Occupants	Quadrant I	15		1,490		Pro-Rated
Circulation				530		25% Circulation
Open Workstations18 Occupants	Quadrant II	18		1,769		Pro-Rated
Circulation				851		25% Circulation
Open Workstations35 Occupants	Quadrant III	35		2,624		Pro-Rated
Circulation				1,032		25% Circulation
Open Workstations10 Occupants	Quadrant IV	10		1,151		Pro-Rated
Circulation				499		25% Circulation
54.25					Workstation 80	

SPACE LIST WORKSHEET - DETAIL: DEPARTMENT OF AUDITING

Room Name/Functional Area	OBSERVED ASSIGNMENTS				PROGRAM SUGGESTION	
	3FL - East	Staff Count	Room #	Herschler [NASF]	Herschler [NASF]	Comments
54.00 Department of Auditing						
54.26					Workstation 80	
54.27					Workstation 80	
54.28					Workstation 80	
54.29					Workstation 80	
54.30					Workstation 80	
54.31					Workstation 80	
54.32					Workstation 80	
54.33					Workstation 80	
54.34					Workstation 80	
54.35					Workstation 80	
54.36					Workstation 80	
54.37					Workstation 80	
54.38					Workstation 80	
54.39					Workstation 80	
54.40					Workstation 80	
54.41					Workstation 80	
54.42					Workstation 80	
54.43					Workstation 80	
54.44					Workstation 80	
54.45					Workstation 80	
54.46					Workstation 80	
54.47					Workstation 80	
54.48					Workstation 80	
54.49					Workstation 80	
54.50					Workstation 80	
54.51					Workstation 80	
54.52					Workstation 80	
54.53					Workstation 80	
54.54					Workstation 80	
54.55					Workstation 80	
54.56					Workstation 80	
54.57					Workstation 80	
54.58					Workstation 80	
54.59					Workstation 80	



Appendix B Detailed Programming Data

SPACE LIST WORKSHEET - DETAIL: DEPARTMENT OF AUDITING

Room Name/Functional Area	OBSERVED ASSIGNMENTS				PROGRAM SUGGESTION	
	3FL - East	Staff Count	Room #	Herschler [NASF]	Herschler [NASF]	Comments
54.00 Department of Auditing						
54.60					Workstation 80	
54.61					Workstation 80	
54.62					Workstation 80	
54.63					Workstation 80	
54.64					Workstation 80	
54.65					Workstation 80	
54.66					Workstation 80	
54.67					Workstation 80	
54.68					Workstation 80	
54.69					Workstation 80	
54.70					Workstation 80	
54.71					Workstation 80	
54.72					Workstation 80	
54.73					Workstation 80	
57.74					Workstation 80	
54.75					Workstation 80	
54.76					Workstation 80	
54.77					Workstation 80	
54.78					Workstation 80	
54.79					Workstation 80	
54.80					Workstation 80	
54.81					Workstation 80	
54.82					Workstation 80	
54.83					Workstation 80	
54.84					Workstation 80	
54.85a					Workstation 80	
54.85b					Workstation 80	
54.85c					Workstation 80	
54.85d					Workstation 80	
54.85e					Workstation 80	
54.85f					Workstation 80	
54.85g					Workstation 80	
54.85h					Workstation 80	
54.85i					Workstation 80	

SPACE LIST WORKSHEET - DETAIL: DEPARTMENT OF AUDITING

Room Name/Functional Area	OBSERVED ASSIGNMENTS				PROGRAM SUGGESTION	
	3FL - East	Staff Count	Room #	Herschler [NASF]	Herschler [NASF]	Comments
54.00 Department of Auditing						
54.85j					Workstation 80	
54.85k					Workstation 80	
54.85l					Workstation 80	
54.85m					Workstation 80	
54.85n					Workstation 80	
54.85o					Workstation 80	
54.85p					Workstation 80	
54.85q					Workstation 80	
54.85r					Workstation 80	
Circulation					1,248	Pro-Rated
Support						
54.87 Conference Room			1	286	250	
54.88 Conference Room			2	309	250	
54.89 Conference Room			3	203	250	
54.91 Print/Copy/etc. 2 Workstations	Quadrant I			99	350	Pro-Rated
54.92 Print/Copy/etc. 8 Workstations	Quadrant II			786	250	Pro-Rated
Print/Copy/etc. 2 Workstations	Quadrant III			169		Pro-Rated
Print/Copy/etc. 3 Workstations	Quadrant IV			345		Pro-Rated
54.98 Storage			1	140	300	
Storage			2	154		
Storage			3	115		
Storage			4	99		
Storage			5	83		
Storage			6	153		
Storage			7	512		
Department Circulation						
Circulation				3,653	2,568	Remaining in Department
Subtotal		101		21,169	15,406	

73% of Existing SF



SPACE LIST WORKSHEET - DETAIL: DEQ

		OBSERVED ASSIGNMENTS				PROGRAM SUGGESTION	
Room Name/ Functional Area		4FL -West	Staff Count	Room #	Herschler [NASF]	Herschler [NASF]	Comments
55.00	DEQ						
Administration							
55.01	Private Office	1	1	212	Office	200	
55.02	Private Office	1	2	83	Office	200	
55.03	Private Office	1	3	83	Office	200	
55.04	Private Office	1	4	369	Office	150	
55.05	Private Office	1	5	218	Office	150	
55.06	Private Office	1	6	209	Office	150	
55.07	Private Office	1	7	216	Office	150	
55.08	Private Office	1	8	125	Office	150	
55.09	Private Office	1	9	217	Office	150	
55.10	Private Office	1	10	139	Office	150	
55.11	Private Office	1	11	289	Office	150	
55.12	Private Office	1	12	173	Office	150	
55.13	Private Office	1	13	258	Office	150	
55.14	Private Office	1	14	188	Office	150	
55.15	Private Office	1	15	188	Office	150	
55.16	Private Office	1	16	162	Office	150	
55.17	Private Office	1	17	167	Office	150	
55.18	Private Office	1	18	202	Office	150	
55.19	Private Office	1	19	230	Office	150	
	Open Workstations	25 Occupants	Quadrant I	25	3,184		Pro-Rated
		Circulation			1,231		25% Circulation
	Open Workstations	14 Occupants	Quadrant II	14	1,577		Pro-Rated
		Circulation			523		25% Circulation
	Open Workstations	14 Occupants	Quadrant III	14	1,682		Pro-Rated
		Circulation			601		25% Circulation
	Open Workstations	20 Occupants	Quadrant IV	20	2,071		Pro-Rated

SPACE LIST WORKSHEET - DETAIL: DEQ

		OBSERVED ASSIGNMENTS				PROGRAM SUGGESTION	
Room Name/ Functional Area		4FL -West	Staff Count	Room #	Herschler [NASF]	Herschler [NASF]	Comments
55.00	DEQ						
Circulation					763		25% Circulation
55.21						Workstation	80
55.22						Workstation	80
55.23						Workstation	80
55.24						Workstation	80
55.25						Workstation	80
55.26						Workstation	80
55.27						Workstation	80
55.28						Workstation	80
55.29						Workstation	80
55.30						Workstation	80
55.31						Workstation	80
55.32						Workstation	80
55.33						Workstation	80
55.34						Workstation	80
55.35						Workstation	80
55.36						Workstation	80
55.37						Workstation	80
55.38						Workstation	80
55.39						Workstation	80
55.40						Workstation	80
55.41						Workstation	80
55.42						Workstation	80
55.43						Workstation	80
55.44						Workstation	80
55.45						Workstation	80
55.46						Workstation	80
55.47						Workstation	80
55.48						Workstation	80
55.49						Workstation	80
55.50						Workstation	80
55.51						Workstation	80
55.52						Workstation	80



Appendix B Detailed Programming Data

SPACE LIST WORKSHEET - DETAIL: DEQ

Room Name/ Functional Area	OBSERVED ASSIGNMENTS				PROGRAM SUGGESTION	
	4FL -West	Staff Count	Room #	Herschler [NASF]	Herschler [NASF]	Comments
55.00 DEQ						
55.53					Workstation 80	
55.54					Workstation 80	
55.55					Workstation 80	
55.56					Workstation 80	
55.57					Workstation 80	
55.58					Workstation 80	
55.59					Workstation 80	
55.60					Workstation 80	
55.61					Workstation 80	
55.62					Workstation 80	
55.63					Workstation 80	
55.64					Workstation 80	
55.65					Workstation 80	
55.66					Workstation 80	
55.67					Workstation 80	
55.68					Workstation 80	
56.69					Workstation 80	
55.70					Workstation 80	
55.71					Workstation 80	
55.72					Workstation 80	
55.73					Workstation 80	
55.74					Workstation 80	
55.75					Workstation 80	
55.76					Workstation 80	
55.77					Workstation 80	
55.78					Workstation 80	
55.79					Workstation 80	
55.80					Workstation 80	
55.81					Workstation 80	
55.82					Workstation 80	
55.83					Workstation 80	
55.84					Workstation 80	
55.85a					Workstation 80	
55.85b					Workstation 80	

SPACE LIST WORKSHEET - DETAIL: DEQ

Room Name/ Functional Area	OBSERVED ASSIGNMENTS				PROGRAM SUGGESTION	
	4FL -West	Staff Count	Room #	Herschler [NASF]	Herschler [NASF]	Comments
55.00 DEQ						
55.85c					Workstation 80	
55.85d					Workstation 80	
55.85e					Workstation 80	
55.85f					Workstation 80	
55.85g					Workstation 80	
55.85h					Workstation 80	
55.85i					Workstation 80	
Circulation					1,168	Pro-Rated
Support						
55.88 Conference Room			1	284	250	
55.89 Conference Room			2	355	350	
55.91 Print/Copy/etc. 4 Workstations	Quadrant I			509	350	Pro-Rated
Stacks				378		
Print/Copy/etc. 0 Workstations	Quadrant II			0		
Print/Copy/etc. 1 Workstation	Quadrant III			120		Pro-Rated
55.92 Print/Copy/etc. 2 Workstations	Quadrant IV			219	250	Pro-Rated
55.98 Storage			1	125	250	
Storage			2	165		
Stroage			3	98		
Storage			4	485		
Department Circulation						
Circulation				3,049	2,292	Remaining in Department



SPACE LIST WORKSHEET - DETAIL: DEQ

		OBSERVED ASSIGNMENTS				PROGRAM SUGGESTION	Comments
Room Name/ Functional Area		4FL -West	Staff Count	Room #	Herschler [NASF]	Herschler [NASF]	
55.00	DEQ						
Subtotal			92		21,147	13,750	

65% of Existing SF



Appendix B Detailed Programming Data

SPACE LIST WORKSHEET - DETAIL: DEPARTMENT OF REVENUE

Room Name/ Functional Area	OBSERVED ASSIGNMENTS				PROGRAM SUGGESTION	
	2FL - West	Staff Count	Room #	Herschler [NASF]	Herschler [NASF]	Comments
56.00 Department of Revenue						
Admin.						
56.01 Private Office		1	1	238	Office 200	
56.02 Private Office		1	2	213	Office 200	
56.03 Private Office		1	3	217	Office 150	
56.04 Private Office		1	4	289	Office 150	
56.05 Private Office		1	5	140	Office 150	
56.06 Private Office		1	6	188	Office 150	
56.07 Private Office		1	7	185	Office 150	
56.08 Private Office		1	8	383	Office 150	
56.09 Private Office		1	9	221	Office 150	
Open Workstations13 Occupants	Quadrant I	13		1,893		Pro-Rated
Circulation				728		25% Circulation
Open Workstations15 Occupants	Quadrant II	15		1,842		Pro-Rated
Circulation				737		25% Circulation
Open Workstations16 Occupants	Quadrant III	16		1,638		Pro-Rated
Circulation				890		25% Circulation
Open Workstations23 Occupants	Quadrant IV	23		3,831		Pro-Rated
Circulation				1,388		25% Circulation
56.11					Workstation 80	
56.12					Workstation 80	
56.13					Workstation 80	
56.14					Workstation 80	
56.15					Workstation 80	
56.16					Workstation 80	
56.17					Workstation 80	
56.18					Workstation 80	
56.19					Workstation 80	
56.20					Workstation 80	
56.21					Workstation 80	
56.22					Workstation 80	
56.23					Workstation 80	
56.24					Workstation 80	
56.25					Workstation 80	

SPACE LIST WORKSHEET - DETAIL: DEPARTMENT OF REVENUE

Room Name/ Functional Area	OBSERVED ASSIGNMENTS				PROGRAM SUGGESTION	
	2FL - West	Staff Count	Room #	Herschler [NASF]	Herschler [NASF]	Comments
56.00 Department of Revenue						
56.26					Workstation 80	
56.27					Workstation 80	
56.28					Workstation 80	
56.29					Workstation 80	
56.30					Workstation 80	
56.31					Workstation 80	
56.32					Workstation 80	
56.33					Workstation 80	
56.34					Workstation 80	
56.35					Workstation 80	
56.36					Workstation 80	
56.37					Workstation 80	
56.38					Workstation 80	
56.39					Workstation 80	
56.40					Workstation 80	
56.41					Workstation 80	
56.42					Workstation 80	
56.43					Workstation 80	
56.44					Workstation 80	
56.45					Workstation 80	
56.46					Workstation 80	
56.47					Workstation 80	
56.48					Workstation 80	
56.49					Workstation 80	
56.50					Workstation 80	
56.51					Workstation 80	



SPACE LIST WORKSHEET - DETAIL: DEPARTMENT OF REVENUE

		OBSERVED ASSIGNMENTS				PROGRAM SUGGESTION		
Room Name/ Functional Area		2FL - West	Staff Count	Room #	Herschler [NASF]	Herschler [NASF]		Comments
56.00	Department of Revenue							
56.52						Workstation	80	
56.53						Workstation	80	
56.54						Workstation	80	
56.55						Workstation	80	
56.56						Workstation	80	
56.57						Workstation	80	
56.58						Workstation	80	
56.59						Workstation	80	
56.60						Workstation	80	
56.61						Workstation	80	
56.62						Workstation	80	
56.63						Workstation	80	
56.64						Workstation	80	
56.65						Workstation	80	
56.66						Workstation	80	
56.67						Workstation	80	
56.68						Workstation	80	
56.69						Workstation	80	
56.70						Workstation	80	
56.71						Workstation	80	
56.72						Workstation	80	
56.73						Workstation	80	
56.74						Workstation	80	
56.75						Workstation	80	
56.76						Workstation	80	
56.77						Workstation	80	
Circulation						1,072		Pro-Rated
Support								



Appendix B Detailed Programming Data

SPACE LIST WORKSHEET - DETAIL: DEPARTMENT OF REVENUE

		OBSERVED ASSIGNMENTS			PROGRAM SUGGESTION	Comments
Room Name/ Functional Area		2FL - West	Staff Count	Room # Herschler [NASF]	Herschler [NASF]	
56.00	Department of Revenue					
56.81	Conference Room			1264	150	
56.82	Conference Room			2213	250	
56.83	Conference Room			3210	250	
56.84	Conference Room			4249	500	
56.91	Print/Copy/etc. 2 Workstations	Quadrant I		398	250	Pro-Rated
56.92	Print/Copy/etc. 3 Workstations	Quadrant II		368	250	Pro-Rated
56.93	Print/Copy/etc. 10 Workstations	Quadrant III		1,111	350	Pro-Rated
56.94	Print/Copy/etc. 2 Workstations	Quadrant IV		333	250	Pro-Rated
56.98	Storage		1	130	300	
	Storage		2	236		
	Storage		3	108		
	Storage		4	68		
	Storage		5	144		
	Storage		6	95		
	Storage		7	224		
	Department Circulation					
	Circulation			3,140	2,086	Remaining in Department
	Subtotal		73	22,312	12,518	

56% of Existing SF



SPACE LIST WORKSHEET - DETAIL: DEVELOPMENTAL DISABILITY

		OBSERVED ASSIGNMENTS				PROGRAM SUGGESTION	Comments
Room Name/ Functional Area		1FL - West	Staff Count	Room #	Herschler [NASF]	Herschler [NASF]	
57.00	Developmental Disability						
Administration							
57.01	Private Office		1	23	213	Office 200	
57.02	Private Office		1	24	366	Office 150	
57.03	Private Office		1	25	138	Office 150	
57.04	Private Office		1	25	130	Office 150	
57.05	Private Office		1	27	138	Office 150	
57.06	Private Office		2	28 & 29	220	Office 150	2 Occupants
57.07	Private Office		1	30	128	Office 150	
	Open Workstations 5 Occupants		5		638		Pro-Rated; previously vacant
57.21						Workstation 80	
57.22						Workstation 80	
57.23						Workstation 80	
57.24						Workstation 80	
57.25						Workstation 80	
	Open Workstations 2 Occupants		2		647		Pro-Rated
57.26						Workstation 80	
57.27						Workstation 80	
Circulation					278		Actual; previously vacant
						112	
Support							
57.81	Conference Room			6	208	250	
57.91	Print/Copy/etc. 2 Workstations				260	200	Pro-Rated
57.98	Storage			2	129	100	
Department Circulation							
Circulation					1,065		Remaining in Department
						464	
Subtotal			15		4,558	2,786	

61% of Existing SF



Appendix B Detailed Programming Data

SPACE LIST WORKSHEET - DETAIL: EMPLOYMENT AND TRAINING

		OBSERVED ASSIGNMENTS			PROGRAM SUGGESTION		
Room Name/ Functional Area		1FL - East	Staff Count	Room #	Herschler [NASF]	Herschler [NASF]	Comments
58.00 Employment and Training							
Administration							
58.01	Private Office		1	4	151	Office 200	
58.02	Private Office		2	7 & 8	134	Office 150	2 Occupants total
58.03	Private Office		1	12	177	Office 150	
58.04	Private Office		1	13	173	Office 150	
58.05	Private Office		1	14	171	Office 150	
58.06	Private Office		1	15	225	Office 150	
58.07	Private Office		1	16	288	Office 150	
58.08	Private Office		1	17	229	Office 150	
Open Workstations 8 Occupants			8		825		Pro-Rated
58.21						Workstation 80	
58.22						Workstation 80	
58.23						Workstation 80	
58.24						Workstation 80	
58.25						Workstation 80	
58.26						Workstation 80	
58.27						Workstation 80	
58.28						Workstation 80	
Circulation					323	128	Pro-Rated
Support							
58.81	Conference Room			2	265	250	
58.91	Print/Copy/etc. 1 Workstation				144	150	Pro-rated
58.98	Storage			1	98	80	
Department Circulation							
Circulation					1,003	500	Remaining in Department
Subtotal			17		4,206	2,998	

71% of Existing SF



SPACE LIST WORKSHEET - DETAIL: ENGINEERING

Room Name/ Functional Area	OBSERVED ASSIGNMENTS				PROGRAM SUGGESTION	
	4FL - East	Staff Count	Room #	Herschler [NASF]	Herschler [NASF]	Comments
59.00 Engineering						
Administration						
59.01 Private Office		1	1	288	Office 200	
59.02 Private Office		1	2	244	Office 200	
59.03 Private Office		1	3	131	Office 200	
59.04 Private Office		1	4	152	Office 150	
59.05 Private Office		1	5	152	Office 150	
59.06 Private Office		1	6	140	Office 150	
59.07 Private Office		1	7	143	Office 150	
59.08 Private Office		1	8	184	Office 150	
59.09 Private Office		1	9	237	Office 150	
59.10 Private Office		2	10, 11	298	Office 150	
59.11 Private Office		1	12	211	Office 150	
59.12 Private Office		1	13	119	Office 150	
59.13 Private Office		1	14	282	Office 150	
59.14 Private Office		1	15	413	Office 150	
Open Workstations	6 Occupants	Quadrant I	6	600		Pro-Rated
	Circulation			616		25% Circulation
Open Workstations	23 Occupants	Quadrant II	23	2,389		Pro-Rated
	Circulation			831		25% Circulation
Open Workstations	15 Occupants	Quadrant III	15	1,743		Pro-Rated
	Circulation			755		25% Circulation
Open Workstations	10 Occupants	Quadrant IV	10	1,665		Pro-Rated
	Circulation			665		25% Circulation
59.21					Workstation 80	
59.22					Workstation 80	
59.23					Workstation 80	
59.24					Workstation 80	
59.25					Workstation 80	
59.26					Workstation 80	

SPACE LIST WORKSHEET - DETAIL: ENGINEERING

Room Name/ Functional Area	OBSERVED ASSIGNMENTS				PROGRAM SUGGESTION	
	4FL - East	Staff Count	Room #	Herschler [NASF]	Herschler [NASF]	Comments
59.00 Engineering						
59.27					Workstation 80	
59.28					Workstation 80	
59.29					Workstation 80	
59.30					Workstation 80	
59.31					Workstation 80	
59.32					Workstation 80	
59.33					Workstation 80	
59.34					Workstation 80	
59.35					Workstation 80	
59.36					Workstation 80	
59.37					Workstation 80	
59.38					Workstation 80	
59.39					Workstation 80	
59.40					Workstation 80	
59.41					Workstation 80	
59.42					Workstation 80	
59.43					Workstation 80	
59.44					Workstation 80	
59.45					Workstation 80	
59.46					Workstation 80	
59.47					Workstation 80	
59.48					Workstation 80	
59.49					Workstation 80	
59.50					Workstation 80	
59.51					Workstation 80	
59.52					Workstation 80	
59.53					Workstation 80	
59.54					Workstation 80	
59.55					Workstation 80	
59.56					Workstation 80	
59.57					Workstation 80	
59.58					Workstation 80	
59.59					Workstation 80	
59.60					Workstation 80	



Appendix B Detailed Programming Data

SPACE LIST WORKSHEET - DETAIL: ENGINEERING

		OBSERVED ASSIGNMENTS				PROGRAM SUGGESTION	
Room Name/ Functional Area		4FL - East	Staff Count	Room #	Herschler [NASF]	Herschler [NASF]	Comments
59.00	Engineering						
59.61						Workstation 80	
59.62						Workstation 80	
59.63						Workstation 80	
59.64						Workstation 80	
59.65						Workstation 80	
59.66						Workstation 80	
59.67						Workstation 80	
59.68						Workstation 80	
59.69						Workstation 80	
59.70						Workstation 80	
59.71						Workstation 80	
59.72						Workstation 80	
59.73						Workstation 80	
59.74						Workstation 80	
	Circulation					864	Pro-Rated
	Support						
59.81	Conference Room			1	447	350	
59.82	Conference Room					250	
59.91	Print/Copy/etc. 8 Workstations				1,245	350	Pro-Rated
59.92	Print/Copy/etc. 1 Workstations				104	350	Pro-Rated
	Print/Copy/etc. 5 Workstations				1,195		Pro-Rated
	Open Storage				176		
	Print/Copy/etc. 3 Workstations				333		Pro-Rated
59.98	Storage			1	100	300	
	Storage			2	191		
	Stroage			3	854		

SPACE LIST WORKSHEET - DETAIL: ENGINEERING

		OBSERVED ASSIGNMENTS				PROGRAM SUGGESTION	
Room Name/ Functional Area		4FL - East	Staff Count	Room #	Herschler [NASF]	Herschler [NASF]	Comments
59.00	Engineering						
	Storage			4	671		
	Storage			5	658		
	Storage			6	24		
	Storage			7	112		
	Department Circulation						
	Circulation				2,971	1,807	Remaining in Department
	Subtotal		69		21,339	10,841	

51% of Existing SF



SPACE LIST WORKSHEET - DETAIL: ENTERPRISE TECHNOLOGY SERVICES

Room Name/ Functional Area	OBSERVED ASSIGNMENTS				PROGRAM SUGGESTION	
	1FL - East	Staff Count	Room #	Herschler [NASF]	Herschler [NASF]	Comments
60.00 Enterprise Technology Services						
Administration						
Open Workstations 13 Occupants		13		1,324		Pro-Rated
60.21					Workstation 80	
60.22					Workstation 80	
60.23					Workstation 80	
60.24					Workstation 80	
60.25					Workstation 80	
60.26					Workstation 80	
60.27					Workstation 80	
60.28					Workstation 80	
60.29					Workstation 80	
60.30					Workstation 80	
60.31					Workstation 80	
60.32					Workstation 80	
60.33					Workstation 80	
Circulation				537	208	Pro-Rated
Support						
60.91 Print/Copy/etc. 2 Workstation				286	250	Pro-rated
Department Circulation						
Circulation				359	300	Remaining in Department
Subtotal		13		2,506	1,798	

72% of Existing SF

SPACE LIST WORKSHEET - DETAIL: FIRE PREVENTION AND ELECTRIC SAFETY

Room Name/ Functional Area	OBSERVED ASSIGNMENTS				PROGRAM SUGGESTION	
	1FL - West	Staff Count	Room #	Herschler [NASF]	Herschler [NASF]	Comments
61.00 Fire Prevention and Electric Safety						
Administration						
61.01 Private Office		1	9	164	Office 200	
61.02 Private Office		1	10	141	Office 150	
61.03 Private Office		1	11	268	Office 150	
61.04 Private Office		1	12	141	Office 150	
61.05 Private Office		1	13	212	Office 150	
61.06 Private Office		2	14 & 15	139	Office 150	2 Occupants
61.07 Private Office		1	16	122	Office 150	
61.08 Private Office		1	17	165	Office 150	
61.09 Private Office		1	18	276	Office 150	
Open Workstations 6 Occupants		6		1,434		Pro-Rated
61.21					Workstation 80	
61.02					Workstation 80	
61.23					Workstation 80	
61.24					Workstation 80	
61.25					Workstation 80	
61.26					Workstation 80	
Circulation				638	96	Pro-Rated
Support						
61.81 Conference Room			4	239	300	
61.91 Print/Copy/etc. 2 Workstations				478	350	Pro-Rated
Department Circulation						
Circulation				1,014	525	Remaining in Department
Subtotal		16		5,431	3,151	

58% of Existing SF



Appendix B Detailed Programming Data

SPACE LIST WORKSHEET - DETAIL: GOVERNOR’S POLICY DEPARTMENT

		OBSERVED ASSIGNMENTS			PROGRAM SUGGESTION		Comments
Room Name/ Functional Area		2FL - East	Staff Count	Room #	Herschler [NASF]	Herschler [NASF]	
62.00	Governor’s Policy Department						Duplicated at Capitol Space List
Administration							
62.01	Private Office		1	26	240	Office 250	
62.02	Private Office		1	27	152	Office 200	
62.03	Private Office		1	29	155	Office 150	
62.04	Private Office		1	30	271	Office 150	
62.06	Private Office		1	31	306	Office 150	
Open Workstations 10 Occupants			10		1,275		Pro-Rated
62.21						Workstation 80	
62.22						Workstation 80	
62.23						Workstation 80	
62.24						Workstation 80	
62.25						Workstation 80	
62.26						Workstation 80	
62.27						Workstation 80	
62.28						Workstation 80	
62.29						Workstation 80	
62.30						Workstation 80	
Circulation					531	160	Pro-Rated
Support							
62.81	Conference				0	250	Pro-Rated
62.91	Print/Copy/etc. 2 Workstations				319	250	Pro-Rated
62.98	Storage			1	98	80	
Department Circulation							
Circulation					407	488	Remaining in Department
Subtotal			15		3,754	2,928	

78% of Existing SF



Appendix B Detailed Programming Data

SPACE LIST WORKSHEET - DETAIL: LAND QUALITY

		OBSERVED ASSIGNMENTS				PROGRAM SUGGESTION	
Room Name/ Functional Area		3FL - West	Staff Count	Room #	Herschler [NASF]	Herschler [NASF]	Comments
63.00	Land Quality						
Administration							
63.01	Private Office		1	8	205	Office 200	
63.02	Private Office		1	9	205	Office 150	
63.03	Private Office		1	10	145	Office 150	
63.04	Private Office		1	11	145	Office 150	
63.05	Private Office		1	12	137	Office 150	
63.06	Private Office		1	13	203	Office 150	
63.07	Private Office		1	14	224	Office 150	
63.08	Private Office		1	15	144	Office 150	
Open Workstations 20 Occupants			20		2,440		Pro-Rated
63.21						Workstation 80	
63.22						Workstation 80	
63.23						Workstation 80	
63.24						Workstation 80	
63.25						Workstation 80	
63.26						Workstation 80	
63.27						Workstation 80	
63.28						Workstation 80	
63.29						Workstation 80	
63.30						Workstation 80	
63.31						Workstation 80	
63.32						Workstation 80	
63.33						Workstation 80	
63.34						Workstation 80	
63.35						Workstation 80	
63.36						Workstation 80	
63.37						Workstation 80	
63.38						Workstation 80	
63.39						Workstation 80	
63.40						Workstation 80	
Circulation					1,098	320	Pro-Rated

SPACE LIST WORKSHEET - DETAIL: LAND QUALITY

		OBSERVED ASSIGNMENTS				PROGRAM SUGGESTION	
Room Name/ Functional Area		3FL - West	Staff Count	Room #	Herschler [NASF]	Herschler [NASF]	Comments
63.00	Land Quality						
Support							
63.81	Conference Room			2	225	300	
63.91	Print/Copy/etc. 7 Workstations				854	450	Pro-Rated
Open Work					380		
63.98	Storage			2	98	300	
Storage				3	102		
Storage				4	1,250		
Department Circulation							
Circulation					373	844	Remaining in Department
Subtotal			28		8,228	5,064	

62% of Existing SF



Appendix B Detailed Programming Data

SPACE LIST WORKSHEET - DETAIL: SCHOOL OF FINANCE LITIGATION

		OBSERVED ASSIGNMENTS			PROGRAM SUGGESTION		Comments
Room Name/ Functional Area		1FL - East	Staff Count	Room #	Herschler [NASF]	Herschler [NASF]	
64.00	School of Finance Litigation						
	Administration						
64.01	Private Office		1	1	189	Office 200	
64.02	Private Office		1	2	237	Office 150	
64.03	Private Office		1	3	236	Office 150	
	Support						
64.91	Print/Copy/etc. 2 Workstations					50	
	Department Circulation						
	Circulation				311	110	Remaining in Department
	Subtotal		3		973	660	

68% of Existing SF



SPACE LIST WORKSHEET - DETAIL: STATE LANDS DEPARTMENT

		OBSERVED ASSIGNMENTS				PROGRAM SUGGESTION	
Room Name/ Functional Area		3FL - West	Staff Count	Room #	Herschler [NASF]	Herschler [NASF]	Comments
65.00	State Lands Department						
Administration							
65.01	Private Office		1	1	164	Office 200	
65.02	Private Office		1	2	220	Office 200	
65.03	Private Office		1	3	329	Office 150	
65.04	Private Office		1	4	174	Office 150	
65.05	Private Office		1	5	211	Office 150	
65.06	Private Office		1	6	211	Office 150	
65.07	Private Office		1	7	174	Office 150	
65.08	Private Office		1	16	162	Office 150	
65.09	Private Office		1	17	162	Office 150	
Open Workstations 7 Occupants		Quadrant I	7		825		Pro-Rated
Circulation					506		25% Circulation
Open Workstations 14 Occupants		Quadrant II	14		1,584		Pro-Rated
Circulation					679		25% Circulation
Open Workstations 11 Occupants		Quadrant III	11		1,238		Pro-Rated
Circulation					563		25% Circulation
65.21						Workstation 80	
65.22						Workstation 80	
65.23						Workstation 80	
65.24						Workstation 80	
65.25						Workstation 80	
65.26						Workstation 80	
65.27						Workstation 80	
65.28						Workstation 80	
65.29						Workstation 80	
65.30						Workstation 80	
65.31						Workstation 80	
65.32						Workstation 80	
65.33						Workstation 80	
65.34						Workstation 80	
65.35						Workstation 80	

SPACE LIST WORKSHEET - DETAIL: STATE LANDS DEPARTMENT

		OBSERVED ASSIGNMENTS				PROGRAM SUGGESTION	
Room Name/ Functional Area		3FL - West	Staff Count	Room #	Herschler [NASF]	Herschler [NASF]	Comments
65.00	State Lands Department						
65.36						Workstation 80	
65.37						Workstation 80	
65.38						Workstation 80	
65.39						Workstation 80	
65.40						Workstation 80	
65.41						Workstation 80	
65.42						Workstation 80	
65.43						Workstation 80	
65.44						Workstation 80	
65.45						Workstation 80	
65.46						Workstation 80	
65.47						Workstation 80	
65.48						Workstation 80	
65.49						Workstation 80	
65.50						Workstation 80	
65.51						Workstation 80	
65.52						Workstation 80	
Circulation						512	Pro-Rated
Support							
65.81	Conference Room			1	289	250	
65.82	Conference Room			3	370	350	
65.91	Print/Copy/etc. 6 Workstations	Quadrant I			692	350	Pro-Rated
65.92	Print/Copy/etc. 4 Workstations	Quadrant II			452	250	Pro-Rated
	Print/Copy/etc. 4 Workstations	Quadrant III			450		Pro-Rated
65.98	Storage				201	300	Pro-Rated
	Storage				1,088		Pro-Rated
Department Circulation							



Appendix B Detailed Programming Data

SPACE LIST WORKSHEET - DETAIL: STATE LANDS DEPARTMENT

Room Name/ Functional Area	OBSERVED ASSIGNMENTS				PROGRAM SUGGESTION	
	3FL - West	Staff Count	Room #	Herschler [NASF]	Herschler [NASF]	Comments
65.00 State Lands Department						
Circulation				2,676	1,204	Remaining in Department
Subtotal		41		13,420	7,226	

54% of Existing SF

SPACE LIST WORKSHEET - DETAIL: VICTIM SERVICES

Room Name/ Functional Area	OBSERVED ASSIGNMENTS				PROGRAM SUGGESTION	
	1FL - West	Staff Count	Room #	Herschler [NASF]	Herschler [NASF]	Comments
66.00 Victim Services						
Administration						
66.01 Private Office		1	7	213	Office 200	
66.02 Private Office		1	8	138	Office 150	
Open Workstations 6 Occupants		6		1,038		Pro-Rated
66.21					Workstation 80	
66.22					Workstation 80	
66.23					Workstation 80	
66.24					Workstation 80	
66.25					Workstation 80	
66.26					Workstation 80	
Circulation				656	96	Pro-Rated
Support						
66.81 Conference Room			2	215	150	
66.82 Conference Room			3	282	300	
66.91 Print/Copy/etc. 6 Workstations				923	350	Pro-Rated
Department Circulation						
Circulation				583	345	Remaining in Department
Subtotal		8		4,048	2,071	

51% of Existing SF



SPACE LIST WORKSHEET - DETAIL: VOCATIONAL REHABILITATION OFFICE

			OBSERVED ASSIGNMENTS			PROGRAM SUGGESTION		
Room Name/Functional Area			1FL - East	Staff Count	Room #	Herschler [NASF]	Herschler [NASF]	Comments
67.00	Vocational Rehabilitation Office							
Administration								
67.01	Private Office		1	5	206	Office	200	
67.02	Private Office		1	6	195	Office	150	
67.03	Private Office		1	9	123	Office	150	
67.04	Private Office		1	10	123	Office	150	
67.05	Private Office		1	11	122	Office	150	
67.06	Private Office		1	18	297	Office	150	
67.07	Private Office		1	19	175	Office	150	
Open Workstations		13 OcCUPants	13		1,790			Pro-Rated
67.21						Workstation	80	
67.22						Workstation	80	
67.23						Workstation	80	
67.24						Workstation	80	
67.25						Workstation	80	
67.26						Workstation	80	
67.27						Workstation	80	
67.28						Workstation	80	
67.29						Workstation	80	
67.30						Workstation	80	
67.31						Workstation	80	
67.32						Workstation	80	
67.33						Workstation	80	
Circulation			772				208	Pro-Rated
Support								
67.81	Conference Room			1	504		500	
67.91	Print/Copy/etc.	2 Workstations			189		150	
67.98	Storage			2	131		100	
Department Circulation								

SPACE LIST WORKSHEET - DETAIL: VOCATIONAL REHABILITATION OFFICE

		OBSERVED ASSIGNMENTS				PROGRAM SUGGESTION	
Room Name/Functional Area		1FL - East	Staff Count	Room #	Herschler [NASF]	Herschler [NASF]	Comments
67.00	Vocational Rehabilitation Office						
Circulation		714				620	Remaining in Department
Subtotal		20		5,341		3,718	

70% of Existing SF



Appendix B Detailed Programming Data

SPACE LIST WORKSHEET - DETAIL: WORKFORCE DEVELOPMENT

		OBSERVED ASSIGNMENTS				PROGRAM SUGGESTION	
Room Name/ Functional Area		2FL East	Staff Count	Room #	Herschler [NASF]	Herschler [NASF]	Comments
68.00	Workforce Development						
Administration							
68.01	Private Office		1	13	118	Office 200	
68.02	Private Office		1	14	117	Office 200	
68.03	Private Office		1	15	117	Office 150	
68.04	Private Office		1	16	106	Office 150	
68.05	Private Office		1	17	108	Office 150	
68.06	Private Office		1	18	140	Office 150	
68.07	Private Office		1	19	109	Office 150	
68.08	Private Office		1	20	214	Office 150	
68.08	Private Office		1	21	121	Office 150	
68.09	Private Office		1	22	121	Office 150	
68.10	Private Office		1	23	121	Office 150	
68.11	Private Office		1	24	115	Office 150	
68.12	Private Office		1	25	121	Office 150	
68.13	Private Office		1	28	180	Office 150	
Open Workstations 6 OcCUPants		Quadrant I	6		801		Pro-Rated
Circulation					356		25% Circulation
Open Workstations 13 OcCUPants		Quadrant II	13		2,560		Pro-Rated
Circulation					919		25% Circulation
68.21						Workstation 80	
68.22						Workstation 80	
68.23						Workstation 80	
68.24						Workstation 80	
68.25						Workstation 80	
68.26						Workstation 80	
68.27						Workstation 80	
68.28						Workstation 80	
68.29						Workstation 80	
68.30						Workstation 80	
68.31						Workstation 80	
68.32						Workstation 80	
68.33						Workstation 80	

SPACE LIST WORKSHEET - DETAIL: WORKFORCE DEVELOPMENT

		OBSERVED ASSIGNMENTS				PROGRAM SUGGESTION	
Room Name/ Functional Area		2FL East	Staff Count	Room #	Herschler [NASF]	Herschler [NASF]	Comments
68.00	Workforce Development						
68.34						Workstation 80	
68.35						Workstation 80	
68.36						Workstation 80	
68.37						Workstation 80	
68.38						Workstation 80	
68.39						Workstation 80	
Circulation						304	Pro-Rated
Support							
68.81	Conference Room			3	169	250	
68.82	Conference Room			4	532	500	
68.91 Print/Copy/etc. 2 Workstations		Quadrant I			267	250	Pro-Rated
Print/Copy/etc. 1 Workstations		Quadrant II			197		Pro-Rated
Department Circulation							
Circulation					478	1,005	Remaining in Department
Subtotal		33			8,087	6,029	

75% of Existing SF



SPACE LIST WORKSHEET - DETAIL: VACANT

		OBSERVED ASSIGNMENTS				PROGRAM SUGGESTION	
Room Name/ Functional Area		1FL - East	Staff Count	Room #	Herschler [NASF]	Herschler [NASF]	Comments
69.00	Vacant						
	Administration						
	Open Workstations14 OcCUPants		14		1,432		Pro-Rated; Apparent OcCUPancy
	Circulation				546		25% Circulation
	Support						
69.91	Print/Copy/etc. 2 Workstations				204		Pro-rated
	Department Circulation						
	Circulation				442		Remaining in Department
	Subtotal		14		2,624	0	

0% of Existing SF



SPACE LIST WORKSHEET - COMMON SPACES

		OBSERVED ASSIGNMENTS				PROGRAM SUGGESTION	
	Room Name/ Functional Area	Level	Staff Count	Room #	Herschler [NASF]	Herschler [NASF]	Comments
70.00	Common Spaces						
	Common Spaces	1FL					
	Reception - 2 Workstations		2		303		
70.21						Workstation	80
70.22						Workstation	80
70.31	Data Center				2,201	2,500	
70.32	Vestibule				69	70	
70.33	Support				303	300	
70.34	Server Equipment Repair				1,027	1,000	
70.81	Auditor Training Room				1,079	1,000	
70.82	Storage				113	100	
70.83	Hearing Room				2,226	1,500	Conf. Rm.
70.84	AV/ Storage				223	100	
	AV/ Storage				99		
	Support						
70.91	Break/ Kitchenette				460	600	
	Subtotal				8,102	7,330	
	Common Spaces	2FL					
	Support						
70.92	Break/ Kitchenette				386	250	
	Subtotal				386	250	

SPACE LIST WORKSHEET - COMMON SPACES

		OBSERVED ASSIGNMENTS				PROGRAM SUGGESTION	
	Room Name/ Functional Area	Level	Staff Count	Room #	Herschler [NASF]	Herschler [NASF]	Comments
70.00	Common Spaces						
	Common Spaces	3FL					
	Support						
70.93	Break/ Kitchenette				447	250	
	Subtotal				447	250	
	Common Spaces	4FL					
	Support						
70.94	Break/ Kitchenette				446	250	
	Subtotal				446	250	

Grand Total [Levels 1-4]	2	9,381	8,080
-----------------------------	---	-------	-------

