



SITE AND LANDSCAPE

DESIGN GUIDELINES AND IMPERATIVES

MOCA

WORKING DRAFT

Significant Landscape Features

A study of the history of the Wyoming State Capitol Site by Heritage Landscapes LLC in October 2014 identified nine significant landscape features that have characterized the grounds of the Capitol through time.

- Preservation of Views to the Capitol Dome
- Capitol Square demarcation by 23rd Street, Carey Avenue, 24th Street and Central Avenue.
- Lawn panel bounded by perimeter trees and walks
- Interior walks that circumnavigate the Capitol Building
- Cardinal Entry walks that originate at the street side walkway South, West and North
- Sculpture and Monuments
- Southwest and Southeast corner bench niches
- Groves of evergreen trees at the four corners of the site
- Restrained use of planting beds

Design Guideline: Historic site elements that have survived time provide a guide for future site design and development.



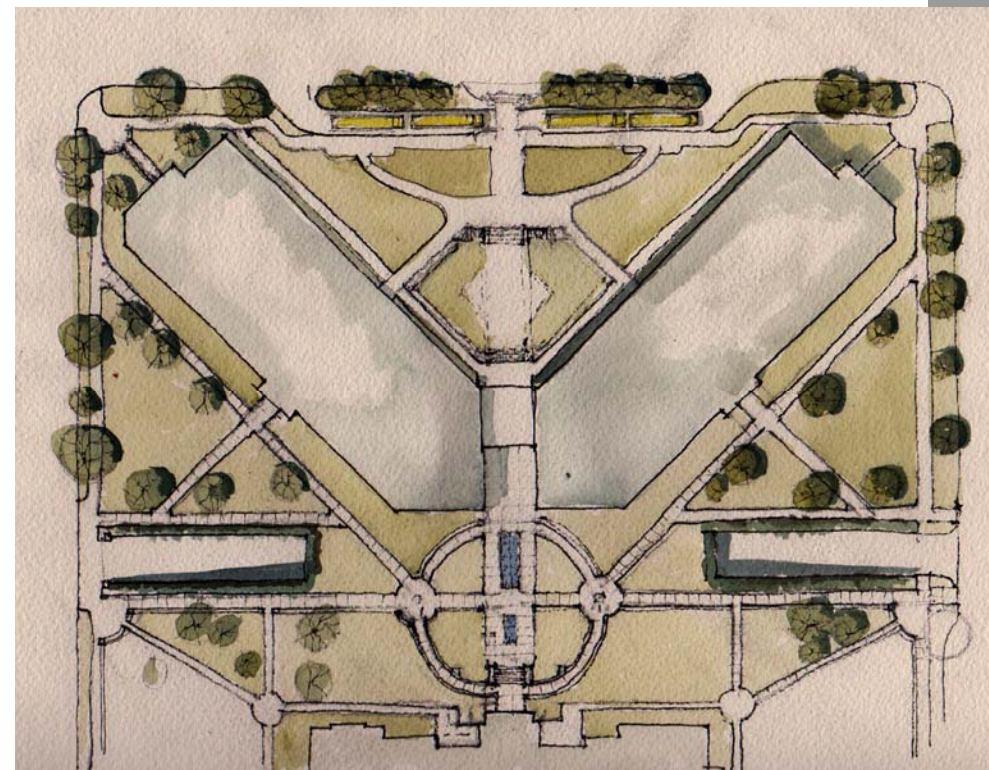
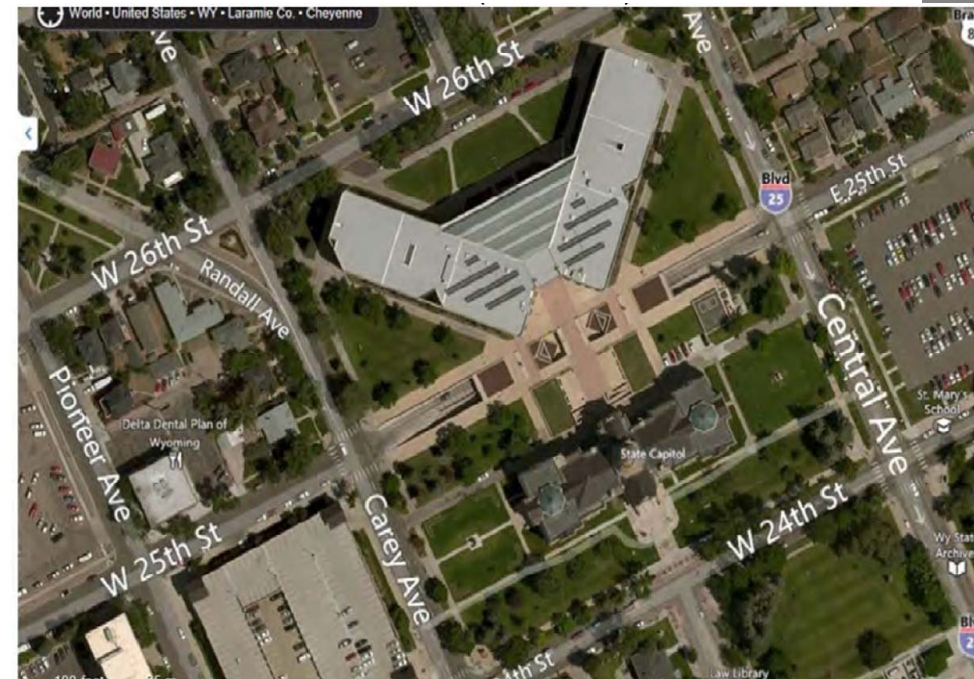
Pedestrian Walks

Pedestrian walks on the Capitol Campus should be placed to support logical pedestrian paths from intersections and street crossings to building entry locations. In many cases these paths were identified and used in Historic site configurations.

Historic Configurations

A number of historic pedestrian circulation configurations have been documented. Some of these date to periods before automobiles and relate to horse drawn transportation. Over time the site configuration has been adjusted to accommodate vehicle circulation patterns and signaled intersections. Other pedestrian configurations have been used over time including the current design. The South walk from the Capitol to 24th Street has always been an extension of Capitol Avenue. The West and North Entry walks have also been very prominent in historic site plans.

Design Guideline: Pedestrian pathways should support safe and efficient site circulation and provide appropriate visual connections to the Capitol Building.



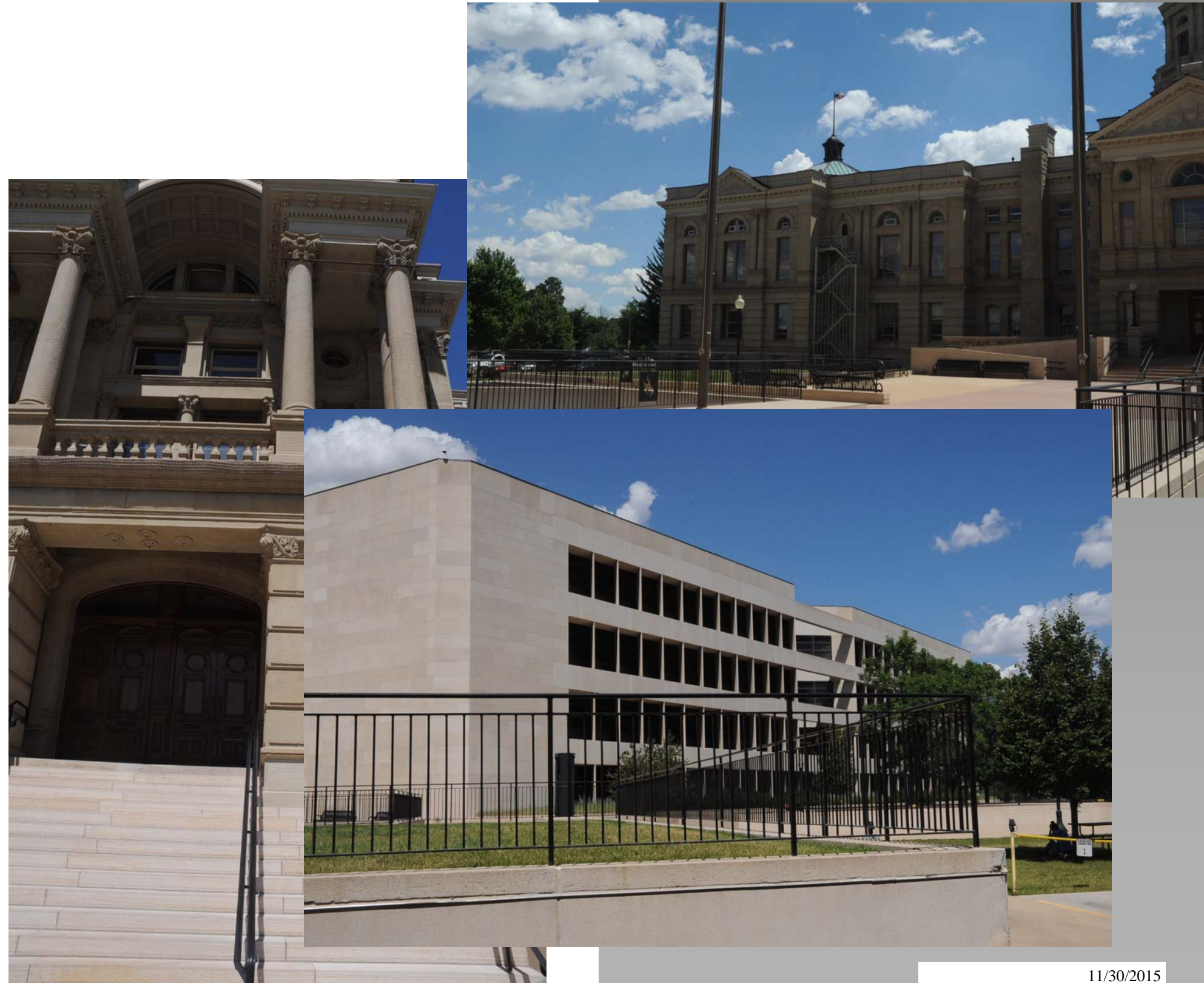
Existing Guardrails

Guardrails are an essential element when the fall hazard exceeds 30". These elements can be beautiful elements in the landscape or visually disruptive and intrusive. Many of the Guardrails on the Capitol Square property are intrusive and poorly designed. These range from the "wall" elements at the ADA ramps in the vicinity of the North Stair to the steel railings at the light wells in the Herschler connector.

New and Replacement Guardrails

Guardrails will continue to be required in some locations on Capitol Square. Care in grading and transitional stepping can significantly reduce the extend of required railings and careful design can create much more appropriate designed when guard railing is required.

Design Guideline: Site grading strategies should include grading that reduces the visual impact of guardrails. Required guardrails should be appropriate for the historic context in which they are placed.



Surface connection to the Herschler Building

The area between the Herschler Building and the Capitol is primarily concrete paving and other hardscaping elements. Existing ramp access to the First floor of the Capitol exists at the present time. This access should be maintained as part of the building accessibility strategy.

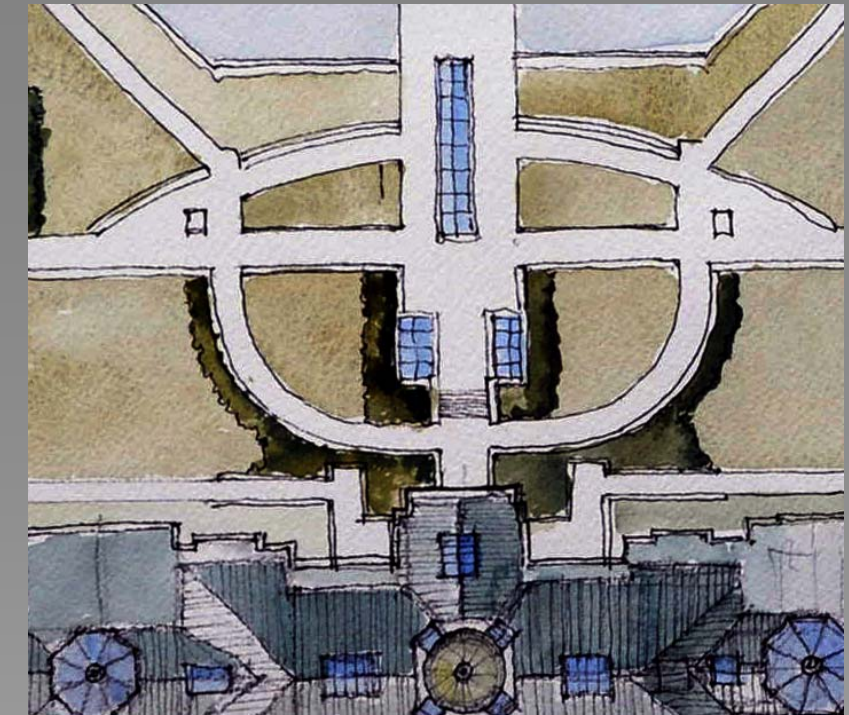
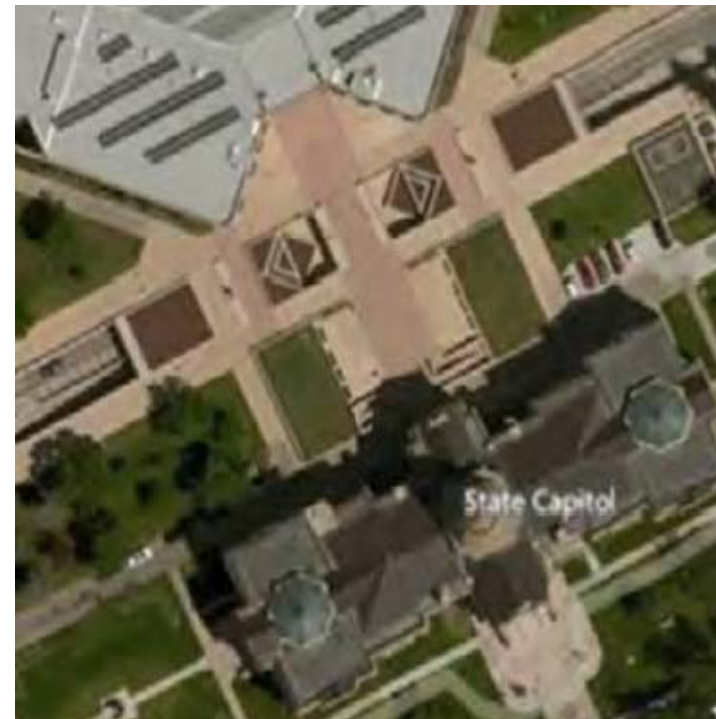
Skylights

The below grade Capitol Extension Design will include skylight elements that will be incorporated into the design of the surface connection between the Capitol and the Herschler Building.

Green Space

Much of the area that is paving or decorative gravel should be returned to green space. Much of this should be simple lawn areas. Grade change elements may be augmented with low hedges or other dense plantings to screen railings or walls.

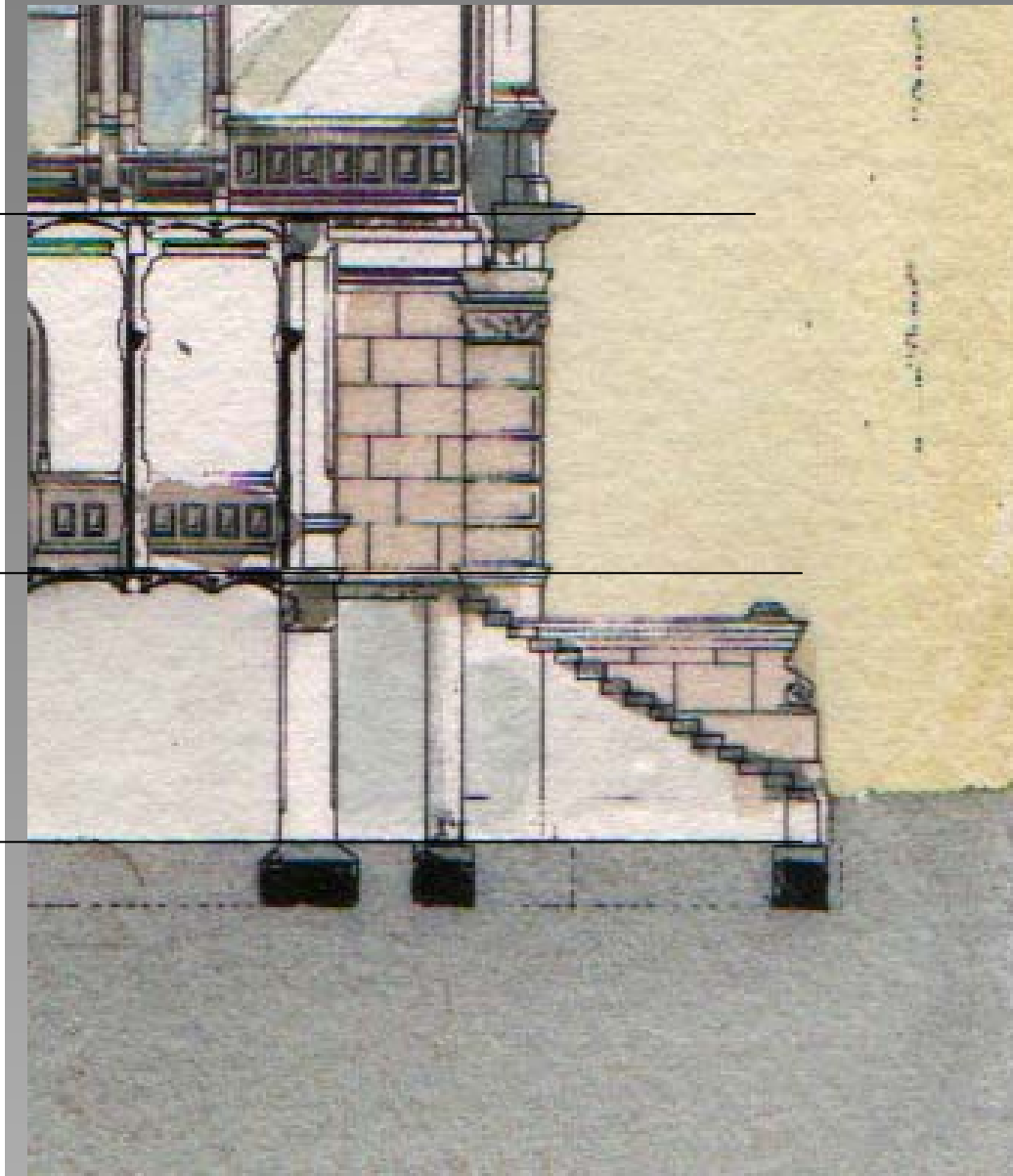
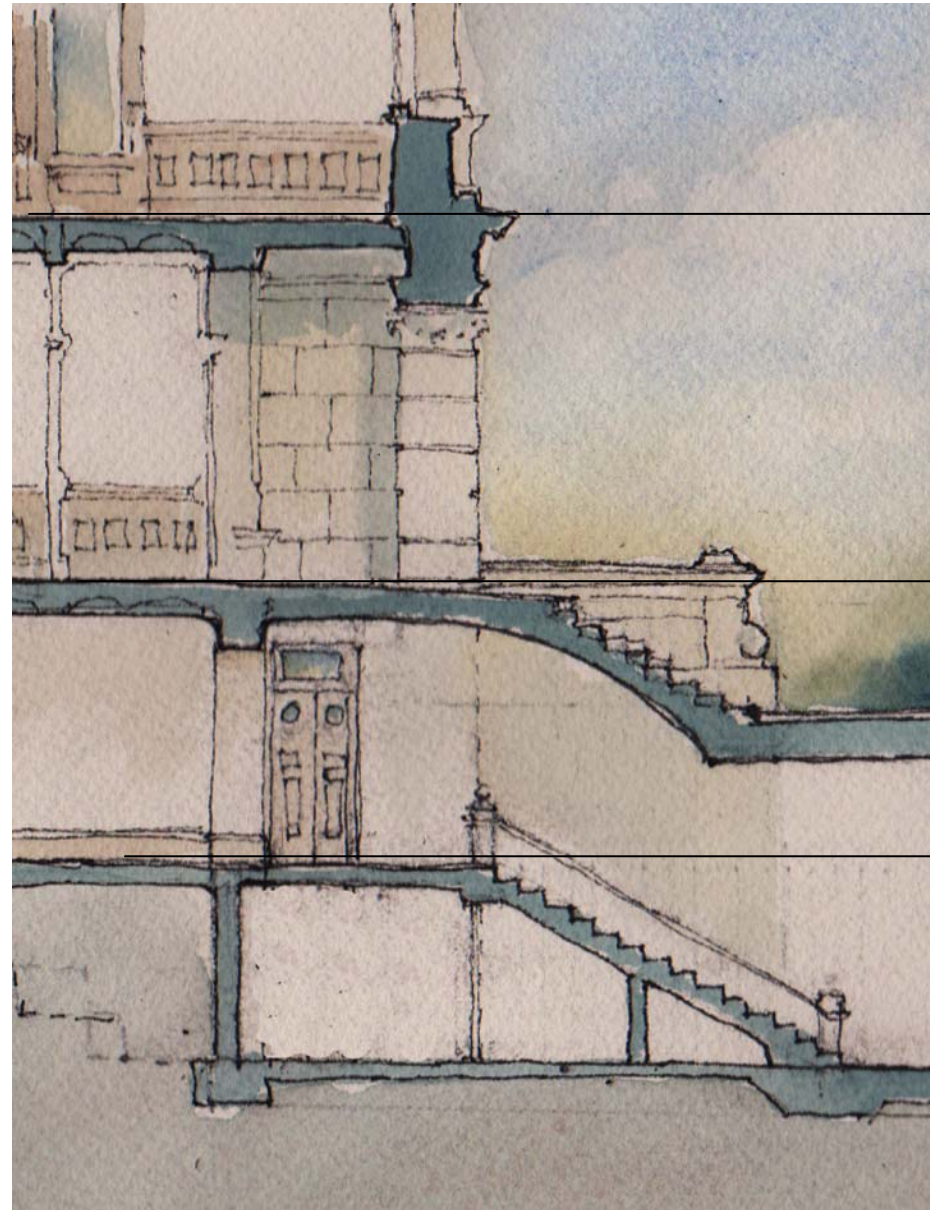
Design Guideline: The connection between the Herschler Building and the Capitol should be simple and accommodate all required design elements.



North Steps Configuration

The North Steps of the Capitol have been significantly altered by relatively recent additions to the Capitol Campus. The addition of the Herschler Building in 1983 changed the height of the steps and the historic relationship of the steps to the site. Later additions of the ADA ramps changed the location and character of the cheek walls that support the historic stairs.

Cheek wall of the historic stairs have been relocated and raised in elevation to accommodate the existing ramp system. Cheek walls for steps are an important architectural feature on three sides of the Capitol. Careful design and placement of the rebuilt cheek walls to accommodate new ramping and walk way systems is required. The relationship of the first riser to the base of the cheek wall and carved stone is also important. Cheek walls should be incorporated in the new design.



Design Guideline: The Design of the North Stair should enhance the North Entry to the Capitol and serve the current requirements for accessibility.

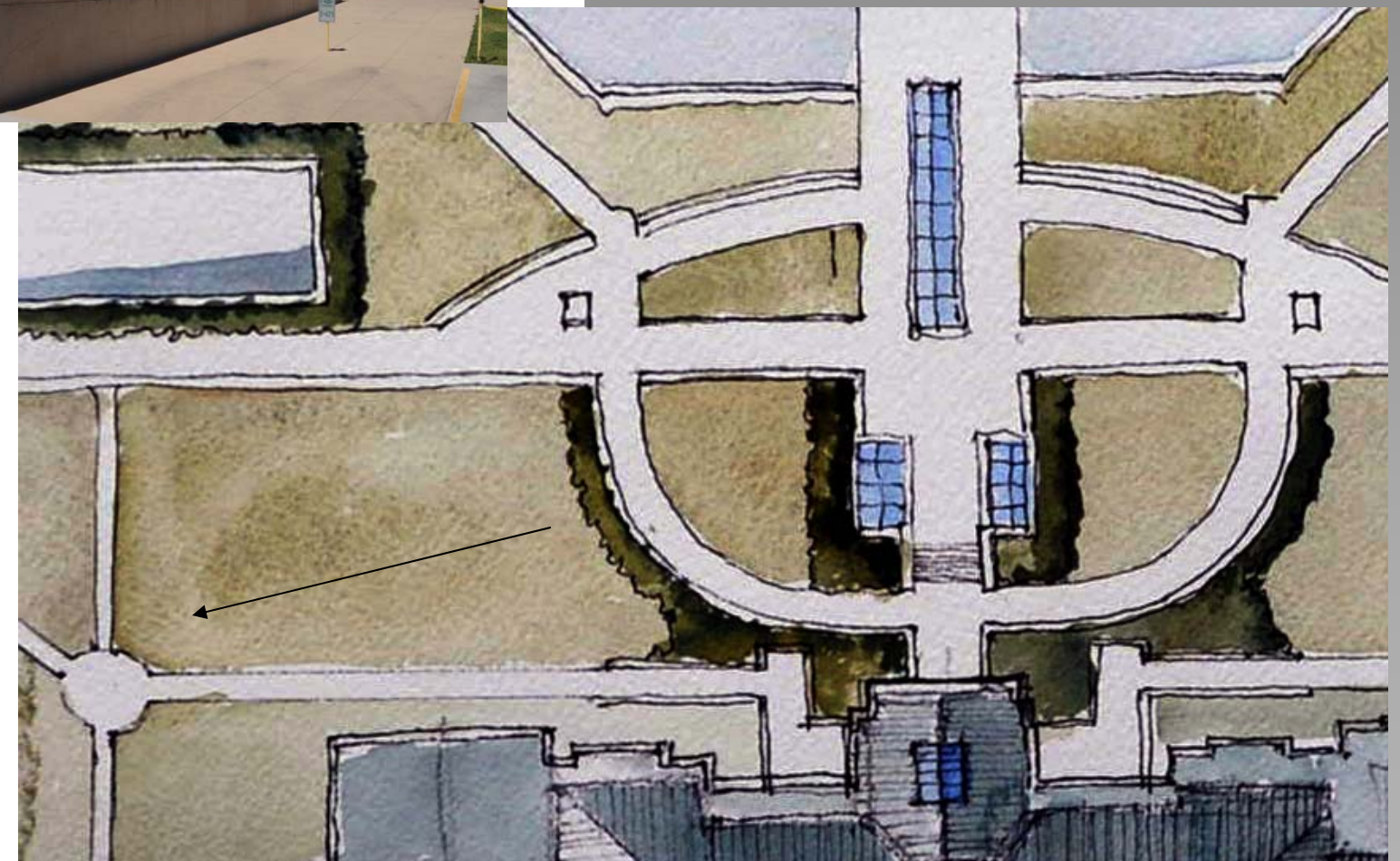
Existing Grade Transitions

Many different elements have been used to create grade transitions on the existing site. These include sloping pavement, retaining walls, roof parapets, and steps. Many of these transitions are high enough to require guardrails for fall protection. These rails and walls are visually distraction in the views to and from the Capitol.

Increased Open Lawn Area

The area between the Herschler Building and the Capitol is the area most affected by these grade transitions. Required grade changes should be made with gently sloping lawn areas that minimize stepping. Where stems in the landscaping are requires these should be kept low to avoid a fall hazard requiring a guardrail. Sloping and stepping of the landscape should be incorporated in the structural design of the roof of the below grade extension.

Design Guideline: required grade transitions should be carefully planned to minimize visual impact and reduce fall hazard requiring guardrails.



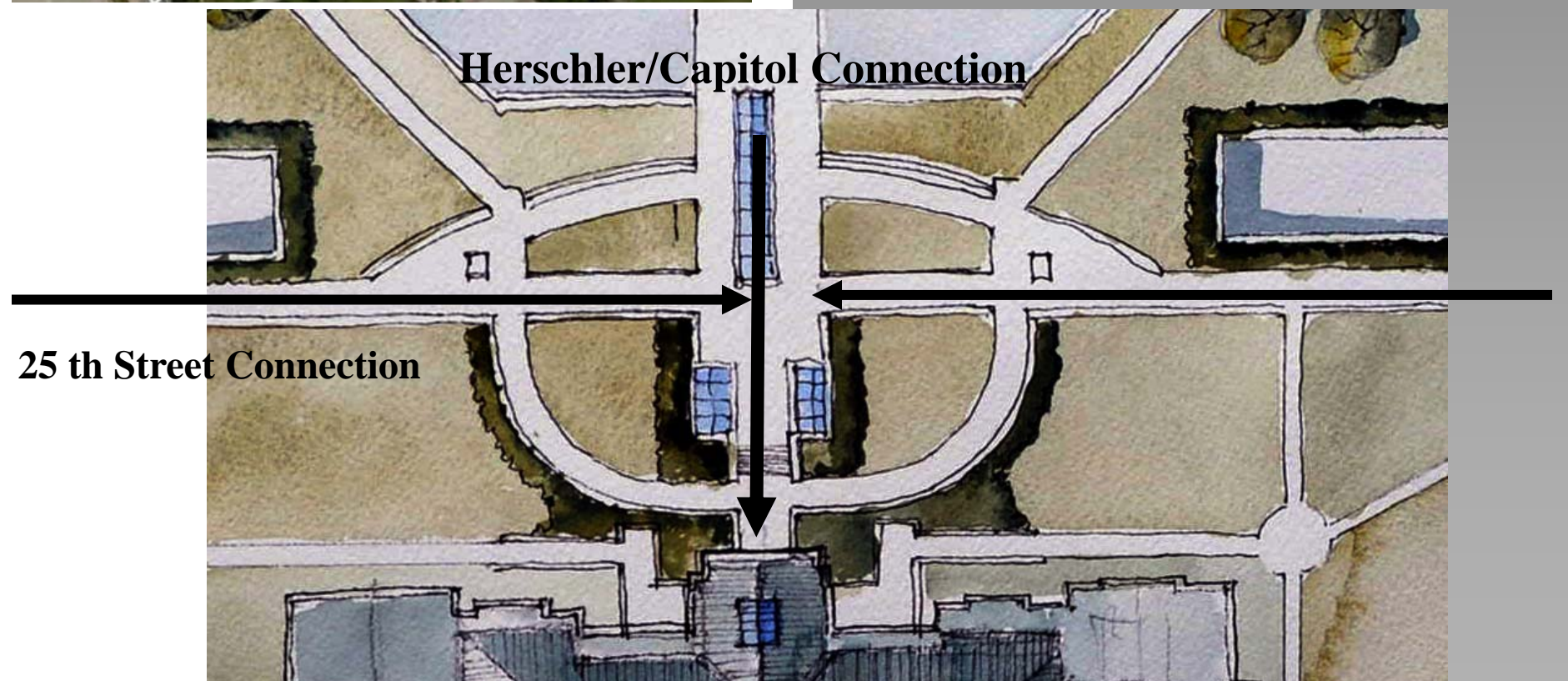
Existing Plaza Connection

The Plaza which forms the surface connection between the Capitol Building and the Herschler Building is an important functional pedestrian connection. The current plaza also leads pedestrians from Carey and Central along the historic path of 25 th Street to the Herschler South entry and the Capitol North entry. All of these functional relationships are important and should continue.

Plaza Viewed from Capitol

The plaza is very visible from all North facing windows on Level One and above in the Capitol. In addition to these views, large windows in the restored Supreme Court Chamber will view direction onto the plaza with the center of the room on axis with the center of the Plaza. Symmetry of plan will enhance this view and support the classical design concept of the Capitol and the new Herschler Building facade. New south windows in the Herschler Building will also view the Plaza from above.

Design Guideline: Functional components of the plaza connection between the Capitol and the Herschler Building should be maintained. The new plaza design should incorporate more green space and other required func-

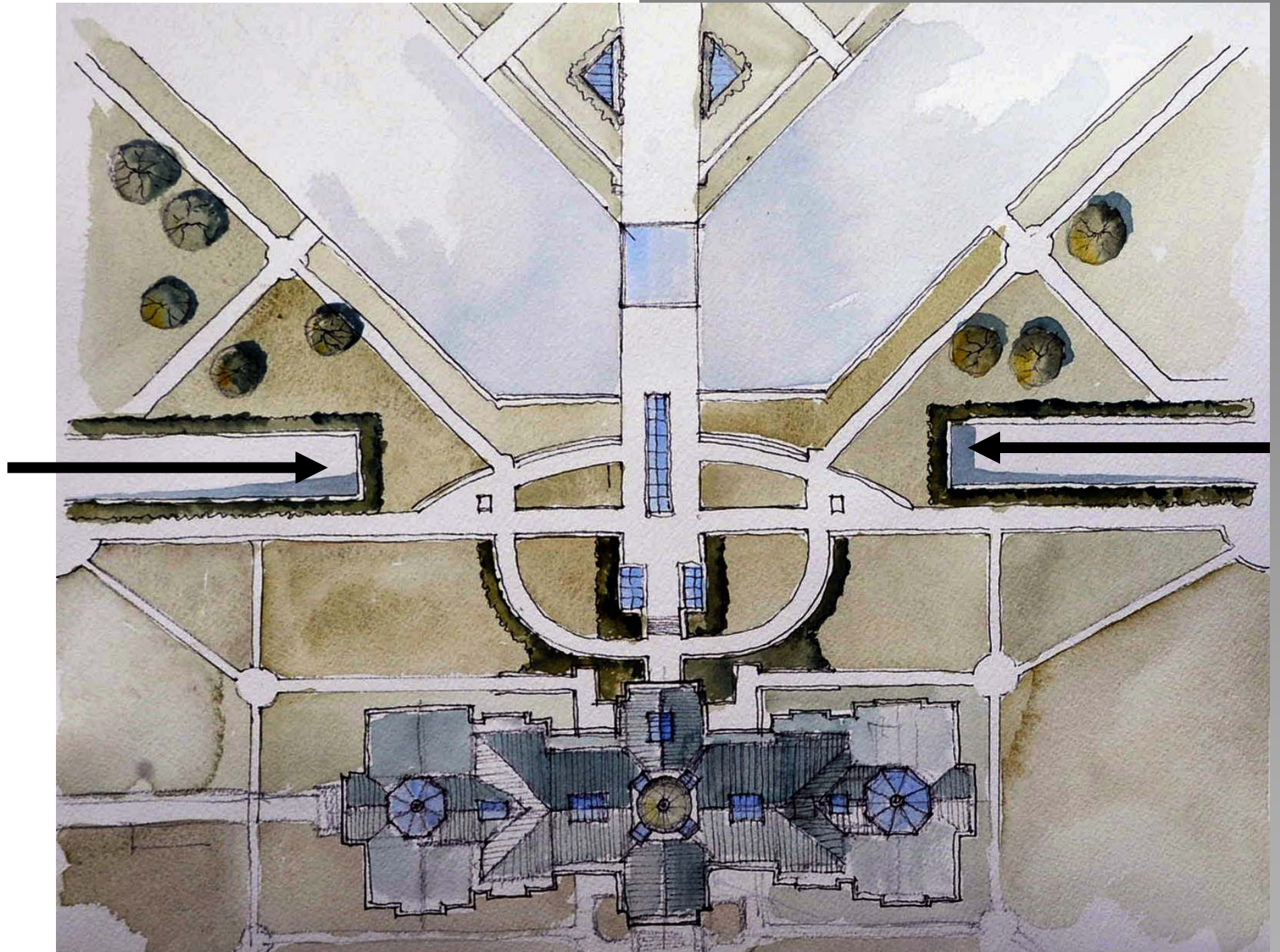


Existing Vehicle Ramps

The existing vehicle ramps to the parking and delivery areas below the Plaza and Herschler Building should be used in the new design for the campus. Circulation is currently two way on each ramp leading to signaled intersections on Carey and Central Avenues.

Internal circulation for parking should be evaluated with the new configuration of space in the Below grade Capitol extension. Security of the parking structure should also be considered in the evaluation of the parking circulation. The design of a deceleration lane on Central should also be reviewed. Discussions with the Wyoming Department of Transportation and the City of Cheyenne should be continued to clarify the current condition and future signaling at the 24th Street intersections at Central and Carey.

Design Guideline: Existing vehicle ramps should remain in the present location. Enhanced landscape and guardrail configurations should be included to reduce the visual impact of these ramps on the simple landscape of the Capitol Square



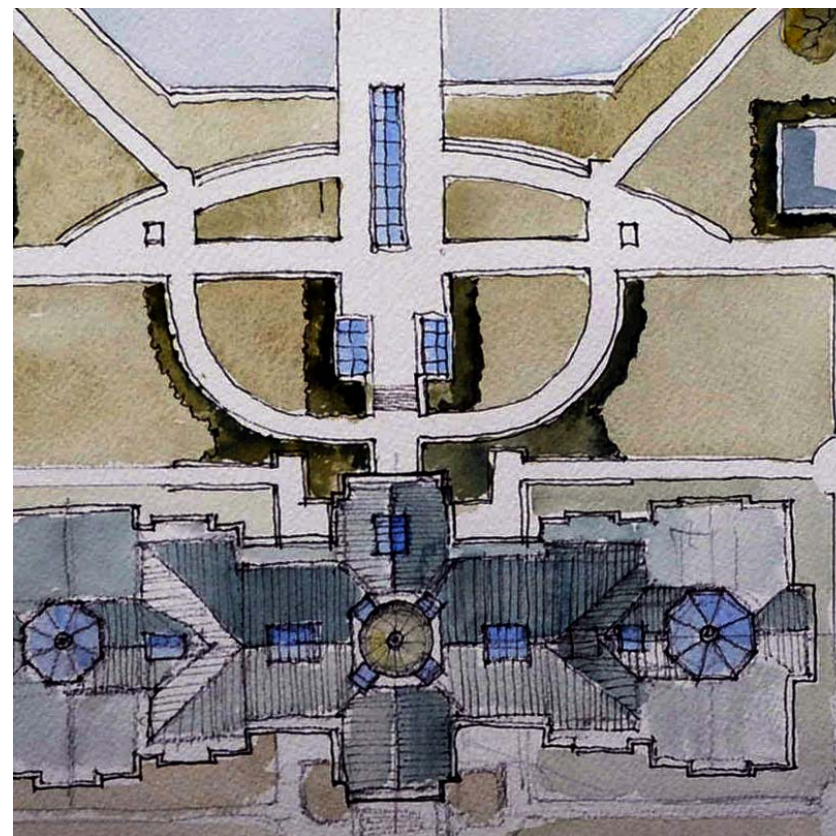
Existing Ramps and Access

One of the three principles for the restoration of the Capitol is improved public access. This desire to make the Capitol “The People’s House” includes ready access for all. Site and building modifications should improve access including ADA access to various doors and levels of the building.

Ramps currently exist serving three entry doors to the Capitol. Ramps to the Garden Level exist in the South door East of the Grand Stair and the North Level West of the Steps to Level One on the North. Newly constructed ramps also serve the North Entrance at Level One.

All of these locations for ADA entry should be preserved either through ramping or barrier free walks

Design Guideline: Existing entry points to the Capitol served by ramps should be preserved and enhanced. All surface entry points to the Herschler Building should be barrier free.



Vistas to the Capitol

Vistas to the Capitol from various locations around the City of Cheyenne have been open or blocked throughout a variety of landscape planning campaigns. The vista from the South from Capitol Ave. has been narrowed by large evergreen trees on either side of the South walk. Dense plantings have partially blocked many of the vistas originally planned for the Capitol and Capitol Grounds.

The vista from the North is almost entirely blocked by the Herschler Building. The Herschler Building was carefully planned to preserve the vista approaching the Capitol down Randall Avenue. This vista has also been obscured to various levels at various times by plantings.

Vistas are often enhanced by properly placed trees and other plantings. The Corner plantings were an attempt to frame or enhance vistas.

Design Guideline: Vistas should be improved and enhanced by landscape plantings and other site improvements. Long term planting strategies should be developed as mature trees become diseased or require removal.



Existing Planting

The existing plantings on the Capitol and Herschler sites have been carefully identified and the condition of trees.

The historic plans and photographs have shown various planting plans and major tree locations. Many trees planted at various time during the life of the capitol have been removed as they have reached maturity and become diseased.

The design concepts discussed in these guidelines are long term. New plantings should be incorporated into the long term concepts that incorporate simple lawn panels and more simplified tree planting strategy.

Trees that have been identified by the arborist as trees at risk or diseased should be removed. All other trees should be protected and preserved during all phases of demolition and construction.

Design Guideline: Plantings around the Capitol should be simple and respect major view corridors. Existing trees should be preserved except those identified by the arborist as diseased or unsafe.

Tree Codes Referenced for Landscape Plans			
Code	Botanical Name	Common Name	Category
Al	Acer x freemanii	Freeman maple	Deciduous tree
Ag	Aesculus glabra	Ohio buckeye	Deciduous tree
An	Acer negundo	Boxelder maple	Deciduous tree
Ar	Acer rubrum	Red maple	Deciduous tree
Asi	Acer saccharinum	Silver maple	Deciduous tree
At	Acer tataricum	Tartar maple	Ornamental tree
Bl	Betula lenta	Yellow birch	Deciduous tree
Ca	Crataegus ambigua	Russian hawthorn	Ornamental tree
Co	Celtis occidentalis	Common Hackberry	Deciduous tree
Fp	Fraxinus pennsylvanica	Green ash	Deciduous tree
Gb	Ginkgo biloba	Ginkgo	Deciduous tree
Gd	Gymnocladus dioica	Kentucky coffeetree	Deciduous tree
Gli	Gleditsia triacanthos inermis	Thornless honeylocust	Deciduous tree
Ms	Malus sylvestris	Flowering crabapple	Ornamental tree
Pc	Prunus cerasifera	Flowering plum	Ornamental tree
Pd	Populus deltoides	Eastern cottonwood	Deciduous tree
Pia	Pinus aristata	Bristlecone pine	Coniferous tree
Pic	Pinus contorta	Lodgepole pine	Coniferous tree
Pie	Pinus edulis	Pinyon pine	Coniferous tree
Pip	Pinus ponderosa	Ponderosa pine	Coniferous tree
Pir	Pinus resinosa	Red pine	Coniferous tree
Pis	Pinus sylvestris	Scotch pine	Coniferous tree
Pm	Pseudotsuga menziesii	Douglasfir	Coniferous tree
Pp	Picea pungens	Colorado spruce	Coniferous tree
Pv	Prunus virginiana	Chokecherry	Deciduous tree
Px	Populus x acuminata	Lanceleaf poplar	Deciduous tree
Qa	Quercus alba	White oak	Deciduous tree

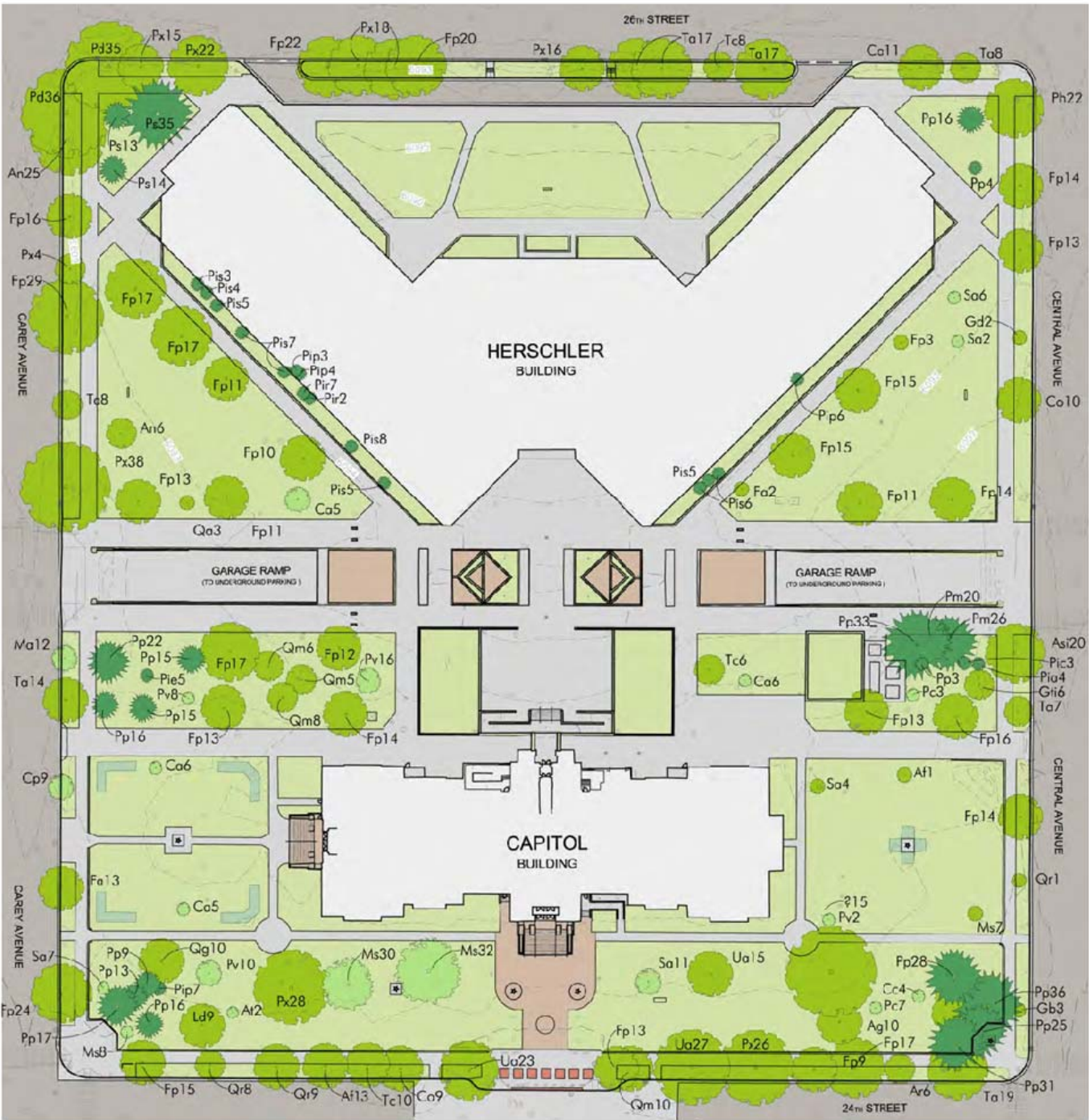


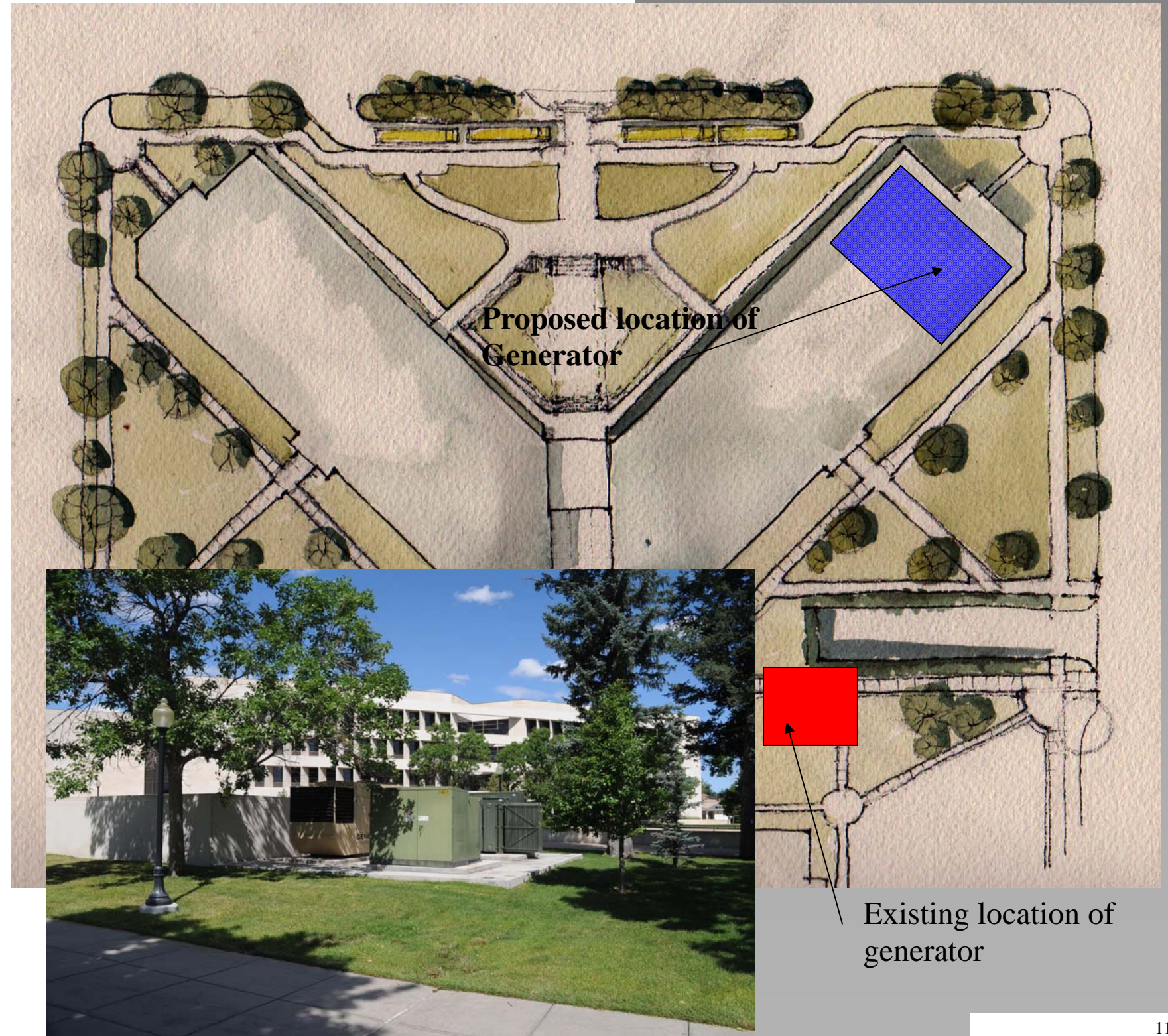
Figure 41 The 2014 existing landscape plan of the Capitol grounds shows both the Capitol and Herschler blocks. The plan highlights the changes from the 1950s; particularly to the area north of the building, Grade changes, extensive paving, and the placement of numerous trees, sculpture, and other objects dominate the character of the existing landscape. (Heritage Landscapes)

Generator Location

The generator and enclosure for transformer and associated switch gear located in the East Lawn area should be removed and placed in a more appropriate location. Fuel storage for the generator should also be located out of areas of major visual impact on the site.

Fuel storage is currently planned below grade in the lawn area adjacent to the Herschler Building. The generator and some associated electrical gear are planned to be located above the site on top of the north end of the East wing of the Herschler Building.

Design Guideline: The generator and associated electrical equipment should be located away from major pedestrian, vehicular and vista corridors on the site.



Existing Cooling Tower

The existing cooling tower location is not appropriate. Moisture from the cooling tower has had a noticeable impact on the stone of the East façade of the Capitol.

Noise and mist are also very intrusive on the Capitol grounds. During certain months and weather conditions the Capitol appears shrouded in fog due to the function of the cooling Tower in the present location.

The cooling tower requirements will increase with the combined capacity of the new Central Utility Plant (CUP).



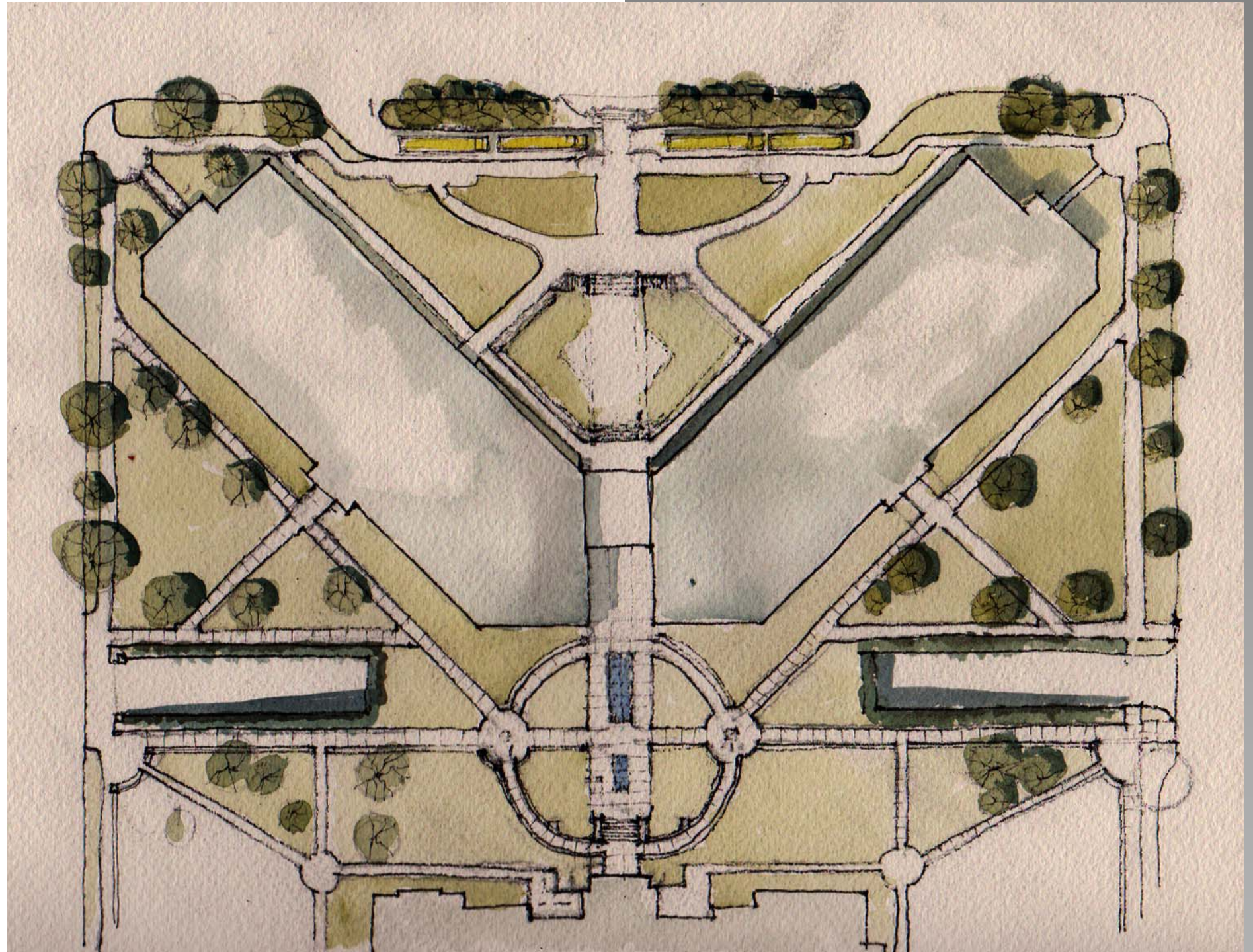
Design Guideline: The cooling tower function for the new CUP should be located where it does not damage the Capitol with moisture and create unpleasant conditions on the Capitol Grounds.

Landscape North of the Capitol

The areas beyond the traditional South side of 24th Street and surrounding the Herschler Building should be enhanced and circulation paths created to support pedestrian and vehicle site circulation patterns.

Vehicles should not approach the Capitol on the North as presently configured. The large paved areas should be returned to landscape to enhance the beauty of the Capitol and provide additional security for the building. Vehicle circulation on the site should be restricted to the ramps that align with 24th Street and the Bus pull in at 25th Street.

Design Guideline: The North Landscape area surrounding the Herschler Building should compliment the Capitol Site design. The area North of the Herschler Building should be enhanced and accommodate the requirements of the Visitor Center below grade.



Perimeter Wall

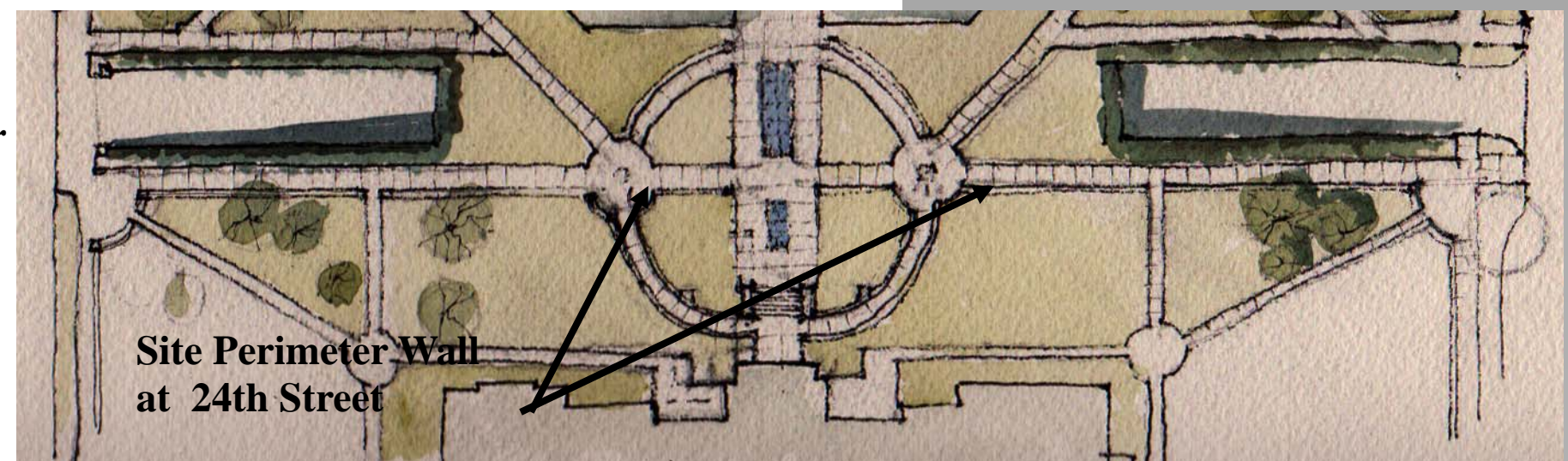
An existing low concrete wall separates the perimeter walkways adjacent to the surrounding streets from the landscape of the Capitol grounds. This slight change in grade provides a platform for the Capitol Grounds in a very subtle yet effective manner. Elevated blocks at corners and intersections also add to the character of the perimeter wall around the site.

The condition of the wall is very poor and should be replaced in its entirety.

The extension of the wall along the 24th Street edge was removed with the construction of the North Parking Lot and the Herschler Building. The wall should be restored as part of the landscape between the Herschler Building and the Capitol.



Design Guideline: The historic site perimeter wall concept should be preserved in the new landscape design. The North wall along the historic alignment of 24th Street should be restored.

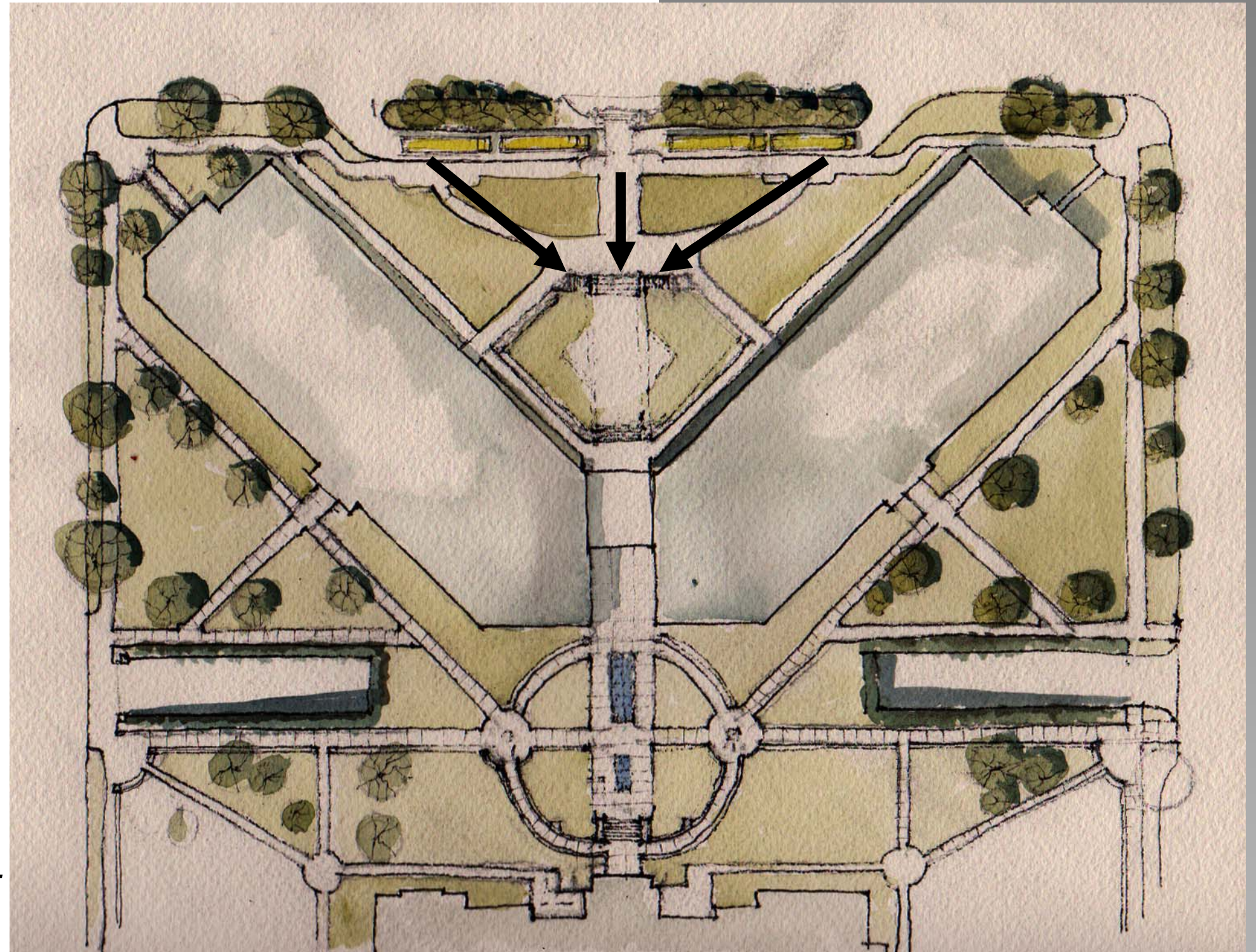


Bus Drop Off

School Bus drop off areas should provide an environment that is safe for students and provides a relatively direct path to the Visitor Information and Learning Center located in the Capitol Extension below the Herschler Building and Plaza.

Tour Bus drop off should occur in the same location. Circulation into the site from 25th Street should be restricted for this purpose. A loading zone for automobiles and ADA drop off should also be located in this area. Parking at this area should be removed to accommodate these safe loading and unloading zones.

Design Guideline: Accommodation should be made for tour and school bus drop off and waiting. Drop off should occur North of the Herschler to provide direct entry into the Visitor Services portion of the Connector.



Monuments and Sculpture

Commemorative monuments and sculpture are often present on State Capitol Grounds throughout the country. Often these monuments change location over time and new elements are added. The Wyoming State Capitol Grounds are no exception and many of the elements on the grounds are not in the original location. Historic locations for many of the existing monuments and sculpture have been documented in the “Landscape Heritage and History Report” prepared by Heritage Landscapes LLC in October 2014.

Provisions for adding sculpture and commemorative monuments in the future should also be part of the site design in the present restoration.

\
It is recommended that elements that can be moved off site during construction be returned and properly placed. Coordination with The Interpretive Plan is also recommended.

Design Guideline: Location of sculpture and other monuments should be carefully planned and accommodation made for possible future monuments.

