



MOCA

Wyoming State Capitol Oversight Group

January 5, 2016



Meeting Agenda



Capitol Rotunda



Update on Capitol Design



Update on Herschler Design



Interpretative Plan Funding



Meeting Schedule

Update on Capitol



Capitol Rotunda



Historic Wall Analysis – Lighting Option – Chamber Desk Layout



Arched Entry into the Chamber Lobbies



Capitol Extension

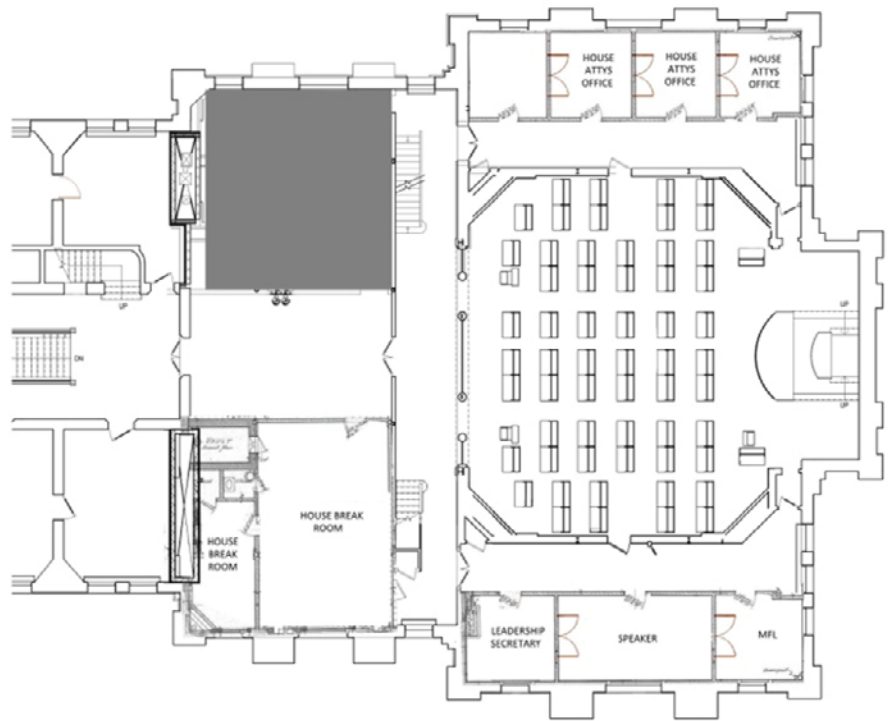


Handrails and Guardrails

Second Floor East Wing

Recommended Wall Locations

1. Maintain as much Historic Fabric as possible
2. Maintain Historic Door Locations
3. Maintain Historic Ceiling heights
4. Use space for Office Functions
5. Reduce Costs by Keeping Historic Fabric.
6. Open up Auxiliary Light Corridors

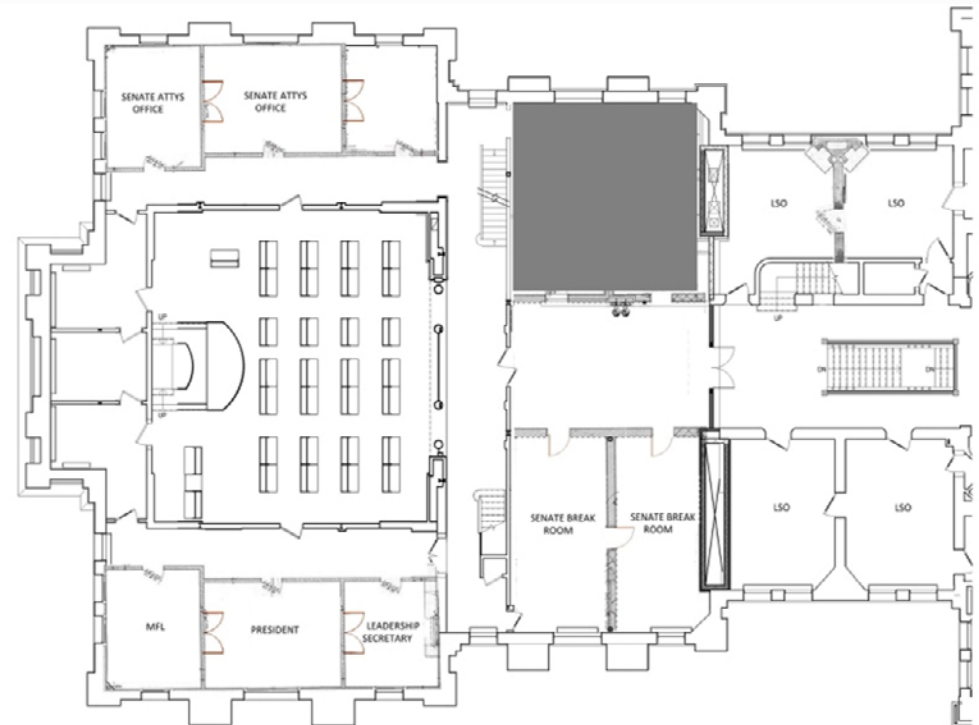


SECOND FLOOR EAST WING
SCALE 1/8"=1'-0"

Second Floor West Wing

Recommended Wall Locations

1. Maintain as much Historic Fabric as possible
2. Maintain Historic Door Locations
3. Maintain Historic Ceiling heights
4. Use space for Office Functions
5. Reduce Costs buy Keeping Historic Fabric.
6. Open up Auxiliary Light Corridors

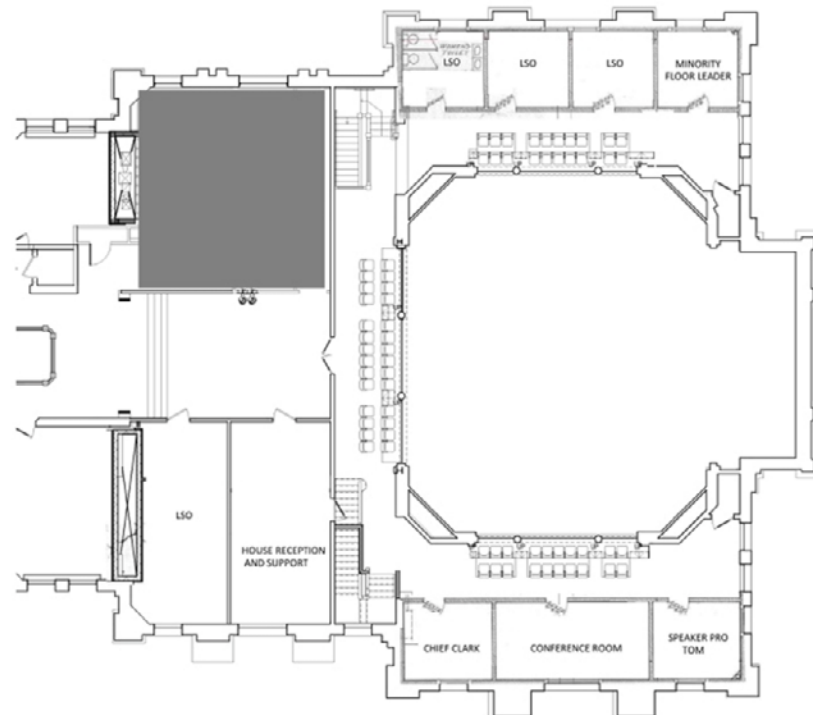


SECOND FLOOR WEST WING
SCALE: 1/8"=1'-0"

Third Floor East Wing

Recommended Wall Locations

1. Maintain as much Historic Fabric as possible
2. Maintain Historic Door Locations
3. Maintain Historic Ceiling heights
4. Use space for Office Functions
5. Reduce Costs buy Keeping Historic Fabric.
6. Open up Auxiliary Light Corridors

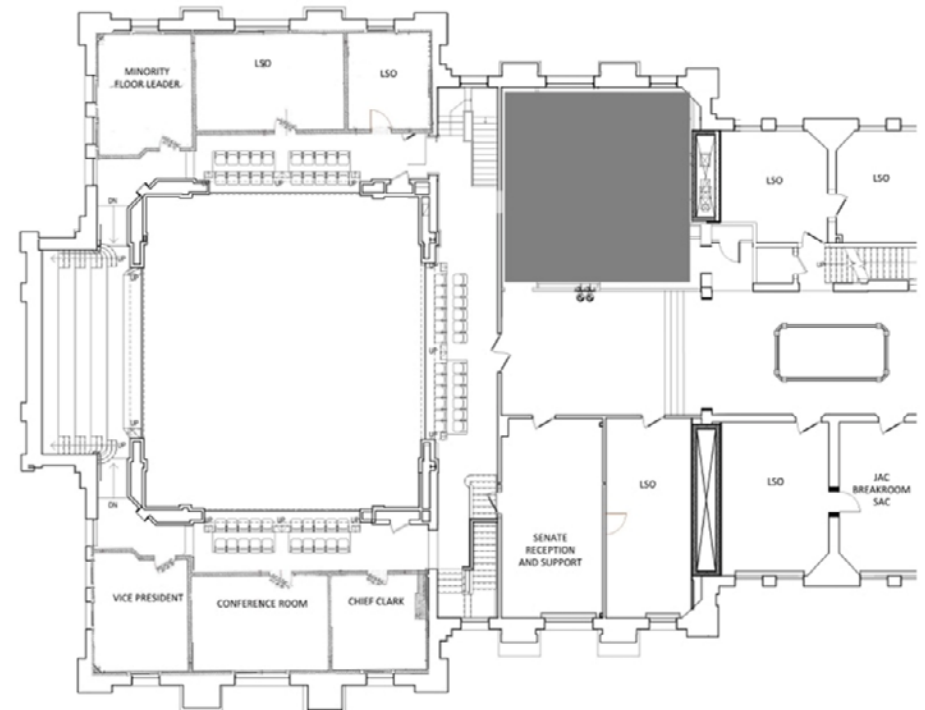


THIRD FLOOR EAST WING
SCALE 1/8"=1'-0"

Third Floor West Wing

Recommended Wall Locations

1. Maintain as much Historic Fabric as possible
2. Maintain Historic Door Locations
3. Maintain Historic Ceiling heights
4. Use space for Office Functions
5. Reduce Costs by Keeping Historic Fabric.
6. Open up Auxiliary Light Corridors



THIRD FLOOR WEST WING
SCALE 1/8"=1'-0"

Capitol Lighting

Guideline Elements

- Lighting on Interior perimeter offices is important to how the exterior of the Building is viewed and expressed (Exterior is Zone 1)
- Landscape design provide for a walk very close to the capitol.
- Guidelines – Capitol Lighting number 31 – Historic light fixtures should be restored and maintained,
 - New lighting should be compatible,
 - Lighting level throughout the building should be evaluated for current use and code compliance.
- Augmentation of Chamber Skylight with artificial light only when it is required.

Capitol Lighting

Recommendations

- Treat all exterior offices and spaces with Lighting that is supportive of Exterior as Zone 1 Space.
- Provide Lighting in Offices primarily from historically compatible fixtures and task lighting at desks.
- Lighting levels throughout the building should be evaluated for use and code compliance.
- Augmentation of Chamber Skylight
 1. TV Level – Provide for Broadcast
 2. Working level – For Session or when Meeting
 3. Out of Session level – Viewing by the Public
 4. Out of Session and building is closed

Chamber Desk Location

1. Desk Location Impacts the distribution of phone, data and power routing
2. Current Walker Duct (electrical distribution floor system) is in good shape
3. Current Duct location is design to support the Desk Layout as used in 2015
4. Cost saving would exist by using the existing Walker Duct System.

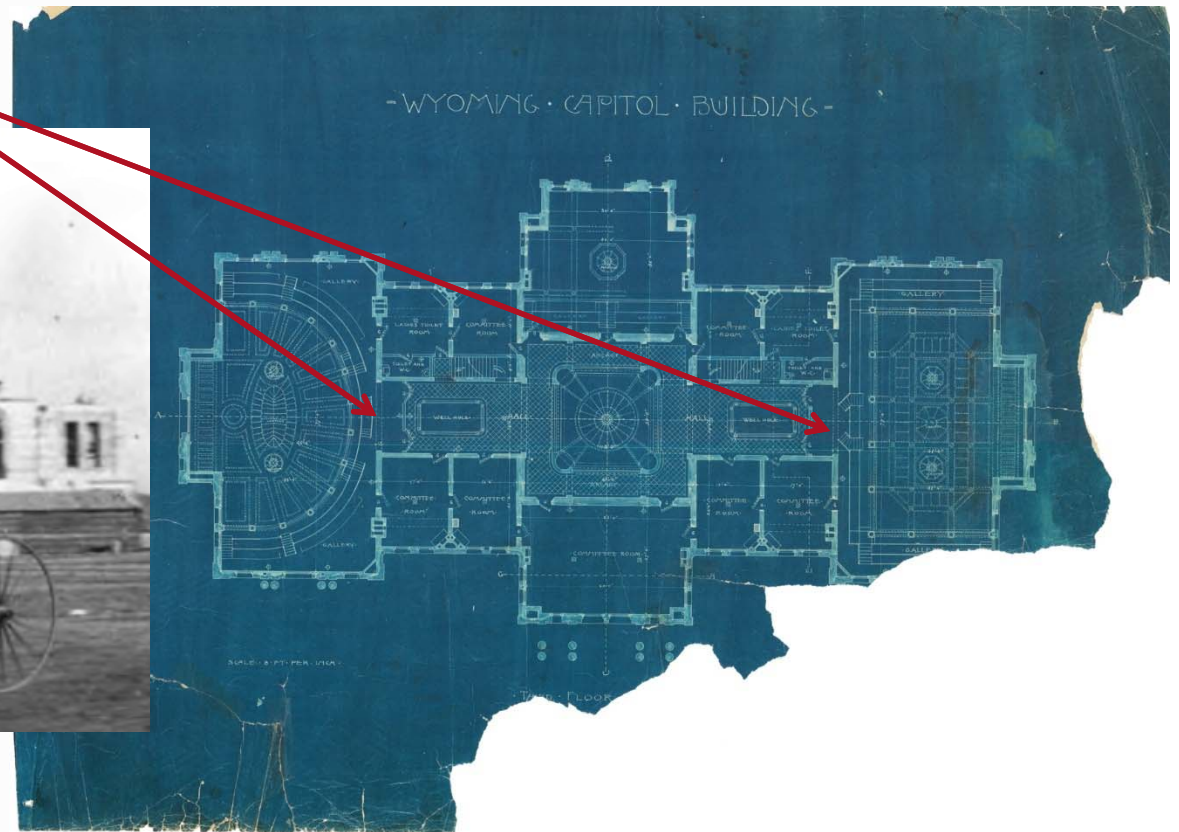
Recommendation

Maintain the 2015 Chamber Desk Layout with the following adjustments

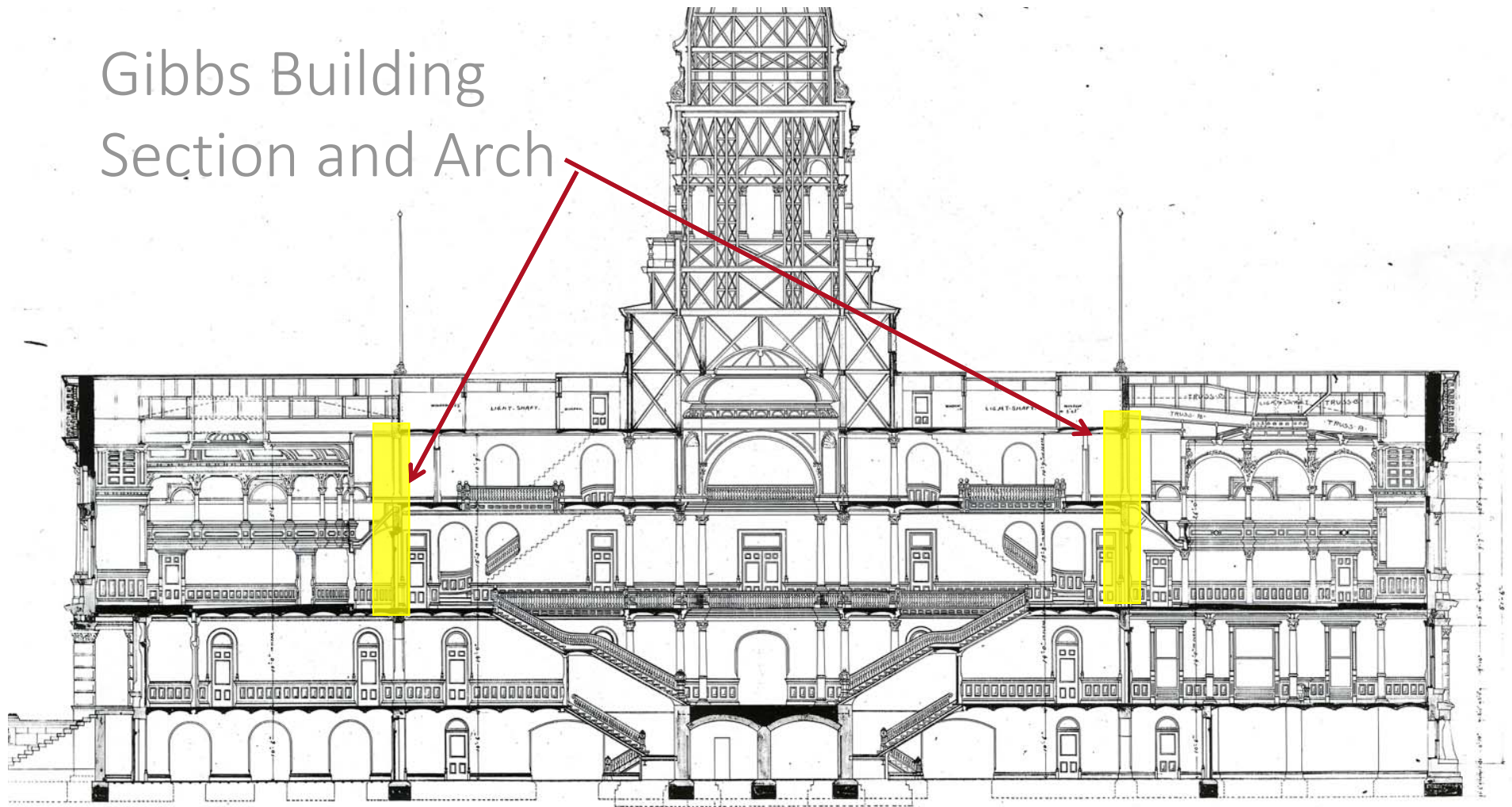
- Adjust the two that are perpendicular to body of desks in each Chamber
- Reuse the existing Walker Duct System.

Third Floor Arch Entry to Chamber Gallery

- Third Floor Gibbs Arch



Gibbs Building Section and Arch



SCALE - 8 FEET PER INCH

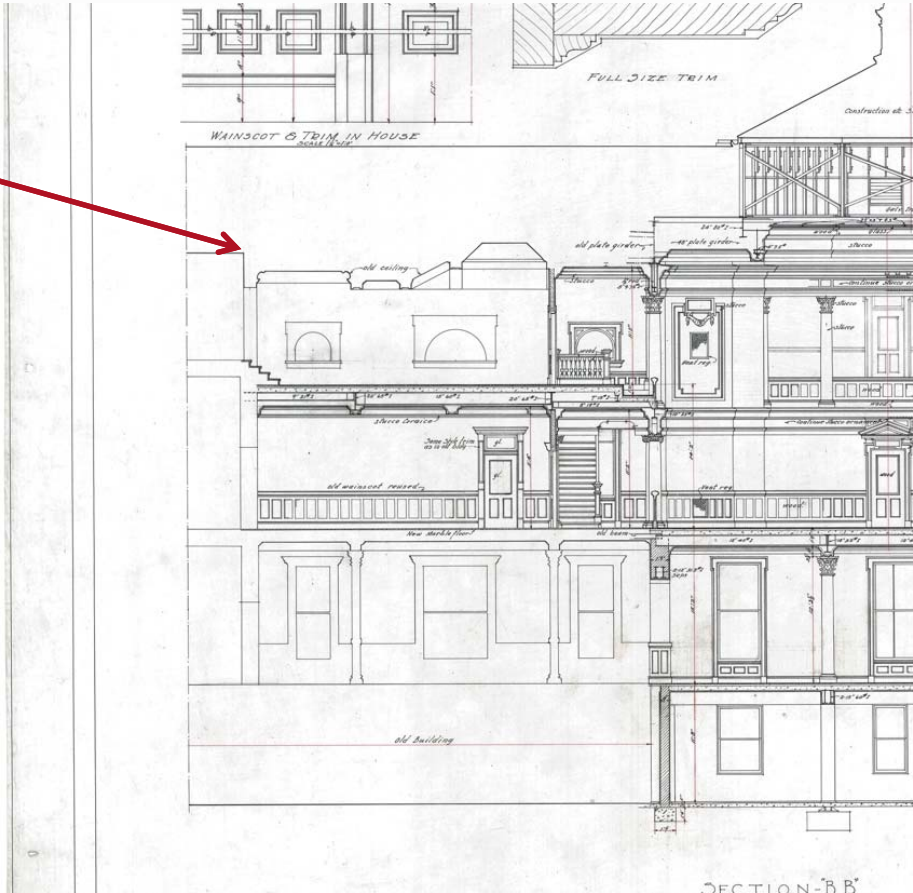
D. W. GIBBS & CO. ARCHTS. TOLEDO, O.

DuBois Wall Section and Arch

- DuBois Wall Section and Arch

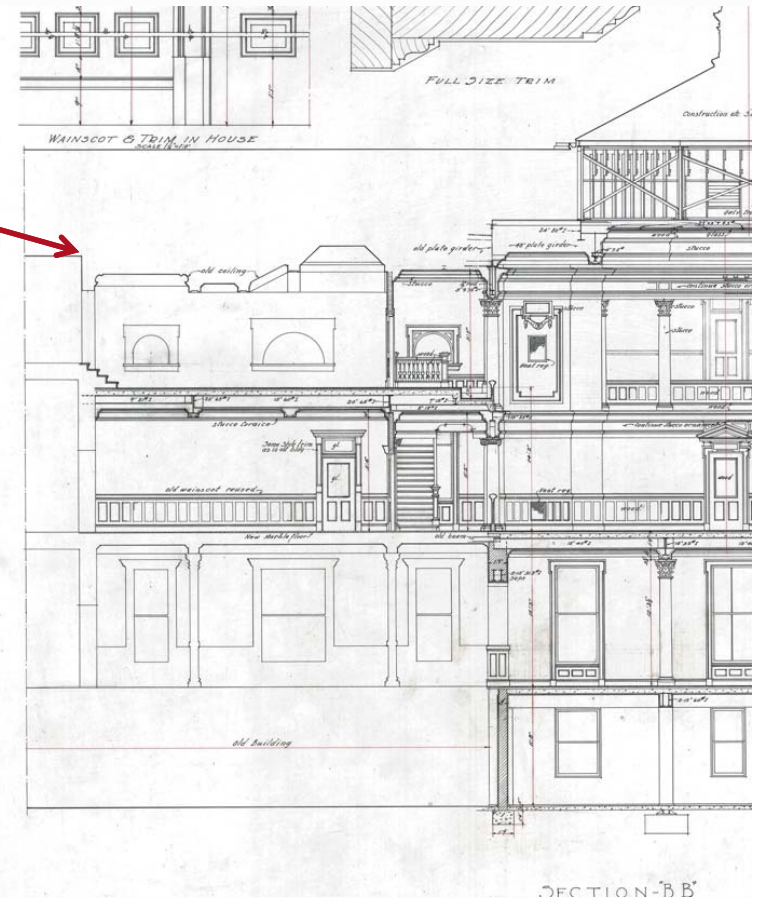
Recommendation

- Create a rectangular opening instead of an arched opening due to height of existing arch.
- Create a open entry without doors into the House and Senate 3rd floor gallery Lobbies



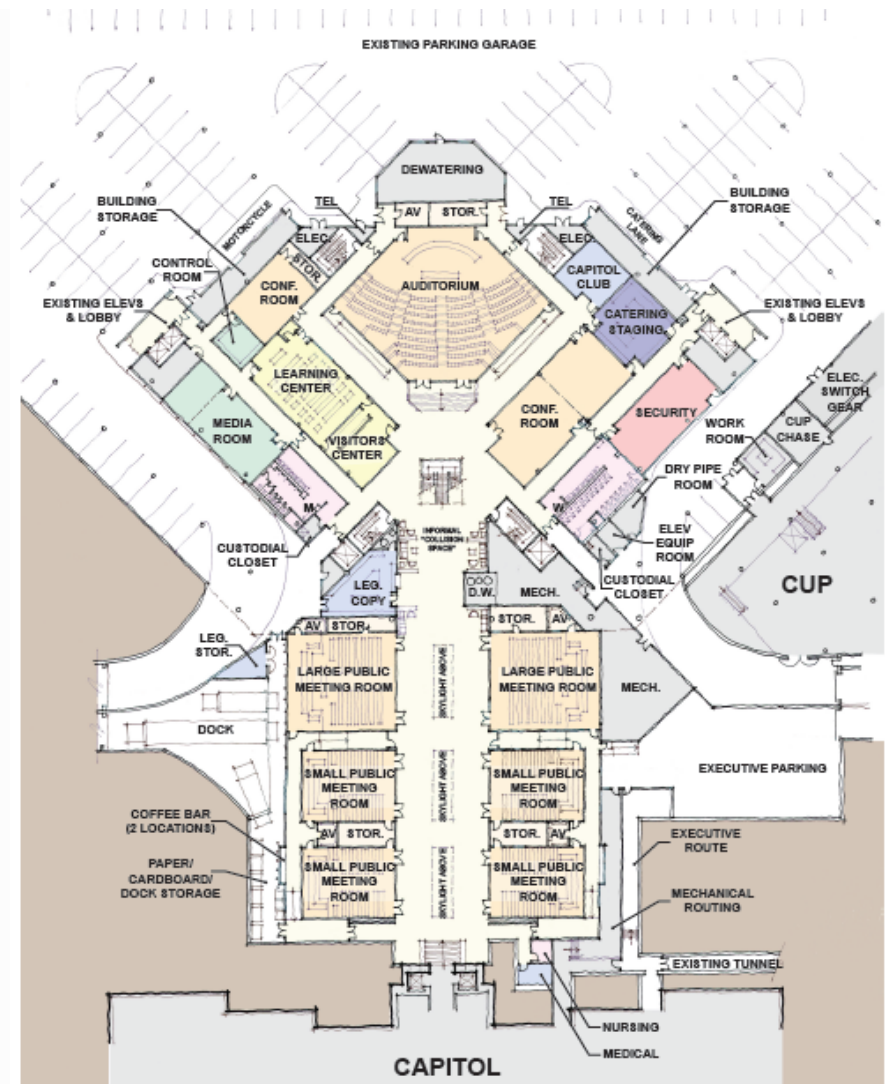
- ## Recommendation

1. Create a rectangular opening instead of an arched opening due to height of existing arch.
2. Create a open entry without doors into the House and Senate 3rd floor gallery Lobbies



Capitol Extension

- Full Program is accounted for:
 - 6 Committee Rooms
 - LSO Copy
 - Conference Center
 - Auditorium
 - Visitor Center
 - Leaning Center
- Security for Executive Protection and Command and Control in Extension, remaining located above.
- Full Fixture Count in Restrooms



Handrails and Guardrails

Recommendation

- Provide additional fall protection at Rotunda.
- Rotunda-Provide a railing mounted behind the wood railing supported by the flat wooden area below.
- Railings at Light Wells above Stair Balustrades are not changed in configuration.

Update on Herschler Design



Capitol Rotunda



Exterior Design Studies



Landscape and Site Planning Analysis

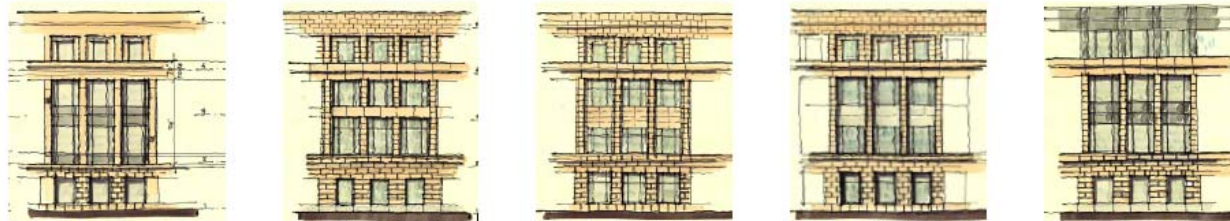


Update on Herschler Design



Meeting Schedule

Exterior Wall Study



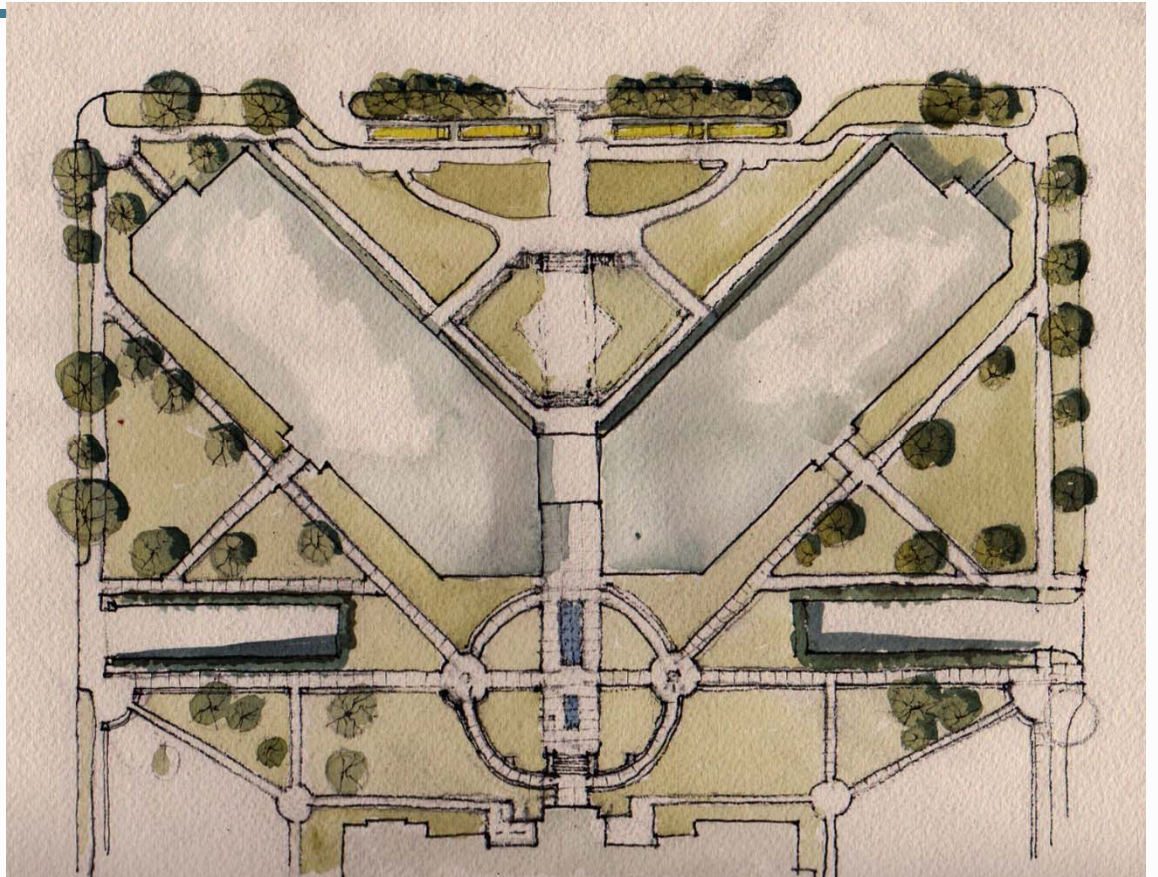
Wyoming Capitol Square Complex - Herschler Elevation Studies

December 31, 2015 ::

Cheyenne, WY

Capitol Site Plan

- Ramps and Walks for ADA Accessibility



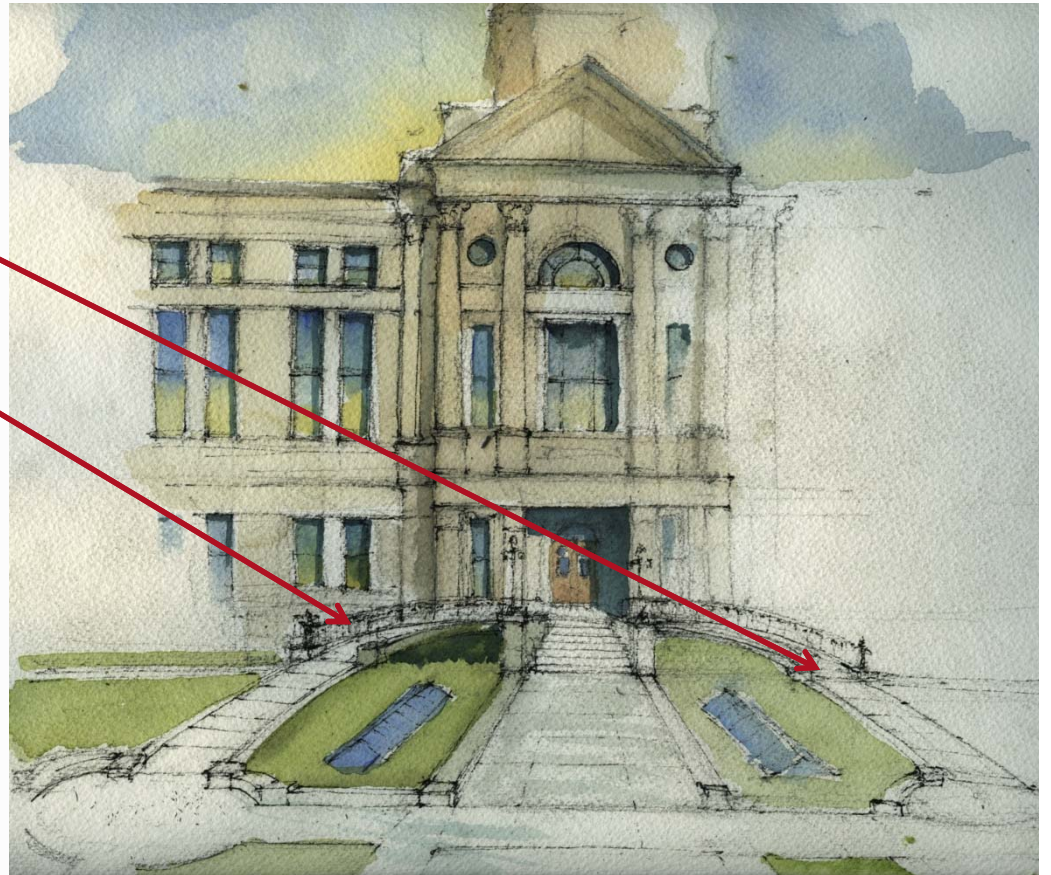
Capitol Site Plan



Capitol Site Plan

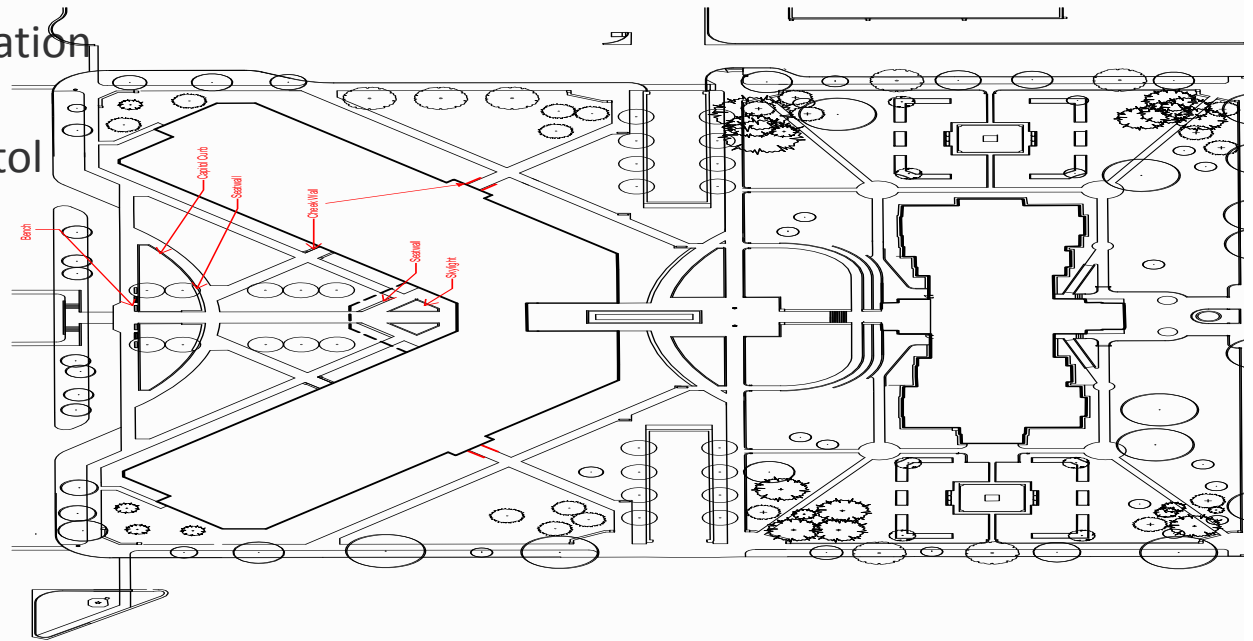
Recommendation

- Ramps and Walks for ADA Accessibility
- Railings – Guardrail and Handrail

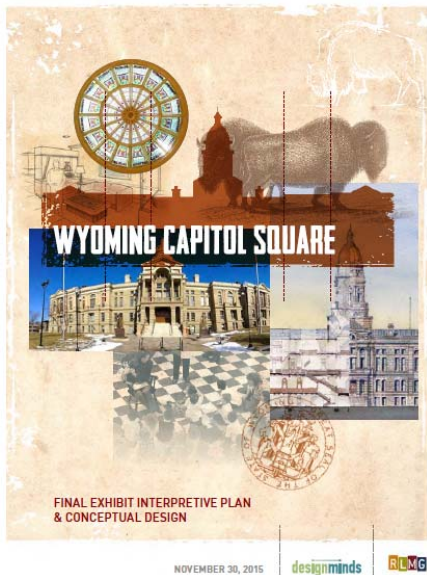


Capitol Site Plan

- Landscaping and Circulation around the Capitol
- Development of a Capitol Sculpture Plan



Funding of the Interpretative Plan



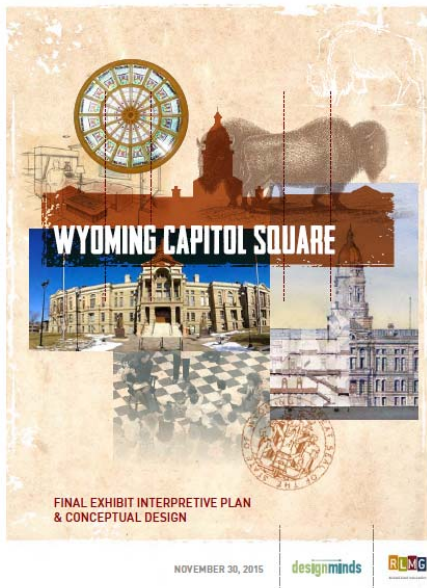
Fund Full Plan and Infrastructure



Design and Infrastructure

Interpretative Planning Document

Funding of the Full Plan



Interpretative Planning Document

Funding of the Interpretative Plan

- Base Funding, Mid Range = \$1,400,000
- Visitor Center, Mid Range = \$ 600,000
- Total Production Cost (MR) = \$2,000,000

Design Fee

- 20% Design Fee, Mid Range = \$ 400,000

Construction Infrastructure

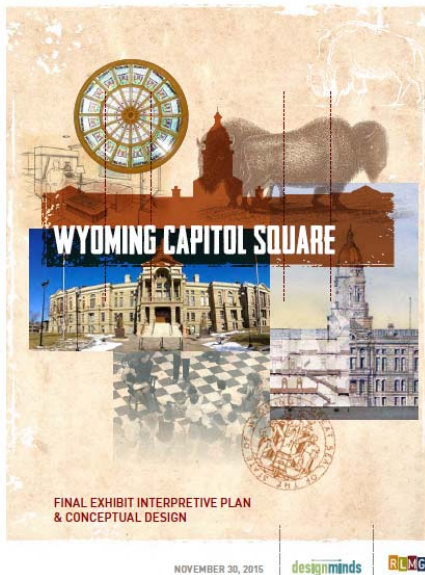
- Infrastructure, Conduit, (MR) = \$ 500,000

Contingency

- Design/Construction Contingency = \$ 200,000

Total Cost **\$3,100,000**

Funding of the Full Plan



Design Fee

- 20% Design Fee, Mid Range = \$ 400,000

Construction Infrastructure

- Infrastructure, Conduit, (MR) = \$ 500,000

Contingency

- Design/Construction Contingency = \$ 90,000

Total Cost **\$ 990,000**